

CONTENTS

About UIY	2
Main Products	4
RF Isolators	4
Coaxial Isolator.....	7
Drop in Isolator.....	8
Broadband Isolator.....	9
Dual Junction Isolator.....	12
Surface Mount Isolator.....	13
Microstrip Isolator.....	14
Waveguide Isolator.....	15
RF Circulators	4
Coaxial Circulator.....	16
Drop in Circulator.....	17
Broadband Circulator.....	18
Dual Junction Circulator.....	21
Surface Mount Circulator.....	23
Microstrip Circulator.....	24
Waveguide Circulator.....	25
RF Filters	5
Band Pass Filter.....	26
Low Pass Filter.....	33
High Pass Filter.....	34
Band Stop Filter.....	35
Attenuator/Termination/Load	5
Coaxial Termination.....	36
Coaxial Attenuator.....	39
Power Divider/Splitter	5
2 Way Power Divider.....	41
3 Way Power Divider.....	42
4 Way Power Divider.....	43
8 Way Power Divider.....	44
16 Way Power Divider.....	44
Duplexer/Triplexer	6
Duplexer.....	45
Triplexer.....	48
TX RX Combiner/Splitter	6
Tx & Rx Multicoupler.....	49
RX Splitter.....	50
Tx Combiner.....	51
Other Products	6
Hybrid Combiner.....	52
Directional Coupler.....	53
Waveguide to Coaxial Adapter.....	54
Contact UIY	56

About UIY

UIY was established in 2003 in Shenzhen, China, with the registered capital of 200 million yuan (about 32 million dollars). It is an integrated enterprise, which includes research, production, marketing and service for the civilian and military microwave communications device. The products are sold all over the world. Relying on industrial advantages and excellent professional skills, UIY won reputation and public praise in the microwave communications industry under experienced domestic and international operation mode. The frequency range DC-112GHz and average power up to 20KW, its products are widely used in civil, military, aerospace, space technology and other fields.

UIY has always been adhering to the 'Customer Oriented, Technology Leading, Integrity First, Bold Innovation' management philosophies, and believe in the 'Technical advantage is the foundation, market demand is the guidance'.

Since its establishment, UIY has been keeping in-depth cooperation and communication with renowned enterprises, institutions, scientific research institutions all over the world, laid the technical foundation for product development and research. During the constant developing and expanding period, UIY kept pursuing for more excellent enterprise quality. Steadily changing from a professional company to a diversified enterprise. Welcome partners from all over the world to cooperate with UIY, to feel the entrepreneurship strength in UIY. Wish to create a beautiful tomorrow with you together!



Manufactory



Conference Room



ENG corner



Technology Department

Culture of UIY

Paraphrase of UIY: become an industry-famous flagship with excellent technology and transmit the language of communications industry with professional attitude, to make technology serve the social development, economic construction, scientific research and military industry, and make UIY become an industrial famous brand recognized, well known and praised by the public, so that it can make more contributions for the development of global communications industry.

Enterprise Vision: Make UIY become an international reliable professional brand

Operation Philosophy: Customer Oriented, Technology Leading, Integrity first, Bold Innovation

As a high-tech enterprise, UIY always takes customer demands as the development direction. It pays attention to the technical R&D and adheres to the philosophy of integrity operation to move ahead during exploration. With the innovative attitude and pursuit of truth, it wins market position and development space for the enterprise.

Management Tenet: focus on R&D, constant innovation, self improvement and pursuit for changes, rigorousness and carefulness

UIY actively pursues for innovation, sticks to the management tenet of "self improvement and pursuit for changes, rigorousness and carefulness", and implements the management philosophy of "humanistic management, standardization and high efficiency". It always maintains the high market competitiveness and good corporate image during its pursuit for survival and development, thus winning honorable praise for its brand.

Core Values:

Position potential markets accurately with professional services;

Serve wide customers easily with advanced technologies;

Win global market with constant innovation;

Open the future of communications with successful cooperation.

Main Products

RF Isolators



[Coaxial Isolator](#)



[Drop in Isolator](#)



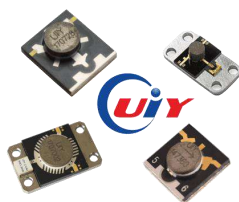
[Broadband Isolator](#)



[Dual Junction Isolator](#)



[Surface Mount Isolator](#)



[Microstrip Isolator](#)



[Waveguide Isolator](#)

RF Circulators



[Coaxial Circulator](#)



[Drop in Circulator](#)



[Broadband Circulator](#)



[Dual Junction Circulator](#)



[Surface Mount Circulator](#)



[Microstrip Circulator](#)



[Waveguide Circulator](#)

RF Filters



[Band Pass Filter](#)



[Low Pass Filter](#)



[High Pass Filter](#)



[Band Stop Filter](#)

Attenuator/Termination/Load



[Coaxial Termination](#)



[Coaxial Attenuator](#)

Power Divider/Splitter



[2 Way Power Divider](#)



[3 Way Power Divider](#)



[4 Way Power Divider](#)



[8 Way Power Divider](#)



[16 Way Power Divider](#)

Duplexer/Triplexer



[Duplexer](#)



[Triplexer](#)

TX RX Combiner/Splitter



[Tx & Rx Multicoupler](#)



[RX Splitter](#)



[Tx Combiner](#)

Other Products



[Hybrid Combiner](#)



[Directional Coupler](#)



[Waveguide to Coaxial Adapter](#)

Coaxial Isolator

- Can be dual junction even three for high isolation.
- Military, space and commercial applications.
- Custom design available upon request.
- Guaranteed for one year standard.



Low frequency from 10MHz to 1875MHz, FM, VHF, UHF, etc

Model No.	Freq.Range (MHz)	BW Max.	IL. (dB)	Isolation (dB)	VSWR	Forward Power(W)	Reverse Power(W)	Connector Type	Temp. (°C)	Dimension LxWxH(mm)
UIYCI8080A	10~55	20%	1.2	20	1.25	50	50	N, SMA	+10~+60	80x80x28
UIYCI6060A	45~270	40%	0.5	25	1.15	200	50	N, SMA	-30~+70	60x60x28
UIYCI6075A	45~270	40%	0.5	25	1.15	200	100	N, SMA	-30~+70	60x75x28
UIYCI80140B	60~200	20%	0.3	23	1.2	500	250	N	0~+70	80x140x18
UIYCI100166A	70~130	20%	0.5	20	1.25	500	250	N	0~+70	100x160x40
UIYCI5656A	130~900	40%	0.3	23	1.2	300	30	N,SMA	-30~+70	56x56x15
UIYCI5663A	130~900	40%	0.3	23	1.2	300	100	N,SMA	-30~+70	56x63.5x15
UIYCI3538A	200~1875	40%	0.3	35	1.15	300	30	N, SMA	-40~+85	35x38x15
UIYCI3556A	200~1875	40%	0.3	35	1.15	300	100	N, SMA	-40~+85	35x56x15
UIYBCI6060F	225~400	Full	0.8	18	1.3	160	50	N, SMA	0~60	60x60x28
			1.0	16	1.4				-40~+85	
UIYBCI6075F	225~400	Full	0.8	18	1.3	160	100	N, SMA	0~60	60x75x28
			1.0	16	1.4				-40~+85	
UIYCI4550A	250~1500	30%	0.3	23	1.15	300	30	N, SMA	-30~+70	45x50x24
UIYCI4580A	250~1500	30%	0.3	23	1.15	300	250	N, SMA	-30~+70	45x80x24
UIYBCI6060H	300~475	Full	0.8	18	1.3	100	50	N, SMA	25±5	60x60x28
			1.0	17	1.35				-40~+85	
UIYCI5356A	300~1500	18%	0.3	23	1.2	500	30	N	-40~+85	53x56x20

700MHz to 40GHz, GSM,CDMA,WCDMA,LTE,L.S.C.X band, etc

Model No.	Freq.Range (GHz)	BW Max.	IL. (dB)	Isolation (dB)	VSWR	Forward Power(W)	Reverse Power(W)	Connector Type	Temp. (°C)	Dimension LxWxH(mm)
UIYCI3434A	0.7~2.0	40%	0.25	23	1.15	200	30	N, SMA	-40~+85	34x34x22
UIYCI3232A	0.7~2.5	35%	0.3	23	1.15	200	30	N, SMA	-40~+85	32x32x18
UIYCI2528A	0.7~5.0	30%	0.3	23	1.15	200	30	N, SMA	-40~+85	25.4x28.5x15
UIYCI2538A	0.7~5.0	30%	0.3	23	1.15	200	100	N, SMA	-40~+85	25.4x38.5x15
UIYCI1522A	4.4~7.2	25%	0.3	23	1.2	60	5	N, SMA	-40~+85	15x22.5x13.8
UIYCI2536A	4.0~8.0	20%	0.3	23	1.2	300	100	N	-20~+70	25x36x18
UIYCI1318A	6.0~27.5	75%	0.3	23	1.2	60	5	SMA, 2.92mm	-55~+85	13x18x13.8
UIYBCI1025A	18.0~26.5	Full	0.7	20	1.3	10	2	2.92mm	-55~+85	10.2x25.6x12.5
	23.0~28.0	Full	0.9	20	1.3	10	2	2.92mm	-55~+85	10.2x25.6x12.5
UIYBCI1326A	26.5~40.0	Full	1.2	15	1.5	10	2	2.92mm	-55~+85	13x26x16.6

Drop in Isolator

- Frequency Range 10MHz to 40GHz, up to 2000W power.
- Military, space and commercial applications.
- Low insertion Loss, High Isolation, High power handling.
- Custom design available upon request.



Low frequency from 10MHz to 3600MHz, FM, VHF, UHF, etc

Model No.	Freq.Range (MHz)	BW Max.	IL. (dB)	Isolation (dB)	VSWR	Forward Power(W)	Reverse Power(W)	Connector Type	Temp. (°C)	Dimension LxWxH(mm)
UIYDI8080A	10~55	20%	1.2	20	1.25	50	50	TAB	+10~+60	80x80x28
UIYDI6060A	45~270	40%	0.5	25	1.15	200	50	TAB	-20~+65	60x60x28
UIYDI6075A	45~270	40%	0.5	25	1.15	200	100	TAB	-20~+65	60x75x28
UIYDI80140B	60~200	20%	0.3	23	1.2	500	250	TAB	0~+70	80x140x18
UIYDI100166A	70~130	20%	0.5	20	1.25	500	250	TAB	0~+70	100x160x40
UIYDI5656A	130~900	40%	0.3	23	1.2	300	30	TAB	-30~+70	56x56x15
UIYDI5663A	130~900	40%	0.3	23	1.2	300	100	TAB	-30~+70	56x63.5x15
UIYDI3538A	200~1875	40%	0.3	30	1.15	300	30	TAB	-40~+85	35x38x11
UIYDI3546A	200~1875	40%	0.3	30	1.15	300	100	TAB	-40~+85	35x46x11
UIYDI2525A	200~3600	30%	0.2	25	1.15	200	30	TAB	-40~+85	25.4x25.4x10.5
UIYDI2531A	200~3600	30%	0.2	25	1.15	200	100	TAB	-40~+85	25.4x31.7x10.5
UIYBDI6060F	225~400	Full	0.8	18	1.3	160	50	TAB	0~60	60x60x28
			1.0	16	1.4				-40~+85	
UIYBDI6075F	225~400	Full	0.8	18	1.3	160	100	TAB	0~60	60x75x28
			1.0	16	1.4				-40~+85	
UIYDI4242A	250~1300	35%	0.25	25	1.15	300	30	TAB	-30~+70	42x42x13
UIYDI4249A	250~1300	35%	0.25	25	1.15	300	100	TAB	-30~+70	42x49x13
UIYBDI6060H	300~475	Full	0.8	18	1.3	100	50	TAB	25±5	60x60x28
			1.0	17	1.35				-40~+85	
UIYDI5356A	300~1500	18%	0.3	23	1.2	500	30	TAB	-40~+85	53x56x20

450MHz to 40GHz, GSM,CDMA,WCDMA,LTE,L.S.C.X band, etc

Model No.	Freq.Range (GHz)	BW Max.	IL. (dB)	Isolation (dB)	VSWR	Forward Power(W)	Reverse Power(W)	Connector Type	Temp. (°C)	Dimension LxWxH(mm)
UIYDI2020A	0.4~3.0	30%	0.25	25	1.15	100	30	TAB	-40~+85	20x20x10.6
UIYDI2027A	0.4~3.0	30%	0.25	25	1.15	100	100	TAB	-40~+85	20x27x10.6
UIYDI1919A	0.6~5.0	30%	0.25	25	1.15	100	30	TAB	-40~+85	19x19x8.6
UIYDI1925A	0.6~5.0	30%	0.25	25	1.15	100	100	TAB	-40~+85	19x25.4x8.6
UIYDI3232A	0.7~3.1	30%	0.3	23	1.15	200	30	TAB	-40~+85	32x32x11
UIYDI1212B	0.7~10.0	30%	0.3	23	1.2	60	20	TAB	-40~+85	12.7x12.7x8
UIYDI1220A	4.0~8.0	25%	0.25	23	1.2	60	5	TAB	-40~+85	12x20x8
UIYDI815A	5.0~25.0	40%	0.3	23	1.2	65	5	TAB	-55~+85	8.9x15x7.8
UIYDI1318A	17.0~27.5	20%	0.5	20	1.25	30	5	TAB	-40~+85	13x18x13.8
UIYBDI1025A	18.0~26.5	Full	0.7	20	1.3	10	2	TAB	-55~+85	10.2x25.6x12.5
	23.0~28.0	Full	0.9	20	1.3	10	2	TAB	-55~+85	10.2x25.6x12.5
UIYBDI1326A	26.5~40.0	Full	1.2	15	1.5	10	2	TAB	-55~+85	13x26x16.6

Broadband Isolator

- Frequency range 56MHz to 40GHz, up to 2000W power.
- Military, space and commercial applications.
- Low insertion loss, high isolation, high power handling.
- Custom design available upon request.



Coaxial type from 56MHz to 40GHz

Model No.	Freq.Range (MHz)	BW Max.	IL. (dB)	Isolation (dB)	VSWR	Forward Power(W)	Reverse Power(W)	Connector Type	Temp. (°C)	Dimension LxWxH(mm)
UIYBCI6060E	56~86	Full	1.5	16	1.4	60	30	N, SMA	-10~+60	60x60x28
UIYBCI6060A	68~88	Full	1.3	18	1.3	100	30	N, SMA	-10~+65	60x60x28
UIYBCI6060B	88~108	Full	0.65	20	1.25	100	30	N, SMA	-20~+70	60x60x28
UIYBCI6060C	130~180	Full	0.8	18	1.3	100	30	N, SMA	-20~+70	60x60x28
UIYBCI6060D	136~174	Full	0.65	20	1.25	100	30	N, SMA	-20~+70	60x60x28
UIYBCI6060F	225~400	Full	0.8	18	1.3	160	50	N, SMA	0~60	60x60x28
			1.0	16	1.4				-40~+85	
UIYBCI6075F	225~400	Full	0.8	18	1.3	160	100	N, SMA	0~60	60x75x28
			1.0	16	1.4				-40~+85	
UIYBCI6060H	300~475	Full	0.8	18	1.3	100	50	N, SMA	25±5	60x60x28
			1.0	17	1.35				-40~+85	
UIYBCI3538A	380~460	Full	0.5	18	1.3	300	30	N, SMA	-30~+70	35x38x15
UIYBCI3538B	400~470	Full	0.5	20	1.25	300	30	N, SMA	-30~+70	35x38x15
UIYBCI3538C	600~800	Full	0.5	18	1.3	300	30	N, SMA	-30~+70	35x38x15
UIYBCI6060G	600~900	Full	0.5	16	1.4	300	30	N, SMA	-30~+75	60x60x26
UIYBCI3434B	700~900	Full	0.4	18	1.3	200	30	N, SMA	-30~+70	34x34x22
UIYBCI3434A	800~1000	Full	0.4	20	1.25	200	30	N, SMA	-30~+70	34x34x22
UIYBCI3434D	950~1415	Full	0.6	18	1.3	200	30	N, SMA	0~+60	34x34x22
UIYBCI4550A	950~1450	Full	0.6	16	1.4	200	30	N, SMA	-30~+70	45x50x24
UIYBCI3232A	960~1215	Full	0.4	20	1.25	200	30	N, SMA	-30~+70	32x32x18
UIYBCI3434F	1225~1875	Full	0.6	16	1.4	200	30	N, SMA	0~+60	34x34x22
Model No.	Freq.Range (GHz)	BW Max.	IL. (dB)	Isolation (dB)	VSWR	Forward Power(W)	Reverse Power(W)	Connector Type	Temp. (°C)	Dimension LxWxH(mm)
UIYBCI7272A	0.8~2.0	Full	1.3	12	1.6	300	30	N, SMA	+10~+70	72x72x27.4
UIYBCI6466A	1.0~2.0	Full	0.6	17	1.4	100	30	N, SMA	+10~+70	64x66x26
UIYBCI14272A	1.0~2.0	Full	1.4	34	1.35	300	30	N, SMA	+10~+70	142x72x27.4
UIYBCI3434G	1.0~1.3	Full	0.4	20	1.25	200	30	N, SMA	-30~+70	34x34x22
UIYBCI3434C	1.0~1.5	Full	0.6	16	1.4	200	30	N, SMA	0~+65	34x34x22
UIYBCI5049A	1.35~2.7	Full	0.5	18	1.3	100	30	N, SMA	0~+70	50.8x49.5x19
UIYBCI10149A	1.35~2.7	Full	1.0	36	1.3	100	30	N, SMA	0~+70	101.6x49.5x19

Model No.	Freq.Range (GHz)	BW Max.	IL (dB)	Isolation (dB)	VSWR	Forward Power(W)	Reverse Power(W)	Connector Type	Temp. (°C)	Dimension LxWxH(mm)
UIYBCI5049B	1.5~3.0	Full	0.5	17	1.35	100	30	N, SMA	0~+70	50.8x49.5x19
UIYBCI10149B	1.5~3.0	Full	1.0	34	1.35	100	30	N, SMA	0~+70	101.6x49.5x19
UIYBCI3232B	1.6~2.0	Full	0.5	18	1.3	200	30	N, SMA	-20~+65	32x32x18
UIYBCI3232C	1.7~2.2	Full	0.6	18	1.3	200	30	N, SMA	-30~+70	32x32x18
UIYBCI4040A	1.7~3.5	Full	0.7	17	1.4	100	30	N, SMA	0~+70	40x40x20
UIYBCI3232D	1.8~2.4	Full	0.5	18	1.3	200	30	N, SMA	-30~+70	32x32x18
UIYBCI4040B	1.85~3.8	Full	0.7	17	1.35	100	30	N, SMA	0~+70	40x40x20
UIYBCI3234A	2.0~4.0	Full	0.6	18	1.3	100	30	N, SMA	+10~+70	32x34x21
UIYBCI6434A	2.0~4.0	Full	1.2	36	1.3	100	30	N, SMA	+10~+70	64x34x21
UIYBCI3038A	2.0~6.0	Full	0.8	13	1.5	100	100	N, SMA	-40~+70	30.5x38.5x15
UIYBCI6236B	2.0~8.0	Full	1.8	14	1.6	100	20	SMA	+10~+70	62x36.6x19.4
UIYBCI2528A	3.0~6.0	Full	0.5	18	1.3	100	30	N, SMA	-55~+85	25.4x28x14
UIYBCI5028A	3.0~6.0	Full	1.0	36	1.3	100	30	N, SMA	-55~+85	50.8x28x14
UIYBCI2528B	3.5~6.5	Full	0.6	17	1.35	100	30	N, SMA	-55~+85	25.4x28x14
UIYBCI2122A	4.0~8.0	Full	0.5	18	1.3	100	20	N, SMA	-55~+85	21x22.5x15
UIYBCI4222A	4.0~8.0	Full	1.0	36	1.3	100	20	N, SMA	-55~+85	42x22.5x15
UIYBCI1621A	6.0~18.0	Full	1.5	10	1.9	60	10	SMA	-30~+70	16x21.5x14
UIYBCI1318A	8.0~12.0	Full	0.5	18	1.3	60	10	SMA	-55~+85	13x18x13.8
UIYBCI2618A	8.0~12.0	Full	1.0	36	1.3	60	10	SMA	-55~+85	26x18x13.8
UIYBCI1621B	8.0~18.0	Full	0.8	16	1.45	60	10	SMA	-30~+70	16x21.5x14
UIYBCI1318B	12.0~18.0	Full	0.5	18	1.3	60	10	SMA	-55~+85	13x18x13.8
UIYBCI2618B	12.0~18.0	Full	1.0	36	1.3	60	10	SMA	-55~+85	26x18x13.8
UIYBCI1025A	18.0~26.5	Full	0.7	20	1.3	10	2	2.92mm	-40~+70	10.2x25.6x12.5
	23.0~28.0	Full	0.9	20	1.3	10	2	2.92mm	-40~+70	10.2x25.6x12.5
UIYBCI1326A	26.5~40.0	Full	1.2	15	1.5	10	2	2.92mm	-55~+85	13x26x16.6
Drop in type from 56MHz to 40GHz										
Model No.	Freq.Range (MHz)	BW Max.	IL (dB)	Isolation (dB)	VSWR	Forward Power(W)	Reverse Power(W)	Connector Type	Temp. (°C)	Dimension LxWxH(mm)
UIYBDI6060E	56~86	Full	1.5	16	1.4	60	30	TAB	+10~+60	60x60x28
UIYBDI6060A	68~88	Full	1.3	18	1.3	100	30	TAB	-10~+65	60x60x28
UIYBDI6060B	88~108	Full	0.65	20	1.25	100	30	TAB	-20~+70	60x60x28
UIYBDI6060C	130~180	Full	0.8	18	1.3	100	30	TAB	-20~+70	60x60x28
UIYBDI6060D	136~174	Full	0.65	20	1.25	100	30	TAB	-20~+70	60x60x28
UIYBDI6060F	225~400	Full	0.8	18	1.3	160	50	TAB	0~60	60x60x28
			1.0	16	1.4				-40~+85	
UIYBDI6075F	225~400	Full	0.8	18	1.3	160	100	TAB	0~60	60x75x28
			1.0	16	1.4				-40~+85	
UIYBDI6060H	300~475	Full	0.8	18	1.3	100	50	TAB	25±5	60x60x28
			1.0	17	1.35				-40~+85	

Model No.	Freq.Range (MHz)	BW Max.	IL (dB)	Isolation (dB)	VSWR	Forward Power(W)	Reverse Power(W)	Connector Type	Temp. (°C)	Dimension LxWxH(mm)
UIYBDI3538A	380~460	Full	0.5	18	1.3	300	30	TAB	-30~+70	35x38x11
UIYBDI3538B	400~470	Full	0.5	20	1.25	300	30	TAB	-30~+70	35x38x11
UIYBDI3538C	600~800	Full	0.5	18	1.3	300	30	TAB	-30~+70	35x38x11
UIYBDI3232A	700~900	Full	0.5	20	1.2	250	30	TAB	-30~+70	32x32x11
UIYBDI2525A	800~1000	Full	0.6	18	1.3	200	30	TAB	-30~+70	25.4x25.4x10.5
UIYBDI3538F	950~1415	Full	0.6	16	1.4	300	30	TAB	0~+70	35x38x13
UIYBDI2525B	960~1215	Full	0.5	20	1.25	200	30	TAB	-30~+70	25.4x25.4x10.5
UIYBDI3538E	1225~1875	Full	0.6	16	1.4	300	30	TAB	0~+70	35x38x13
UIYBDI7272A	0.8~2.0	Full	1.3	12	1.6	300	30	TAB	+10~+70	72x72x27.4
UIYBDI6466A	1.0~2.0	Full	0.6	17	1.4	100	30	TAB	+10~+70	64x66x26
UIYBDI14272A	1.0~2.0	Full	1.4	34	1.35	300	30	TAB	+10~+70	142x72x27.4
UIYBDI3538D	1.0~1.3	Full	0.4	20	1.25	300	30	TAB	-30~+70	35x38x11
UIYBDI5049A	1.35~2.7	Full	0.5	18	1.3	100	30	TAB	0~+70	50.8x49.5x19
UIYBDI10149A	1.35~2.7	Full	1.0	36	1.3	100	30	TAB	0~+70	101.6x49.5x19
UIYBDI5049B	1.5~3.0	Full	0.5	17	1.35	100	30	TAB	0~+70	50.8x49.5x19
UIYBDI10149B	1.5~3.0	Full	1.0	34	1.35	100	30	TAB	0~+70	101.6x49.5x19
UIYBDI4040A	1.7~3.5	Full	0.7	17	1.4	100	30	TAB	0~+70	40x40x20
UIYBDI2525C	1.8~2.0	Full	0.4	20	1.25	200	30	TAB	-30~+70	25.4x25.4x10.5
UIYBDI4040B	1.85~3.8	Full	0.7	17	1.35	100	30	TAB	0~+70	40x40x20
UIYBDI3234A	2.0~4.0	Full	0.6	18	1.3	100	30	TAB	+10~+70	32x34x21
UIYBDI6434A	2.0~4.0	Full	1.2	36	1.3	100	30	TAB	+10~+70	64x34x21
UIYBDI3038A	2.0~6.0	Full	0.8	13	1.5	100	100	TAB	-40~+70	30.5x38.5x15
UIYBDI2528A	3.0~6.0	Full	0.5	18	1.3	100	30	TAB	-55~+85	25.4x28x14
UIYBDI5028A	3.0~6.0	Full	1.0	36	1.3	100	30	TAB	-55~+85	50.8x28x14
UIYBDI2528B	3.5~6.5	Full	0.5	18	1.3	100	30	TAB	-55~+85	25.4x28x14
UIYBDI2122A	4.0~8.0	Full	0.5	18	1.3	100	20	TAB	-55~+85	21x22.5x15
UIYBDI4222A	4.0~8.0	Full	1.0	36	1.3	100	20	TAB	-55~+85	42x22.5x15
UIYBDI1621A	6.0~18.0	Full	1.5	10	1.9	60	10	TAB	-30~+70	16x21.5x14
UIYBDI815A	8.0~12.0	Full	0.5	18	1.3	30	2	TAB	-55~+85	8.9x15x7.8
UIYBDI1716A	8.0~12.0	Full	1.0	36	1.3	30	2	TAB	-55~+85	17.6x16.5x7.5
UIYBDI1621B	8.0~18.0	Full	0.8	16	1.45	60	10	TAB	-30~+70	16x21.5x14
UIYBDI815B	12.0~18.0	Full	0.6	18	1.35	30	2	TAB	-55~+85	8.9x15x7.8
UIYBDI1716B	12.0~18.0	Full	1.2	36	1.35	30	2	TAB	-55~+85	17.6x16.5x7.5
UIYBDI1025A	18.0~26.5	Full	0.7	20	1.3	10	2	TAB	-40~+70	10.2x25.6x12.5
	23.0~28.0	Full	0.9	20	1.3	10	2	TAB	-40~+70	10.2x25.6x12.5
UIYBDI1326A	26.5~40.0	Full	1.2	15	1.5	10	2	TAB	-55~+85	13x26x16.6

Dual Junction Isolator

- Frequency range 10MHz to 40GHz, up to 500W power.
- Military, space and commercial applications.
- Low insertion loss, high isolation, high power handling.
- Custom design available upon request.



Coaxial type 10MHz to 27.5GHz, FM,VHF,UHF,GSM,CDMA,WCDMA,LTE,L.S.C.X band, etc

Model No.	Freq.Range (MHz)	BW Max.	IL. (dB)	Isolation (dB)	VSWR	Forward Power(W)	Reverse Power(W)	Connector Type	Temp. (°C)	Dimension LxWxH(mm)
UIYCDI16080A	10~55	20%	2.4	40	1.25	50	50	N, SMA	+10~+60	160x80x28
UIYCDI12060A	45~270	40%	0.8	50	1.15	200	50	N, SMA	-20~+65	120x60x28
UIYCDI12075A	45~270	40%	0.8	50	1.15	200	100	N, SMA	-20~+65	120x75x28
UIYCDI11256A	130~900	40%	0.6	46	1.2	300	30	N, SMA	-30~+70	112x56x15
UIYCDI9648A	250~1300	30%	0.6	50	1.15	400	30	N, SMA	-30~+70	96x48x24
UIYCDI9678A	250~1300	30%	0.6	50	1.15	400	250	N, SMA	-30~+70	96x78x24
UIYCDI7038A	300~1300	30%	0.6	55	1.15	300	30	N, SMA	-40~+85	70x38x15
UIYCDI7048A	300~1300	30%	0.6	55	1.15	300	100	N, SMA	-40~+85	70x48.5x15
UIYCDI6834A	700~2000	40%	0.6	45	1.2	200	30	N, SMA	-40~+85	68x34x22
UIYCDI6432A	700~3500	25%	0.6	50	1.15	200	30	N, SMA	-40~+85	64x32x18
UIYCDI3928A	3500~7000	20%	0.6	45	1.2	60	5	SMA	-40~+85	39x28x15
UIYCDI2618A	6000~27500	20%	0.6	45	1.2	60	5	SMA, 2.92mm	-55~+85	26x18x12.7
UIYBCI14272A	1000~2000	Full	1.4	34	1.35	300	30	N, SMA	+10~+70	142x72x27.4
UIYBCI10149A	1350~2700	Full	1.0	36	1.3	100	30	N, SMA	0~+70	101.6x49.5x19
UIYBCI10149B	1500~3000	Full	1.0	34	1.35	100	30	N, SMA	0~+70	101.6x49.5x19
UIYBCI6434A	2000~4000	Full	1.2	36	1.3	100	30	N, SMA	+10~+70	64x34x21
UIYBCI5028A	3000~6000	Full	1.0	36	1.3	100	30	N, SMA	-55~+85	50.8x28x14
UIYBCI4222A	4000~8000	Full	1.0	36	1.3	100	20	N, SMA	-55~+85	42x22.5x15
UIYBCI2618A	8000~12000	Full	1.0	36	1.3	60	10	SMA	-55~+85	26x18x13.8
UIYBCI2618B	12000~18000	Full	1.0	36	1.3	60	10	SMA	-55~+85	26x18x13.8

Drop in type 10MHz to 20GHz, FM,VHF,UHF,GSM,CDMA,WCDMA,LTE,L.S.C.X band, etc

Model No.	Freq.Range (MHz)	BW Max.	IL. (dB)	Isolation (dB)	VSWR	Forward Power(W)	Reverse Power(W)	Connector Type	Temp. (°C)	Dimension LxWxH(mm)
UIYDDI16080A	10~55	20%	2.4	40	1.25	50	50	TAB	+10~+60	160x80x28
UIYDDI12060A	45~270	40%	0.8	50	1.15	200	50	TAB	-20~+65	120x60x28
UIYDDI12075A	45~270	40%	0.8	50	1.15	200	100	TAB	-20~+65	120x75x28
UIYDDI11256A	130~900	40%	0.6	46	1.2	300	30	TAB	-30~+70	112x56x15
UIYDDI5025A	200~3600	30%	0.4	50	1.15	200	30	TAB	-40~+85	50.8x25.4x8.6
UIYDDI5031A	200~3600	30%	0.5	50	1.15	200	100	TAB	-40~+85	50.8x31.7x8.6
UIYDDI7038A	300~1300	30%	0.6	45	1.15	300	30	TAB	-40~+85	70x38x11
UIYDDI7046A	300~1300	30%	0.6	45	1.15	300	100	TAB	-40~+85	70x46x11
UIYDDI4027A	400~3000	30%	0.5	50	1.15	100	100	TAB	-40~+85	40x27.5x8.6

Model No.	Freq.Range (MHz)	BW Max.	IL. (dB)	Isolation (dB)	VSWR	Forward Power(W)	Reverse Power(W)	Connector Type	Temp. (°C)	Dimension LxWxH(mm)
UIYDDI3819A	600~5000	30%	0.5	50	1.15	100	30	TAB	-40~+85	38x19x8.2
UIYDDI2420A	4000~7000	20%	0.6	45	1.2	60	5	TAB	-40~+85	42x20x8
UIYDDI1716A	7000~20000	20%	0.6	46	1.2	30	5	TAB	-40~+85	17.6x16.5x7.5
UIYBDI14272A	1000~2000	Full	1.4	34	1.35	300	30	TAB	+10~+70	142x72x27.4
UIYBDI10149A	1350~2700	Full	1.0	36	1.3	100	30	TAB	0~+70	101.6x49.5x19
UIYBDI10149B	1500~3000	Full	1.0	34	1.35	100	30	TAB	0~+70	101.6x49.5x19
UIYBDI6434A	2000~4000	Full	1.2	36	1.3	100	30	TAB	+10~+70	64x34x21
UIYBDI5028A	3000~6000	Full	1.0	36	1.3	100	20	TAB	-55~+85	50.8x28x14
UIYBDI4222A	4000~8000	Full	1.0	36	1.3	100	20	TAB	-55~+85	42x22.5x15
UIYBDI1716A	8000~12000	Full	1.0	36	1.3	30	2	TAB	-55~+85	17.6x16.5x7.5
UIYBDI1716B	12000~18000	Full	1.2	36	1.35	30	2	TAB	-55~+85	17.6x16.5x7.5

Surface Mount Isolator

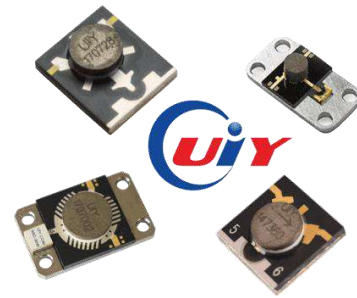
- Frequency range 200MHz to 15GHz.
- Military, space and commercial applications.
- Low insertion loss, high isolation, high power handling.
- Custom design available upon request.



Surface Mount Isolator										
Model No.	Freq.Range (GHz)	BW Max.	IL. (dB)	Isolation (dB)	VSWR	Forward Power(W)	Reverse Power(W)	Connector Type	Temp. (°C)	Dimension LxWxH(mm)
UIYSI25A	0.2~3.6	30%	0.25	25	1.15	100	10	SMT	-40~+85	Φ25.4x9
UIYSI36A	0.2~1.875	40%	0.2	30	1.15	200	10	SMT	-30~+70	Φ36x11
UIYSI20A	0.4~3.0	16%	0.25	25	1.15	60	10	SMT	-40~+85	Φ20.4x8.6
UIYSI15A	0.7~5.0	15%	0.3	23	1.2	60	10	SMT	-40~+85	Φ15.5x7
UIYSI12A	0.7~10.0	20%	0.3	23	1.2	30	10	SMT	-40~+85	Φ12.7x8
UIYSI10A	2.4~6.0	20%	0.3	21	1.2	30	10	SMT	-40~+85	Φ9.8x7

Microstrip Isolator

- Frequency Range 2.7 to 43GHz.
- Military, space and commercial applications.
- Low insertion Loss, High Isolation, High power handling.
- Custom design available upon request.



Model No.	Freq.Range (GHz)	BW Max.	IL. (dB)	Isolation (dB)	VSWR	Forward Power(W)	Reverse Power(W)	Connector Type	Temp. (°C)	Dimension LxWxH(mm)
UIYMI1416A	2.7~4.9	40%	0.4	20	1.2	15	5	Microstrip	-55~+85	14×16×5
UIYMI1212A	3.9~5.9	25%	0.4	20	1.2	15	5	Microstrip	-55~+85	12×12×4
UIYMI1010A	5.0~8.0	45%	0.4	20	1.25	15	5	Microstrip	-55~+85	10×10×4
UIYBMI129A	6.0~18.0	Full	1.4	14	1.7	10	1	Microstrip	-55~+85	12×9.7×6.0
	8.0~18.0	Full	1.0	15	1.6					
UIYMI78A	7.0~12.0	40%	0.5	20	1.25	15	5	Microstrip	-55~+85	7×8×3.5
UIYBMI67B	8.0~12.0	Full	0.6	17	1.35	10	3	Microstrip	-55~+85	6×7×3.5
UIYBMI78A	8.0~12.0	Full	0.6	18	1.35	10	3	Microstrip	-55~+85	7×8×3.0
UIYMI67A	8.0~18.0	45%	0.5	20	1.25	15	3	Microstrip	-55~+85	6×7×3.5
UIYBMI67A	11.0~18.0	Full	0.9	15	1.45	10	3	Microstrip	-55~+85	6×7×3
UIYMI56A	14.0~40.0	20%	0.5	20	1.25	10	3	Microstrip	-55~+85	5×6×3.5
UIYMI45A	18.0~24.0	20%	0.6	17	1.3	2	2	Microstrip	-55~+85	4.5×5.5×3.5
UIYMI45B	22.0~32.0	25%	0.7	17	1.3	2	2	Microstrip	-55~+85	4.5×5.5×3.5
UIYMI44A	24.0~40.0	15%	0.7	15	1.4	15	2	Microstrip	-55~+85	4×4×3
UIYMI44B	24.0~40.0	15%	0.7	15	1.4	15	4	Microstrip	-55~+85	4×4.6×3
UIYMI44C	37.0~43.0	100%	1.4	14	1.5	2	2	Microstrip	-55~+85	4×4.5×4

Waveguide Isolator

- Frequency range 5.4 to 110GHz.
- Military, space and commercial applications.
- Low insertion loss, high isolation, high power handling.
- Custom design available upon request.



Model No.	Freq.Range (MHz)	BW Max.	IL. (dB)	Isolation (dB)	VSWR	Forward Power(W)	Reverse Power(W)	Connector Type	Temp. (°C)	Dimension LxWxH(mm)
UIYWI49100A	5.4~8.0	20%	0.25	25	1.2	100	30	WR137(BJ70)	-40~+85	68.3x80x49.2
UIYWI4876A	7.0~10.0	20%	0.25	25	1.2	100	30	WR112(BJ84)	-40~+85	48x76x36
UIYWI4893A	8.0~12.0	Full	0.5	18	1.3	100	30	WR90(BJ100)	-40~+85	48x93x42
UIYWI4242A	8.0~12.4	25%	0.25	25	1.2	100	30	WR90(BJ100)	-40~+85	42x42x28
UIYWI4444A	10.0~15.0	20%	0.25	25	1.2	100	30	WR75(BJ120)	-40~+85	44.5x44.5x38.1
UIYWI3898A	12.0~18.0	Full	0.4	20	1.3	100	30	WR62(BJ140)	-40~+85	33.3x98x38
UIYWI3333A	12.4~18.0	20%	0.25	25	1.2	100	30	WR62(BJ140)	-40~+85	33x33x21
UIYWI2238A	17.7~21.6	90%	0.3	20	1.22	30	15	WR42(BJ220)	-55~+85	22.4x38x18
UIYWI2869A	18.0~26.5	Full	0.3	20	1.25	100	30	WR42(BJ220)	-40~+85	22.4x69x28
UIYWI3060A	19.2~31.0	Full	0.4	18	1.3	50	20	WR34(BJ260)	-40~+85	30x60x22.4
UIYWI3060B	21.7~33.0	15%	0.3	20	1.2	60	30	WR34(BJ260)	-40~+70	30x60x22.4
UIYWI2260A	22.0~33.0	Full	0.3	18	1.3	60	30	WR34(BJ260)	-40~+70	30x60x22.4
UIYWI2259A	26.5~40.0	Full	0.45	16	1.4	25	10	WR28(BJ320)	-40~+85	25.5x59.9x25.9
UIYWI2445A	26.5~40.0	10%	0.3	20	1.2	40	40	WR28(BJ320)	-40~+85	24x45x19.1
UIYWI1940A	27.0~31.0	Full	0.4	18	1.3	10	1	WR28(BJ320)	-40~+70	19x40x10
UIYWI2262A	27.0~31.0	Full	0.3	20	1.2	120	50	WR28(BJ320)	-40~+85	22.5x62.9x25.9
UIYWI1931A	27.0~31.0	Full	0.4	20	1.2	50	20	WR28(BJ320)	-40~+85	19x31.75x12.7
UIYWI1938A	29.0~31.0	Full	0.3	20	1.2	40	15	WR28(BJ320)	-40~+85	14x38x19
UIYWI2025B	33.0~38.0	Full	0.3	20	1.3	25	10	WR28(BJ320)	-40~+85	20x25x10
UIYWI2836A	33.0~50.0	15%	0.4	18	1.3	10	1	WR22(BJ400)	-40~+85	28.6x36.7x12.7
UIYWI1957A	43.0~46.0	Full	0.4	18	1.35	80	15	WR22(BJ400)	-40~+85	19.1x57.0x30
UIYWI1636A	47.0~51.5	Full	0.4	18	1.3	10	1	WR18(BJ500)	-40~+85	16x36x30
UIYWI2128A	50.0~60.0	Full	0.8	18	1.4	10	1	WR15(BJ620)	-40~+70	21x28x15
UIYWI2025A	51.0~59.0	Full	0.6	18	1.4	10	1	WR15(BJ620)	-40~+70	20x25.5x15
UIYWI1925A	71.0~86.0	10%	1.0	18	1.4	10	2	WR12(BJ740)	-55~+75	19.1x25.5x15
UIYWI1930A	81.0~86.0	Full	1.0	18	1.35	10	1	WR10(BJ900)	-40~+70	19.1x30x13.4
UIYWI2030A	93.5~94.5	Full	0.6	20	1.2	10	2	WR10(BJ900)	-40~+85	20x30x20

Coaxial Circulator

- Frequency range 10MHz to 40GHz, up to 30KW power.
- Military, space and commercial applications.
- Low insertion loss, high isolation, high power handling.
- Custom design available upon request.



Low frequency from 10MHz to 1875MHz, FM, VHF, UHF, etc

Model No.	Freq.Range (MHz)	BW Max.	IL. (dB)	Isolation (dB)	VSWR	Forward Power(W)	Reverse Power(W)	Connector Type	Temp. (°C)	Dimension LxWxH(mm)
UIYCC8080A	10~55	20%	1.2	20	1.25	50	50	N, SMA	+10~+65	80×80×28
UIYCC6060A	45~270	40%	0.5	25	1.15	200	200	N, SMA	-30~+70	60×60×28
UIYCC8080B	60~200	20%	0.3	23	1.2	500	500	N	0~+70	80×80×18
UIYCC100100A	70~130	20%	0.5	20	1.25	500	500	N	0~+70	100×100×40
UIYCC120140A	100~200	2%	0.4	23	1.2	1000 Peak 10KW	1000 Peak 10KW	7/16	0~+85	120×140×50
UIYCC5656A	130~900	40%	0.3	23	1.2	300	300	N, SMA	-30~+70	56×56×15
UIYCC3538A	200~1875	40%	0.3	30	1.15	300	300	N, SMA	-40~+85	35×38×15
UIYBCC6060F	225~400	Full	0.8 1.0	18 16	1.3 1.4	160	160	N, SMA	0~60 -40~+85	60×60×28
UIYCC4550A	250~1500	30%	0.3	23	1.15	300	300	N, SMA	-30~+70	45×50×24
UIYBCC6060H	300~475	Full	0.8 1.0	18 17	1.3 1.35	100	100	N, SMA	25±5 -40~+85	60×60×28
UIYCC5356A	300~1500	18%	0.3	23	1.2	500	500	N	-40~+85	53×56×20

700MHz to 40GHz, GSM,CDMA,WCDMA,LTE,L.S.C.X band, etc

Model No.	Freq.Range (MHz)	BW Max.	IL. (dB)	Isolation (dB)	VSWR	Forward Power(W)	Reverse Power(W)	Connector Type	Temp. (°C)	Dimension LxWxH(mm)
UIYCC3434A	0.7~2.0	40%	0.25	23	1.15	200	200	N, SMA	-40~+85	34×34×22
UIYCC3232A	0.7~2.5	35%	0.3	23	1.15	200	200	N, SMA	-40~+85	32×32×18
UIYCC2528A	0.7~5.0	30%	0.3	23	1.15	200	200	N, SMA	-40~+85	25.4×28.5×15
UIYCC4546A	1.0~3.8	15%	0.3	23	1.2	600	600	N	-40~+85	45×46×26
UIYCC104110A	2.0~4.0	10%	0.4	18	1.3	3000 Peak 30KW	3000 Peak 30KW	7/16	-55~+85	104×110×48
UIYCC1522A	4.4~7.2	25%	0.3	23	1.2	60	60	N, SMA	-40~+85	15×22.5×13.8
UIYCC2525A	4.0~8.0	20%	0.6	20	1.25	300	300	N	-20~+70	25×25.5×18
UIYCC1318A	6.0~36.0	75%	0.3	23	1.2	60	60	SMA,2.92mm	-55~+85	13×18×13.8
UIYBCC1325A	18.0~26.5	Full	1.6	14	1.6	10	10	SMA	-55~+85	13×25×16.6
UIYBCC1316A	26.5~40.0	Full	1.2	15	1.5	10	10	2.92mm	-55~+85	13×16×12.6

Drop in Circulator

- Frequency range 10MHz to 40GHz, up to 2000W power.
- Military, space and commercial applications.
- Low insertion loss, high isolation, high power handling.
- Custom design available upon request.



Low frequency from 10MHz to 3600MHz, FM, VHF, UHF, etc

Model No.	Freq.Range (MHz)	BW Max.	IL. (dB)	Isolation (dB)	VSWR	Forward Power(W)	Reverse Power(W)	Connector Type	Temp. (°C)	Dimension LxWxH(mm)
UIYDC8080A	10~55	20%	1.2	20	1.25	50	50	TAB	+10~+60	80x80x28
UIYDC6060A	45~270	40%	0.5	25	1.15	200	200	TAB	-30~+70	60x60x28
UIYDC8080B	60~200	20%	0.3	23	1.2	500	500	TAB	0~+70	80x80x18
UIYDC100100A	70~130	20%	0.5	20	1.25	500	500	TAB	0~+70	100x100x40
UIYDC5656A	130~900	40%	0.3	23	1.2	300	300	TAB	-30~+70	56x56x15
UIYDC3538A	200~1875	40%	0.3	30	1.15	300	300	TAB	-40~+85	35x38x11
UIYDC2525A	200~3600	30%	0.2	25	1.15	200	200	TAB	-40~+85	25.4x25.4x10.5
UIYBDC6060F	225~400	Full	0.8	18	1.3	160	160	TAB	0~60	60x60x28
			1.0	16	1.4				-40~+85	
UIYDC4242A	250~1300	35%	0.25	25	1.15	300	300	TAB	-30~+70	42x42x13
UIYBDC6060H	300~475	Full	0.8	18	1.3	100	100	TAB	25±5	60x60x28
			1.0	17	1.35				-40~+85	
UIYDC5356A	300~1500	18%	0.3	23	1.2	500	500	TAB	-40~+85	53x56x20

450MHz to 40GHz, GSM,CDMA,WCDMA,LTE,L.S.C.X band, etc

Model No.	Freq.Range (GHz)	BW Max.	IL. (dB)	Isolation (dB)	VSWR	Forward Power(W)	Reverse Power(W)	Connector Type	Temp. (°C)	Dimension LxWxH(mm)
UIYDC2020A	0.4~3.0	30%	0.25	25	1.15	100	100	TAB	-40~+85	20x20x10.6
UIYDC1919A	0.6~5.0	30%	0.25	25	1.15	100	100	TAB	-40~+85	19x19x8.6
UIYDC3232A	0.7~3.1	30%	0.3	23	1.15	200	200	TAB	-40~+85	32x32x11
UIYDC1212B	0.7~10.0	30%	0.3	23	1.2	60	60	TAB	-40~+85	12.7x12.7x8
UIYDC4546A	1.0~3.8	15%	0.3	23	1.2	600	600	TAB	-40~+85	45x46x26
UIYDC1220A	4.0~8.0	25%	0.25	23	1.2	60	60	TAB	-55~+85	12x20x8
UIYDC815A	5.0~25.0	40%	0.3	23	1.2	65	65	TAB	-55~+85	8.9x15x7.8
UIYDC1318A	17.0~36.0	20%	0.5	20	1.25	30	30	TAB	-40~+85	13x18x13.8
UIYBDC1325A	18.0~26.5	Full	1.6	14	1.6	10	10	TAB	-55~+85	13x25x16.6
UIYBDC1316A	26.5~40.0	Full	1.2	15	1.5	10	10	TAB	-55~+85	13x16x12.6

Broadband Circulator

- Frequency range 56MHz to 40GHz, up to 2000W power.
- Military, space and commercial applications.
- Low insertion loss, high isolation, high power handling.
- Custom design available upon request.



Coaxial type from 56MHz to 40GHz

Model No.	Freq.Range (MHz)	BW Max.	IL. (dB)	Isolation (dB)	VSWR	Forward Power(W)	Reverse Power(W)	Connector Type	Temp. (°C)	Dimension LxWxH(mm)
UIYBCC6060E	56~86	Full	1.5	16	1.4	60	60	N, SMA	-10~+60	60x60x28
UIYBCC6060A	68~88	Full	1.3	18	1.3	100	100	N, SMA	-10~+65	60x60x28
UIYBCC6060B	88~108	Full	0.65	20	1.25	100	100	N, SMA	-20~+70	60x60x28
UIYBCC6060C	130~180	Full	0.8	18	1.3	100	100	N, SMA	-20~+70	60x60x28
UIYBCC6060D	136~174	Full	0.65	20	1.25	100	100	N, SMA	-20~+70	60x60x28
UIYBCC6060F	225~400	Full	0.8	18	1.3	160	160	N, SMA	0~60	60x60x28
			1.0	16	1.4				-40~+85	
UIYBCC6060H	300~475	Full	0.8	18	1.3	100	100	N, SMA	25±5	60x60x28
			1.0	17	1.35				-40~+85	
UIYBCC3538A	380~460	Full	0.5	18	1.3	300	300	N, SMA	-30~+70	35x38x15
UIYBCC3538B	400~470	Full	0.4	20	1.25	300	300	N, SMA	-30~+70	35x38x15
UIYBCC3538C	600~800	Full	0.5	18	1.3	300	300	N, SMA	-30~+70	35x38x15
UIYBCC6060G	600~900	Full	0.5	16	1.4	100	100	N, SMA	-30~+75	60x60x26
UIYBCC3434B	700~900	Full	0.4	18	1.3	200	200	N, SMA	-30~+70	34x34x22
UIYBCC3434A	800~1000	Full	0.4	20	1.25	200	200	N, SMA	-30~+70	34x34x22
UIYBCC3434D	950~1415	Full	0.6	18	1.3	200	200	N, SMA	0~+60	34x34x22
UIYBCC4550A	950~1450	Full	0.6	16	1.4	200	200	N, SMA	-30~+70	45x50x26
UIYBCC3232A	960~1215	Full	0.4	20	1.25	200	200	N, SMA	-30~+70	32x32x18
UIYBCC3434F	1225~1875	Full	0.6	16	1.4	200	200	N, SMA	0~+60	34x34x22
Model No.	Freq.Range (GHz)	BW Max.	IL. (dB)	Isolation (dB)	VSWR	Forward Power(W)	Reverse Power(W)	Connector Type	Temp. (°C)	Dimension LxWxH(mm)
UIYBCC7272A	0.8~2.0	Full	1.3	12	1.6	300	300	N, SMA	+10~+70	72x72x27.4
UIYBCC3434G	1.0~1.3	Full	0.4	20	1.25	200	200	N, SMA	-30~+70	34x34x22
UIYBCC3538D	1.0~1.3	Full	0.4	20	1.25	300	300	N, SMA	-30~+70	35x38x15
UIYBCC3434C	1.0~1.5	Full	0.6	16	1.4	200	200	N, SMA	0~+60	34x34x22
UIYBCC6466A	1.0~2.0	Full	0.6	17	1.4	100	100	N, SMA	+10~+70	64x66x26
UIYBCC14272A	1.0~2.0	Full	1.4	33	1.4	300	300	N, SMA	+10~+70	142x72x27.4
UIYBCC7272B	1.0~2.0	Full	0.7	16	1.4	500	500	N	+10~+60	72x72x46
UIYBCC5049A	1.35~2.7	Full	0.5	18	1.3	100	100	N, SMA	0~+70	50.8x49.5x19
UIYBCC10149A	1.35~2.7	Full	1.0	36	1.3	100	100	N, SMA	0~+70	101.6x49.5x19

Model No.	Freq.Range (GHz)	BW Max.	IL. (dB)	Isolation (dB)	VSWR	Forward Power(W)	Reverse Power(W)	Connector Type	Temp. (°C)	Dimension LxWxH(mm)
UIYBCC5049B	1.5~3.0	Full	0.5	17	1.35	100	100	N, SMA	0~+70	50.8×49.5×19
UIYBCC10149B	1.5~3.0	Full	1.0	34	1.35	100	100	N, SMA	0~+70	101.6×49.5×19
UIYBCC3232B	1.6~2.0	Full	0.5	18	1.3	200	200	N, SMA	-20~+65	32×32×18
UIYBCC3232C	1.7~2.2	Full	0.6	18	1.3	200	200	N, SMA	-30~+70	32×32×18
UIYBCC4040A	1.7~3.5	Full	0.7	17	1.4	100	100	N, SMA	0~+70	40×40×20
UIYBCC3232D	1.8~2.4	Full	0.5	18	1.3	200	200	N, SMA	-30~+70	32×32×18
UIYBCC4040B	1.85~3.8	Full	0.7	17	1.35	100	100	N, SMA	0~+70	40×40×20
UIYBCC3234A	2.0~4.0	Full	0.6	17	1.35	100	100	N, SMA	+10~+70	32×34×21
UIYBCC6434A	2.0~4.0	Full	1.2	34	1.35	100	100	N, SMA	+10~+70	64×34×21
UIYBCC5972A	2.0~4.0	Full	0.6	16	1.4	500	500	N	+10~+60	59.4×72×50
UIYBCC3030A	2.0~6.0	Full	0.8	13	1.5	100	100	N, SMA	-40~+70	30.5×30.5×15
UIYBCC2528A	3.0~6.0	Full	0.5	18	1.3	100	100	N, SMA	-55~+85	25.4×28×14
UIYBCC5028A	3.0~6.0	Full	1.0	36	1.3	100	100	N, SMA	-55~+85	50.8×28×14
UIYBCC2122A	4.0~8.0	Full	0.5	18	1.3	100	100	N, SMA	-55~+85	21×22.5×15
UIYBCC4222A	4.0~8.0	Full	1.0	36	1.3	100	100	N, SMA	-55~+85	42×22.5×15
UIYBCC5654A	4.0~8.0	Full	0.6	16	1.4	300	300	N	-30~+70	56×54.3×36
UIYBCC1920A	6.0~18.0	Full	1.5	10	1.9	60	60	SMA	-30~+70	19×20.3×14
UIYBCC1318A	8.0~12.0	Full	0.5	18	1.3	60	60	SMA	-55~+85	13×18×13.8
UIYBCC2618A	8.0~12.0	Full	1.0	36	1.3	60	60	SMA	-55~+85	26×18×13.8
UIYBCC2618A4P	8.0~12.0	Full	1.0	36	1.3	60	60	SMA	-55~+85	26×18×13.8
UIYBCC1920B	8.0~18.0	Full	0.8	14	1.5	60	60	SMA	-30~+70	19×20.3×14
UIYBCC1318B	12.0~18.0	Full	0.5	18	1.3	60	60	SMA	-55~+85	13×18×13.8
UIYBCC2618B	12.0~18.0	Full	1.0	36	1.3	60	60	SMA	-55~+85	26×18×13.8
UIYBCC2618B4P	12.0~18.0	Full	1.0	36	1.3	60	60	SMA	-55~+85	26×18×13.8
UIYBCC1325A	18.0~26.5	Full	1.6	14	1.6	10	10	SMA	-55~+85	13×25×16.6
UIYBCC1316A	26.5~40.0	Full	1.2	15	1.5	10	10	2.92mm	-55~+85	13×16×12.6

Drop in type from 56MHz to 40GHz

Model No.	Freq.Range (MHz)	BW Max.	IL. (dB)	Isolation (dB)	VSWR	Forward Power(W)	Reverse Power(W)	Connector Type	Temp. (°C)	Dimension LxWxH(mm)
UIYBDC6060E	56~86	Full	1.5	16	1.4	60	60	TAB	-10~+60	60×60×28
UIYBDC6060A	68~88	Full	1.3	18	1.3	100	100	TAB	-10~+65	60×60×28
UIYBDC6060B	88~108	Full	0.65	20	1.25	100	100	TAB	-20~+70	60×60×28
UIYBDC6060C	130~180	Full	0.8	18	1.3	100	100	TAB	-20~+70	60×60×28
UIYBDC6060D	136~174	Full	0.65	20	1.25	100	100	TAB	-20~+70	60×60×28
UIYBDC6060F	225~400	Full	0.8	18	1.3	160	160	TAB	0~60	60×60×28
			1.0	16	1.4				-40~+85	
UIYBDC6060H	300~475	Full	0.8	18	1.3	100	100	TAB	25±5	60×60×28
			1.0	17	1.35				-40~+85	
UIYBDC3538A	380~460	Full	0.5	18	1.3	300	300	TAB	-30~+70	35×38×11
UIYBDC3538B	400~470	Full	0.5	20	1.25	300	300	TAB	-30~+70	35×38×11
UIYBDC3538C	600~800	Full	0.5	18	1.3	300	300	TAB	-30~+70	35×38×11

Model No.	Freq.Range (MHz)	BW Max.	IL (dB)	Isolation (dB)	VSWR	Forward Power(W)	Reverse Power(W)	Connector Type	Temp. (°C)	Dimension LxWxH(mm)
UIYBDC3232A	700~900	Full	0.5	20	1.2	250	250	TAB	-30~+70	32x32x11
UIYBDC2525A	800~1000	Full	0.6	18	1.3	200	200	TAB	-30~+70	25.4x25.4x10.5
UIYBDC3538F	950~1415	Full	0.6	16	1.4	300	300	TAB	0~+70	35x38x13
UIYBDC2525B	960~1215	Full	0.5	20	1.25	200	200	TAB	-30~+70	25.4x25.4x10.5
UIYBDC3538E	1225~1875	Full	0.6	16	1.4	300	300	TAB	0~+70	35x38x13
Model No.	Freq.Range (GHz)	BW Max.	IL (dB)	Isolation (dB)	VSWR	Forward Power(W)	Reverse Power(W)	Connector Type	Temp. (°C)	Dimension LxWxH(mm)
UIYBDC7272A	0.8~2.0	Full	1.3	12	1.6	300	300	TAB	+10~+70	72x72x27.4
UIYBDC6466A	1.0~2.0	Full	0.6	17	1.4	100	100	TAB	+10~+70	64x66x26
UIYBDC3538D	1.0~1.3	Full	0.4	20	1.25	300	300	TAB	-30~+70	35x38x11
UIYBDC5049A	1.35~2.7	Full	0.5	18	1.3	100	100	TAB	0~+70	50.8x49.5x19
UIYBDC10149A	1.35~2.7	Full	1.0	36	1.3	100	200	TAB	0~+70	101.6x49.5x19
UIYBDC5049B	1.5~3.0	Full	0.5	17	1.35	100	100	TAB	0~+70	50.8x49.5x19
UIYBDC10149B	1.5~3.0	Full	1.0	34	1.35	100	200	TAB	0~+70	101.6x49.5x19
UIYBDC4040A	1.7~3.5	Full	0.7	17	1.4	100	100	TAB	0~+70	40x40x20
UIYBDC2525C	1.8~2.0	Full	0.4	20	1.25	200	200	TAB	-30~+70	25.4x25.4x10.5
UIYBDC4040B	1.85~3.8	Full	0.7	17	1.35	100	100	TAB	0~+70	40x40x20
UIYBDC3234A	2.0~4.0	Full	0.6	17	1.35	100	100	TAB	+10~+70	32x34x21
UIYBDC6434A	2.0~4.0	Full	1.2	34	1.35	100	100	TAB	+10~+70	64x34x21
UIYBDC5972A	2.0~4.0	Full	0.6	16	1.4	500	500	TAB	+10~+60	59.4x72x50
UIYBDC3030A	2.0~6.0	Full	0.8	13	1.5	100	100	TAB	-40~+70	30.5x30.5x15
UIYBDC2528A	3.0~6.0	Full	0.5	18	1.3	100	100	TAB	-55~+85	25.4x28x14
UIYBDC5028A	3.0~6.0	Full	1.0	36	1.3	100	100	TAB	-55~+85	50.8x28x14
UIYBDC2528B	3.5~6.5	Full	0.5	18	1.3	100	100	TAB	-55~+85	25.4x28x14
UIYBDC5028B	3.5~6.5	Full	1.2	34	1.35	100	100	TAB	-55~+85	50.8x28x14
UIYBDC2122A	4.0~8.0	Full	0.5	18	1.3	100	100	TAB	-55~+85	21x22.5x15
UIYBDC4222A	4.0~8.0	Full	1.0	36	1.3	100	100	TAB	-55~+85	42x22.5x15
UIYBDC5654A	4.0~8.0	Full	0.6	16	1.4	300	300	TAB	-30~+70	56x54.3x36
UIYBDC1920A	6.0~18.0	Full	1.5	10	1.9	60	60	TAB	-30~+70	19x20.3x14
UIYBDC815A	8.0~12.0	Full	0.5	18	1.3	30	30	TAB	-55~+85	8.9x15x7.8
UIYBDC1716A	8.0~12.0	Full	1.0	36	1.3	30	30	TAB	-55~+85	17.6x16.5x7.5
UIYBDC1716A4P	8.0~12.0	Full	1.0	36	1.3	30	30	TAB	-55~+85	17.6x16.5x7.5
UIYBDC1920B	8.0~18.0	Full	0.8	14	1.5	60	60	TAB	-30~+70	19x20.3x14
UIYBDC815B	12.0~18.0	Full	0.6	18	1.35	30	30	TAB	-55~+85	8.9x15x7.8
UIYBDC1716B	12.0~18.0	Full	1.2	36	1.35	30	30	TAB	-55~+85	17.6x16.5x7.5
UIYBDC1716B4P	12.0~18.0	Full	1.2	36	1.35	30	30	TAB	-55~+85	17.6x16.5x7.5
UIYBDC1325A	18.0~26.5	Full	1.6	14	1.6	10	10	TAB	-55~+85	13x25x16.6
UIYBDC1316A	26.5~40.0	Full	1.2	15	1.5	10	10	TAB	-55~+85	13x16x12.6

Dual Junction Circulator

- Frequency range 10MHz to 40GHz, up to 500W power.
- Military, space and commercial applications.
- Low insertion loss, high isolation, high power handling.
- Custom design available upon request.



Coaxial type 10MHz to 27.5GHz, FM, VHF, UHF, GSM, CDMA, WCDMA, LTE, L.S.C.X band, etc

Model No.	Freq. Range (MHz)	Ports	BW Max.	IL. (dB)	Isolation (dB)	VSWR	Forward Power (W)	Reverse Power (W)	Connector Type	Dimension LxWxH (mm)
UIYCDC16080A	10~55	3 Port	20%	2.4	40	1.25	50	50	N, SMA	160x80x28
UIYCDC16080A4P	10~55	4 Port	20%	2.4	40	1.25	50	50	N, SMA	160x80x28
UIYCDC12060A	45~270	3 Port	40%	0.8	50	1.15	200	200	N, SMA	120x60x28
UIYCDC12060A4P	45~270	4 Port	40%	0.8	50	1.15	200	200	N, SMA	120x60x28
UIYCDC11256A	130~900	3 Port	40%	0.6	46	1.2	300	300	N, SMA	112x56x15
UIYCDC11256A4P	130~900	4 Port	40%	0.6	46	1.2	300	300	N, SMA	112x56x15
UIYCDC9648A	250~1000	3 Port	30%	0.6	50	1.15	400	400	N, SMA	96x48x24
UIYCDC9648A4P	250~1000	4 Port	30%	0.6	50	1.15	400	400	N, SMA	96x48x24
UIYCDC7038A	300~1300	3 Port	30%	0.6	55	1.15	300	300	N, SMA	70x38x15
UIYCDC7038A4P	300~1300	4 Port	30%	0.6	55	1.15	300	300	N, SMA	70x38x15
UIYCDC6834A	700~2000	3 Port	40%	0.6	45	1.2	200	200	N, SMA	68x34x22
UIYCDC6834A4P	700~2000	4 Port	40%	0.6	45	1.2	200	200	N, SMA	68x34x22
UIYCDC6432A	700~3500	3 Port	25%	0.6	50	1.15	200	200	N, SMA	64x32x18
UIYCDC6432A4P	700~3500	4 Port	25%	0.6	50	1.15	200	200	N, SMA	64x32x18
UIYCDC3928A	3500~7000	3 Port	20%	0.6	45	1.2	60	60	SMA	39x28x15
UIYCDC3928A4P	3500~7000	4 Port	20%	0.6	45	1.2	60	60	SMA	39x28x15
UIYCDC2618A	6000~27500	3 Port	20%	0.6	45	1.2	60	60	SMA, 2.92mm	26x18x12.7
UIYCDC2618A4P	6000~27500	4 Port	20%	0.6	45	1.2	60	60	SMA, 2.92mm	26x18x12.7
UIYBCC14272A	1000~2000	3 Port	Full	1.4	33	1.4	300	300	N, SMA	142x72x27.4
UIYBCC14272A4P	1000~2000	4 Port	Full	1.4	33	1.4	300	300	N, SMA	142x72x27.4
UIYBCC10149A	1350~2700	3 Port	Full	1.0	36	1.3	100	100	N, SMA	101.6x49.5x19
UIYBCC10149A4P	1350~2700	4 Port	Full	1.0	36	1.3	100	100	N, SMA	101.6x49.5x19
UIYBCC10149B	1500~3000	3 Port	Full	1.0	34	1.35	100	100	N, SMA	101.6x49.5x19
UIYBCC10149B4P	1500~3000	4 Port	Full	1.0	34	1.35	100	100	N, SMA	101.6x49.5x19
UIYBCC6434A	2000~4000	3 Port	Full	1.2	34	1.35	100	100	N, SMA	64x34x21
UIYBCC6434A4P	2000~4000	4 Port	Full	1.2	34	1.35	100	100	N, SMA	64x34x21
UIYBCC5028A	3000~6000	3 Port	Full	1.0	36	1.3	100	100	N, SMA	50.8x28x14
UIYBCC5028A4P	3000~6000	4 Port	Full	1.0	36	1.3	100	100	N, SMA	50.8x28x14
UIYBCC4222A	4000~8000	3 Port	Full	1.0	36	1.3	100	100	N, SMA	42x22.5x15
UIYBCC4222A4P	4000~8000	4 Port	Full	1.0	36	1.3	100	100	N, SMA	42x22.5x15
UIYBCC2618A	8000~12000	Full	1.0	36	1.3	60	60	SMA	-55~+85	26x18x13.8
UIYBCC2618A4P	8000~12000	Full	1.0	36	1.3	60	60	SMA	-55~+85	26x18x13.8

Model No.	Freq.Range (MHz)	Ports	BW Max.	IL (dB)	Isolation (dB)	VSWR	Forward Power(W)	Reverse Power(W)	Connector Type	Dimension LxWxH(mm)
UIYBCC2618B	12000~18000	Full	1.0	36	1.3	60	60	SMA	-55~+85	26x18x13.8
UIYBCC2618B4P	12000~18000	Full	1.0	36	1.3	60	60	SMA	-55~+85	26x18x13.8

Drop in type 10MHz to 20GHz, FM,VHF,UHF,GSM,CDMA,WCDMA,LTE,L.S.C.X band, etc

Model No.	Freq.Range (MHz)	Ports	BW Max.	IL (dB)	Isolation (dB)	VSWR	Forward Power(W)	Reverse Power(W)	Connector Type	Dimension LxWxH(mm)
UIYDDC16080A	10~55	3 Port	20%	2.4	40	1.25	50	50	TAB	160x80x28
UIYDDC16080A4P	10~55	4 Port	20%	2.4	40	1.25	50	50	TAB	160x80x28
UIYDDC12060A	45~270	3 Port	40%	0.8	50	1.15	200	100	TAB	120x60x28
UIYDDC12060A4P	45~270	4 Port	40%	0.8	50	1.15	200	100	TAB	120x60x28
UIYDDC11256A	130~900	3 Port	40%	0.6	46	1.2	300	300	TAB	112x56x15
UIYDDC11256A4P	130~900	4 Port	40%	0.6	46	1.2	300	300	TAB	112x56x15
UIYDDC5025A	200~3600	3 Port	30%	0.4	50	1.15	200	200	TAB	50.8x25.4x8.6
UIYDDC5025A4P	200~3600	4 Port	30%	0.4	50	1.15	200	200	TAB	50.8x25.4x8.6
UIYDDC5031A	200~3600	4 Port	30%	0.4	50	1.15	200	100	TAB	50.8x31.7x8.6
UIYDDC5031B	200~3600	4 Port	30%	0.48 15	50	1.15	200	100	TAB	50.8x31.7x8.6
UIYDDC7038A	300~1300	3 Port	30%	0.6	45	1.15	300	300	TAB	70x38x11
UIYDDC7038A4P	300~1300	4 Port	30%	0.6	45	1.15	300	300	TAB	70x38x11
UIYDDC3819A	600~5000	3 Port	30%	0.5	50	1.15	60	60	TAB	38x19x8.2
UIYDDC3819A4P	600~5000	4 Port	30%	0.5	50	1.15	60	60	TAB	38x19x8.2
UIYDDC2420A	4000~7000	3 Port	20%	0.6	45	1.2	60	60	TAB	24x20x8
UIYDDC2420A4P	4000~7000	4 Port	20%	0.6	45	1.2	60	60	TAB	24x20x8
UIYDDC1716A	7000~20000	3 Port	20%	0.6	46	1.2	60	60	TAB	17.6x16.5x7.5
UIYDDC1716A4P	7000~20000	4 Port	20%	0.6	46	1.2	60	60	TAB	17.6x16.5x7.5
UIYBDC14272A	1000~2000	3 Port	Full	1.4	33	1.4	300	300	TAB	142x72x27.4
UIYBDC14272A4P	1000~2000	4 Port	Full	1.4	33	1.4	300	300	TAB	142x72x27.4
UIYBDC10149A	1350~2700	3 Port	Full	1.0	36	1.3	100	100	TAB	101.6x49.5x19
UIYBDC10149A4P	1350~2700	4 Port	Full	1.0	36	1.3	100	100	TAB	101.6x49.5x19
UIYBDC10149B	1500~3000	3 Port	Full	1.0	34	1.35	100	100	TAB	101.6x49.5x19
UIYBDC10149B4P	1500~3000	4 Port	Full	1.0	34	1.35	100	100	TAB	101.6x49.5x19
UIYBDC6434A	2000~4000	3 Port	Full	1.2	34	1.35	100	100	TAB	64x34x21
UIYBDC6434A4P	2000~4000	4 Port	Full	1.2	34	1.35	100	100	TAB	64x34x21
UIYBDC5028A	3000~6000	3 Port	Full	1.0	36	1.3	100	100	TAB	50.8x28x14
UIYBDC5028A4P	3000~6000	4 Port	Full	1.0	36	1.3	100	100	TAB	50.8x28x14
UIYBDC4222A	4000~8000	3 Port	Full	1.0	36	1.3	100	100	TAB	42x22.5x15
UIYBDC4222A4P	4000~8000	4 Port	Full	1.0	36	1.3	100	100	TAB	42x22.5x15
UIYBDC1716A	8000~12000	3 Port	Full	1.0	36	1.3	30	30	TAB	17.6x16.5x7.5
UIYBDC1716A4P	8000~12000	4 Port	Full	1.0	36	1.3	30	30	TAB	17.6x16.5x7.5
UIYBDC1716B	12000~18000	3 Port	Full	1.2	36	1.35	30	30	TAB	17.6x16.5x7.5
UIYBDC1716B4P	12000~18000	4 Port	Full	1.2	36	1.35	30	30	TAB	17.6x16.5x7.5

Dual Junction Circulator

Model No.	Freq.Range (GHz)	BW Max.	IL. 1-3 (dB)	Isolation 3-1 (dB)	VSWR	Forward Power(W)	Reverse Power(W)	Connector Type	Temp. (°C)	Dimension LxWxH(mm)
UIYDMC108A	8.0~12.0	20%	0.5	30	1.25	10	5	Microstrip	-55~+85	10x8x2.5
UIYDMC108B	8.0~12.0	20%	0.5	30	1.25	10	5	Microstrip	-55~+85	10x8x2.5
UIYDMC87A	14.0~18.0	25%	0.45	30	1.25	10	3	Microstrip	-55~+85	8x7x2.5
UIYDMC87B	14.0~18.0	25%	0.45	30	1.25	10	3	Microstrip	-55~+85	8x7x2.5

Dual Junction Circulator – Magnetic Shield

Model No.	Freq.Range (GHz)	BW Max.	IL. 1-3 (dB)	Isolation 3-1 (dB)	VSWR	Forward Power(W)	Reverse Power(W)	Connector Type	Temp. (°C)	Dimension LxWxH(mm)
UIYDMC109A	8.0~12.0	20%	0.45	30	1.25	10	5	Microstrip	-55~+85	10.4x9x4
UIYDMC109B	8.0~12.0	20%	0.45	30	1.25	10	5	Microstrip	-55~+85	10.4x9x4
UIYDMC87C	14.0~18.0	25%	0.45	30	1.25	10	3	Microstrip	-55~+85	8x7x4
UIYDMC87D	14.0~18.0	25%	0.45	30	1.25	10	3	Microstrip	-55~+85	8x7x4

Surface Mount Circulator

- Frequency range 200MHz to 15GHz.
- Military, space and commercial applications.
- Low insertion loss, high isolation, high power handling.
- Custom design available upon request.



Surface Mount Circulator

Model No.	Freq.Range (GHz)	BW Max.	IL. (dB)	Isolation (dB)	VSWR	Forward Power(W)	Reverse Power(W)	Connector Type	Temp. (°C)	Dimension LxWxH(mm)
UIYSC25A	0.2~3.6	10%	0.25	25	1.15	100	100	SMT	-40~+85	Φ25.4x9
UIYSC36A	0.2~1.875	40%	0.2	30	1.15	200	200	SMT	-30~+70	Φ36x11
UIYSC20A	0.4~3.0	16%	0.25	25	1.15	60	60	SMT	-40~+85	Φ20.4x8.6
UIYSC15A	0.7~5.0	15%	0.3	23	1.2	60	60	SMT	-40~+85	Φ15.5x7
UIYSC12A	0.7~10.0	20%	0.3	23	1.2	30	30	SMT	-40~+90	Φ12.7x8
UIYSC7A	2.4~6.0	15%	0.35	20	1.22	15	15	SMT	-40~+105	Φ7x5.5
UIYSC10A	2.4~6.0	20%	0.3	21	1.2	30	30	SMT	-40~+85	Φ9.8x7
UIYSC9B	4.8~12.0	18%	0.4	20	1.25	30	30	SMT	-20~+60	Φ9x6.5

Microstrip Circulator

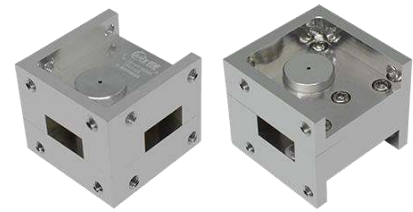
- Frequency Range 2.7 to 40GHz
- Military, space and commercial applications.
- Low insertion Loss, High Isolation, High power handling.
- Custom design available upon request.



Single Junction Circulator										
Model No.	Freq.Range (GHz)	BW Max.	IL. (dB)	Isolation (dB)	VSWR	Forward Power(W)	Reverse Power(W)	Connector Type	Temp. (°C)	Dimension LxWxH(mm)
UIYMC1414A	2.7~4.9	40%	0.4	20	1.2	15	15	Microstrip	-55~+85	14x14x5.5
UIYMC1212A	4.0~5.85	30%	0.4	20	1.2	15	15	Microstrip	-55~+85	12x12x4
UIYMC1010A	5.0~7.5	20%	0.4	20	1.2	15	15	Microstrip	-55~+85	10x10x4
UIYMC77A	7.0~9.5	25%	0.5	20	1.25	15	15	Microstrip	-55~+85	7x7x3.5
UIYBMC66A	8.0~12.0	Full	0.6	16	1.35	10	10	Microstrip	-55~+85	6x6x2.5
UIYMC66A	8.0~18.0	45%	0.5	20	1.25	15	15	Microstrip	-55~+85	6x6x2.5
UIYBMC66B	11.0~18.0	Full	1.0	15	1.45	10	10	Microstrip	-55~+85	6x6x3
UIYMC55B	14.0~23.0	20%	0.5	20	1.25	10	10	Microstrip	-55~+85	5x5x3.5
UIYMC44B	18.0~24.0	20%	0.6	17	1.35	2	2	Microstrip	-55~+85	4.5x4.5x3.5
UIYMC44C	22.0~32.0	25%	0.7	17	1.35	2	2	Microstrip	-55~+85	4.5x4.5x3.5
UIYMC44A	24.0~40.0	15%	0.7	15	1.4	15	15	Microstrip	-55~+85	4x4x3
UIYMC33Y	32.0~38.0	Full	1.0	14	1.45	10	10	Microstrip	-55~+85	3.5x3.5x2.5
Dual Junction Circulator										
Model No.	Freq.Range (GHz)	BW Max.	IL. (dB)	Isolation (dB)	VSWR	Forward Power(W)	Reverse Power(W)	Connector Type	Temp. (°C)	Dimension LxWxH(mm)
UIYDMC108A	8.0~12.0	20%	0.5	30	1.25	10	5	Microstrip	-55~+85	10x8x2.5
UIYDMC108B	8.0~12.0	20%	0.5	30	1.25	10	5	Microstrip	-55~+85	10x8x2.5
UIYDMC87A	14.0~18.0	25%	0.45	30	1.25	10	3	Microstrip	-55~+85	8x7x2.5
UIYDMC87B	14.0~18.0	25%	0.45	30	1.25	10	3	Microstrip	-55~+85	8x7x2.5
Dual Junction Circulator – Magnetic Shield										
Model No.	Freq.Range (GHz)	BW Max.	IL. (dB)	Isolation (dB)	VSWR	Forward Power(W)	Reverse Power(W)	Connector Type	Temp. (°C)	Dimension LxWxH(mm)
UIYDMC109A	8.0~12.0	20%	0.45	30	1.25	10	5	Microstrip	-55~+85	10.4x9x4
UIYDMC109B	8.0~12.0	20%	0.45	30	1.25	10	5	Microstrip	-55~+85	10.4x9x4
UIYDMC87C	14.0~18.0	25%	0.45	30	1.25	10	3	Microstrip	-55~+85	8x7x4
UIYDMC87D	14.0~18.0	25%	0.45	30	1.25	10	3	Microstrip	-55~+85	8x7x4

Waveguide Circulator

- Frequency range 5.4 to 110GHz.
- Military, space and commercial applications.
- Low insertion loss, high isolation, high power handling.
- Custom design available upon request.



Waveguide Circulator

Model No.	Freq.Range (GHz)	BW Max.	IL. (dB)	Isolation (dB)	VSWR	Forward Power(W)	Reverse Power(W)	Connector Type	Temp. (°C)	Dimension LxWxH(mm)
UIYWC6880A	5.4~8.0	20%	0.25	25	1.2	100	100	WR137(BJ70)	-40~+85	68.3x80x49.2
UIYWC6060A	7.0~10.0	20%	0.25	25	1.2	100	100	WR112(BJ84)	-40~+85	60x60x48
UIYWC4853B	8.0~12.0	Full	0.5	18	1.3	100	100	WR90(BJ100)	-40~+85	48x53x42
UIYWC4853A	8.0~12.4	30%	0.25	25	1.2	100	100	WR90(BJ100)	-40~+85	48x53x42
UIYWC4444A	10.0~15.0	20%	0.25	25	1.2	100	100	WR75(BJ120)	-40~+85	44.5x44.5x38.1
UIYWC3842A	12.0~18.0	Full	0.4	20	1.3	100	100	WR62(BJ140)	-40~+85	33.3x42x38
UIYWC3838A	12.4~18.0	20%	0.25	25	1.2	100	100	WR62(BJ140)	-40~+85	38x38x33
UIYWC2830A	18.0~26.5	Full	0.3	20	1.25	100	100	WR42(BJ220)	-40~+85	22.4x30x28
UIYWC3030A	19.2~31.0	Full	0.4	18	1.3	10	10	WR34(BJ260)	Room	30x30x22.4
UIYWC3030B	21.7~33.0	15%	0.3	20	1.2	60	60	WR34(BJ260)	-40~+70	30x30x22.4
UIYWC2230A	22.0~33.0	Full	0.4	18	1.3	60	60	WR34(BJ260)	-40~+70	30x30x22.4
UIYWC2225B	26.0~40.0	15%	0.3	20	1.2	80	80	WR28(BJ320)	-40~+85	25.5x25x25.9
UIYWC2225A	26.5~40.0	Full	0.45	16	1.4	25	25	WR28(BJ320)	-40~+85	25.5x25x25.9
UIYWC1027A	92.0~96.0	Full	0.8	18	1.35	2	2	WR10(BJ900)	-40~+60	10x27x14
UIYWC1924A	92.0~96.0	Full	1.2	14	1.6	2	2	WR10(BJ900)	-40~+60	19.1x24.8x19.1

Band Pass Filter

- Up to 20GHz.
- Military, space and commercial applications.
- Low insertion loss, high rejection, high power handling.
- Custom design available upon request.



Band Pass Filter-Low frequency from 50MHz to 9000MHz

Model No.	Pass Band (MHz)	IL. (dB)	VS WR	Rejection	Power (W)	Connector Type	Temp. (°C)	Dimension LxWxH(mm)
UIYBPF3020A	50~80 (BW 2.5MHz)	8.0	1.5	60dB @ 88~108MHz 40dB @ Fc±6.5MHz	5	SMA	-40~+85	30x20x12
UIYBPF269288A	94~95	1.2	1.3	40dB @ DC~88MHz 40dB @ 105 ~ 500MHz	10	N,SMA	-25~+60	269x288x120
UIYBPF4825A	130~700 (BW ~50MHz)	1.5	1.5	40dB @ Fc±6.5MHz	30	BNC,N,S MA	-40~+85	48x25x20
UIYBPF250166A	136~200 (BW 2.5MHz)	2.0	1.3	60dB @ 88~108MHz 40dB @ F0±6.5MHz	100	N,SMA	-40~+85	250x166x54
UIYBPF237158A	137~167 (BW 10~27MHz)	1.0	1.3	45dB @ Fc±~17MHz	20	N,SMA	-20~+55	237x185x100
UIYBPF6020A	149~165	2.0	1.3	60dB @ 88~108MHz 40dB @ 225~400MHz	10	N,SMA	-40~+85	60x20x20
UIYBPF338151A	153~162	2.0	1.5	40dB @ 146.5MHz 40dB @ 168.5MHz	100	N,SMA	-30~+70	338x151x48
UIYBPF225150A	195~225	0.3	1.22	55dB@DC~ 170MHz 55dB@250~ 1500MHz	100	N,SMA	-40~+85	225x150x85.5
UIYBPF4012A	200~400 (BW 10MHz)	3.0	1.5	20dB @ F0±25MHz	2	SMA	-40~+85	40.4x12x10
UIYBPF10673C	220	3.0	1.45	60dB @ Fc±10MHz	100	N,SMA	-40~+85	106x73x65
UIYBPF7373A	220~230 (BW ~0.7MHz)	3.5	1.3	60dB @ F0±10MHz 35dB @ F0±4.3MHz	50	N,SMA,B NC	-40~+85	73x73x50
UIYBPF6030A	225~400	1.5	1.5	40dB@DC- 200 MHz 40dB@500~1000MHz	60	SMA	-30~+70	60x30x20
UIYBPF4825B	225~400	1.5	1.5	40dB@DC- 200 MHz 40dB@500~1000MHz	30	SMA	-40~+85	48x25x16
UIYBPF220115A	240~320 (BW 30MHz)	1.0	1.3	100dB @ F0±40MHz	100	N,SMA	-30~+70	220x115x83
UIYBPF183124A	240~380 (BW 20~40MHz)	1.0	1.25	50dB @ FC±~25MHz	20	N,SMA	-40~+85	183x124x73
UIYBPF194126A	240~380	2.0	1.38	80dB@170~200MHz 80dB@420~500MHz 50dB@200~220MHz 50dB@400~420MHz 45dB @ DC~170MHz	100	N,SMA	-40~+70	194x126x25
UIYBPF205205A	290~320	1.0	1.25	105dB @ 230~270MHz 105dB @ 340~380MHz 70dB @ DC~230MHz 70dB @ 380~1650MHz	300	7/16, N	-40~+85	205x205x80
UIYBPF125125A	300~500 (BW ~5MHz)	0.5	1.22	60dB @ Fc±20MHz	100	N,SMA	-40~+85	125x125x64
UIYBPF220115B	360~380	1.0	1.3	100dB@DC~340MHz 100dB@400~2000MHz 80dB@2000~2500MHz	100	N,SMA	-40~+70	220x115x63
UIYBPF13587A	380~400 (BW ~5MHz)	2.0	1.3	40dB @ Fc±5MHz	50	N,SMA	-20~+60	135x87x68
UIYBPF21696A	380~420	0.7	1.3	45dB @ DC-360MHz 45dB @ 440~1000MHz	100	N,SMA	-40~+85	216x96x42

Model No.	Pass Band (MHz)	IL (dB)	VS WR	Rejection	Power (W)	Connector Type	Temp. (°C)	Dimension LxWxH(mm)
UIYBPF9393A	380~500 (BW ~8MHz)	2.0	1.3	40dB @F0±8MHz 60dB @88~108MHz	100	N,SMA	-40~+85	93x93x64
UIYBPF10673B	390~470 (BW ~7MHz)	2.0	1.3	60dB @88~108MHz 40dB @F0±8.5MHz	80	N,SMA	-40~+85	106x73x65
UIYBPF100104A	400~438 (BW 3~4MHz)	1.0	1.25	50dB @Fc±~20MHz	20	N,SMA	-40~+85	100x104x63
UIYBPF194100A	400~480	1.0	1.25	50dB @DC~375MHz 45dB @505~1500MHz	20	N,SMA	-40~+85	194x100x63
UIYBPF8383B	435~800 (BW 10MHz)	1.0	1.3	60dB @F0±50MHz	100	N,SMA	-40~+85	83x83x58
UIYBPF180120A	450~650 (BW10~150MHz)	1.0	1.3	70dB @Fc±78MHz 50dB @Fc±24MHz	50	N,SMA	-40~+85	180x120x58
UIYBPF17584A	442~448	3.0	1.3	50dB @380~440MHz 50dB @450~500MHz	50	N,SMA	-40~+85	175x84x65
UIYBPF300170A	470~477	2.5	1.3	80dB @DC~460MHz 80dB @480~1000MHz	100	N,SMA	-30~+70	300x170x76
UIYBPF11579A	470~488	2.0	1.5	40dB @F0±25MHz	100	N,SMA	-30~+70	115x79x64
UIYBPF100145A	491.4375~493.6125	5.0	1.3	40dB@488.4375~490.6125MHz	20	N,SMA	-10~+50	100x145x63
UIYBPF9191A	522~524	1.5	1.45	40dB @27~497MHz 40dB @551MHz 65dB @1000~2900MHz 85dB @3200~4000MHz	100	N,SMA	-40~+85	91x91x40
UIYBPF12183A	530~630	1.0	1.3	30dB @490MHz 30dB @670MHz	50	N,SMA,B NC	-40~+85	121x83x47
UIYBPF10673E	563~577	1.5	1.5	60dB @F0±30MHz	50	N,SMA	-40~+85	106x73x58
UIYBPF7373B	600~800 (BW 10MHz)	2.0	1.5	20dB @F0±25MHz	50	N, SMA	-40~+85	73x73x50
UIYBPF110110A	600~900 (BW ~30MHz)	1.2	1.3	50dB @Fc±~30MHz	20	N, SMA, BNC	-40~+85	110x110x43
UIYBPF7979A	650~2700 (BW 10~70MHz)	0.5	1.2	85dB @2nd Harmonic 70dB @3rd Harmonic	50	N,SMA	-40~+85	79x79x44
UIYBPF13973A	650~750	0.7	1.4	35dB @Fc±40MHz	100	N,SMA	-40~+85	139x73x50
UIYBPF9393C	686~692	1.0	1.3	50dB @DC~670MHz 50dB @708~3000MHz	50	7/16,N,S MA	-20~+60	93x93x47
UIYBPF12060A	703~894 (BW ~45MHz)	1.5	1.3	20dB@Fc±5MHz 55dB@Fc±43MHz	100	N,SMA	-40~+85	120x60x43
UIYBPF10673F	713~748	1.5	1.5	50dB @650~702MHz	100	7/16,N,S MA	-40~+85	106x73x48
UIYBPF278136A	800~1000 (BW ~60MHz)	1.4 ~2. 0	1.25	90dBc@Fc±50MHz 50dBc@Fc±30MHz 25dBc@Fc±10MHz	100	N,SMA,7/ 16	-20~+55	278x136x50
UIYBPF5454A	863~928 (BW ~13MHz)	1.0	1.22	55dB @Fc±~30MHz	30	N,SMA	-30~+70	54x54x45
UIYBPF6464A	863~928 (IP Grade: IP67)	1.0	1.22	55dB @Fc±~30MHz	30	N,SMA	-30~+70	64x64x43
UIYBPF24696A	870~880	2.0	1.3	100dB @885-960MHz	100	N,SMA	-20~+60	246x96x47
UIYBPF17384A	870~880	2.0	1.3	80dB @885-960MHz	100	N,SMA	-20~+60	173x84x47
UIYBPF10069A	885~889	3.0	1.5	70dB @925~960MHz 40dB @DC~880MHz	100	N,SMA	-40~+85	100x69x43

Model No.	Pass Band (MHz)	IL. (dB)	VS WR	Rejection	Power (W)	Connector Type	Temp. (°C)	Dimension LxWxH(mm)
UIYBPF12365A	900~1100	2.0	1.5	30dB @800MHz 30dB @1200MHz	100	N,SMA	-40~+70	123x65x47
UIYBPF18782A	902.2~927.5	3.5	1.3	50dB@DC~900MHz 50dB@930~3000MHz	50	N,SMA	-20~+65	187x82x47
UIYBPF10068A	952.5~967.5	1.5	1.3	60dB @DC~935MHz 60dB @985~3000MHz	50	N,SMA	-40~+85	100x68x43
UIYBPF12082A	930~952 (BW 4MHz)	2.0	1.3	50dB @Fc±8MHz	100	N,SMA	-40~+85	120x82x43
UIYBPF5539A	940~960	1.5	1.3	30dB @1850~2100MHz	10	N,SMA	-40~+85	55x51x26
UIYBPF12073A	980~1260	0.8	1.3	20dB@DC~950MHz 20dB@1290~3000MHz	20	N,SMA	-40~+85	120x73x36
UIYBPF6565A	1000~1300 (BW 10MHz)	2.0	1.5	20dB @F0±25MHz	50	N, SMA	-40~+85	65x65x37
UIYBPF16768A	1165~1585.65	1.0	1.35	60dB @1622.5~2000MHz 40dB @DC~1000MHz	50	N,SMA	-40~+85	167x68x47
UIYBPF10849A	1200~1500	0.5	1.5	80dB @DC~500MHz 80dB @2000~3000MHz 50dB @500~1000MHz 50dB @1670~2000MHz	25	N,SMA	-40~+70	108.2x49x20
UIYBPF8458A	1200~1800 (BW 50MHz)	1.0	1.3	20dB @F0±65MHz	10	N, SMA	-40~+85	84x58x29.5
UIYBPF11963A	1215~1400	0.8	1.5	65dB @1035MHz 75dB @1570~4000MHz	100	N,SMA	-40~+85	119x63x36
UIYBPF11576A	1290~1340	0.5	1.22	60dB@DC~1250MHz 60dB@1380~2680MHz	100	N,SMA	-30~+70	115x76x43
UIYBPF5959A	1300~1700 (BW 2~10MHz)	1.5	1.35	40dB @F0±25MHz	100	N,SMA	-40~+85	59x59x36
UIYBPF12080A	1350~1400	0.5	1.22	60dB @DC~1310MHz 60dB @1440~2400MHz	10	N,SMA	-40~+85	120x80x44
UIYBPF8366A	1350~1550	1.5	1.45	40dB @800MHz 40dB @1800MHz	100	N,SMA	-40~+85	83x66x14
UIYBPF10060A	1350~1785 (BW ~160MHz)	0.8	1.4	60dB @Fc±107MHz 60dB @2nd&3rd Harmonic	100	N,SMA	-55~+85	100x60x38
UIYBPF7855A	1350~1785 (BW ~160MHz)	3.0	1.5	40dB @Fc±107MHz	50	SMA	-55~+85	78x55x14
UIYBPF13068A	1380~1520	0.8	1.3	40dB@DC~1350MHz 40dB@1550~3000MHz	100	N,SMA	-40~+85	130x68x43
UIYBPF10673G	1400~2500 (BW ~50MHz)	0.75	1.3	50dB @F0±65MHz	10	N,SMA	-40~+70	106x73x31
UIYBPF8383A	1430~1470 (BW 2MHz)	1.5	1.35	35dB @F0±10MHz	10	N,SMA	-40~+85	83x83x36
UIYBPF8550A	1500~3200 (BW 60~4000MHz)	0.6	1.22	60dB@Fc ~40MHz	20	N, SMA	-40~+85	85x50x30
UIYBPF7075A	1556~1577	0.7	1.22	50dB@DC~1000MHz 55dB@1625~1660MHz	50	N, SMA	-55~+85	70x75x43
UIYBPF5030A	1556~1577	1.0	1.4	50dB@DC~1000MHz 55dB@1625~1660MHz	50	N, SMA	-55~+85	50x30x30

Model No.	Pass Band (MHz)	IL (dB)	VS WR	Rejection	Power (W)	Connector Type	Temp. (°C)	Dimension LxWxH(mm)
UIYBPF8570A	1610~1676	1.2	1.35	40dBc@DC~1000MHz 40dBc@1559~1592MHz 70dBc@1166~1278MHz 70dBc@2480~2502MHz 50dBc@3253~3319MHz 50dBc@4896~4962MHz 50dBc@6539~6605MHz 50dBc@8182~8248MHz 50dBc@9825~9891MHz 50dBc@11468~11534MHz	30	MCX,N,S MA	-45~+85	85x70x25
UIYBPF80115A	1616~1627	2.5	1.3	35dB @DC~1610MHz 35dB @1630~3000MHz	30	N, SMA	-20~+60	80x115x43
UIYBPF125125B	1618.25~1626.5	3.5	1.3	40dB@DC~1616.375MHz 40dB@1628.375~3000MHz	20	N, SMA	-20~+65	125x125x43
UIYBPF6038A	1700~2600	1.0	1.5	40dB@1300MHz&3000MHz 60dB@1000MHz&4000MHz	50	SMA	-40~+85	60x38x14
UIYBPF12565A	1700~2700 (BW ~70MHz)	1.2	1.3	50dB @Fc±~100MHz	20	N,SMA, BNC	-40~+85	125x65x38
UIYBPF8257A	1710~1780	1.5	1.5	40dB @1805~1880MHz	30	N,SMA	-40~+85	82x57x35
UIYBPF9062A	1710~1910 (BW ~105MHz)	0.8	1.5	60dB @Fc±35MHz	30	N,SMA	-40~+85	90x62x35
UIYBPF9090A	1710~1980 (BW ~75MHz)	1.5	1.3	70dB @Fc±20MHz	20	N,SMA	-40~+85	90x90x39
UIYBPF12028A	1800~2200 (BW 400MHz)	0.3	1.3	80dB @DC~1.0GHz 80dB @3.0~8.0GHz 65dB @1.0~1.4GHz 65dB @2.6~3.0GHz	20	N, SMA	-40~+85	120x28x24
UIYBPF12565B	1900~2070	1.0	1.3	40dB @DC~1870MHz 40dB @2100~4000MHz	50	N, SMA	-20~+50	125x65x43
UIYBPF12555A	1920~1980	1.2	1.3	60dB@DC~1900MHz 60dB@2000~3000MHz 50dB@3000~6000MHz IMD3: -150dBc@2x43dBm	100	N, SMA	-10~+55	125x55x39
UIYBPF14560A	1985~2295	1.8	1.3	50dB @DC~1955MHz 30dB @1955~1970MHz 30dB @2120~2135MHz 50dB @2135~4000MHz	20	N, SMA	-30~+70	145x60x32
UIYBPF11620A	2000~2400 (BW ~200MHz)	0.6	1.5	40dB @Fc±200MHz	20	N,SMA	-55~+85	116x20x35
UIYBPF6232A	2000~4000	1.0	1.5	60dB @DC~1100MHz 60dB @4900~7000MHz	2	SMA	-40~+85	62x32x13
UIYBPF7522A	2000 ~ 7000	1.5	1.8	45dB @DC~1.0GHz 45dB @8.0~14.0GHz	10	SMA	-40 ~ +70	75x22x11
UIYBPF7070A	2090~2190	0.6	1.3	30dB@DC~1980MHz 30dB@2300~ 3000MHz	100	N,SMA	-40~+85	70x70x43
UIYBPF12428A	2200~2280	1.0	1.5	35dB @2120MHz 35dB @2360MHz	100	N,SMA	-30~+70	124x28x40
UIYBPF9565A	2200~2300	1.0	1.3	40dB @DC~2130MHz 40dB @2370~4000MHz	50	N, SMA	-20~+50	95x65x43
UIYBPF12565C	2290~2365	0.75	1.3	50dB@DC~2240MHz 50dB@2400~4000MHz	50	N, SMA	-40~+70	125x65x34
UIYBPF9149A	2300~2900	1.0	1.25	35dB @2160MHz 35dB @3050MHz	100	N,SMA	-40~+85	91x49x32
UIYBPF8663A	2340~2370	1.0	1.3	70dB@DC~2300MHz 70dB@2410~3000MHz	50	N,SMA	-30~+70	86x63x38

Model No.	Pass Band (MHz)	IL. (dB)	VS WR	Rejection	Power (W)	Connector Type	Temp. (°C)	Dimension LxWxH(mm)
UIYBPF8858A	2400~2485	1.5	1.45	45dB @ DC~2350MHz 45dB @ 2540~5000MHz	50	N,SMA	-55~+85	88x58x28
UIYBPF7250A	2400~2500	2.0	1.5	30dB @ 2300MHz 30dB @ 2600MHz	100	N,SMA	-40~+70	72x50x27
UIYBPF15265A	2402~2484	1.5	1.5	80dB @ DC~2382MHz 80dB @ 2504~5000MHz	100	N,SMA	-40~+85	152x65x28
UIYBPF5353A	2495~2505	2.5	1.45	60dB @ DC~2000MHz 60dB @ 3000~7000MHz	50	N,SMA	-40~+85	53x53x24
UIYBPF11890A	2496~2690	1.5	1.3	70dB @ DC~2476MHz 70dB @ 2710~5000MHz	20	N, SMA	-40~+85	118x90x39
UIYBPF15565A	2545~2655	1.5	1.3	60dB @ DC~2525MHz 60dB @ 2675~6000MHz	20	N, SMA	-20~+50	155x65x34
UIYBPF12021A	2700~3100	1.3	1.2	50dB @ DC~2600MHz 50dB @ 3200~6000MHz	5	SMA	-30~+70	120x21x23
UIYBPF4430A	3000~5000	1.5	1.5	60dB @ Fc±1500MHz	10	SMA	-40~+85	44x30x12.5
UIYBPF12553A	3000~5000 (BW ~600MHz)	1.2	1.3	50dB @ Fc±~200MHz	20	N, SMA, BNC	-40~+85	125x53x33
UIYBPF6032A	3000 ~ 10000	1.5	1.8	50dB @ DC~1.5GHz 50dB @ 11.5~17.0GHz	10	SMA	-40 ~ +70	60x32x11
UIYBPF4314A	3300~3900	1.0	1.45	30dB @ DC~2.6GHz 16dB @ 4.4~6.0GHz 40dB @ 6.0~9.9GHz	10	SMA	-40~+105	43x41x22
UIYBPF4025A	3300~5000	1.0	1.5	45dB @ 6600~10000MHz 45dB @ DC~2000MHz	50	SMA	-40~+85	40x25x11
UIYBPF8648A	3400~3700	1.0	1.4	50dB @ 2500~2690MHz 50dB @ 4420~4960MHz	20	SMA	-20~+60	86x48x32
UIYBPF13065A	3420~3510	2.0	1.45	60dB @ DC~3410MHz 60dB @ 3520~4000MHz 50dB @ 4000~6000MHz IMD3: -150dBc @ 2x43dBm	100	N, SMA	-25~+75	130x65x39
UIYBPF6023A	3800~4000	1.5	1.5	40dB @ DC~3650MHz 40dB @ 4150~8000MHz	30	SMA	-40~+85	60x23x10
UIYBPF6535A	4000~7000 (BW ~150MHz)	3.0	1.5	30dB @ Fc±50MHz	10	SMA	-40~+85	65x35x16
UIYBPF5026A	4340~4460	3±1	1.5	90dB @ 2788MHz 60dB @ 806MHz&3594MHz 50dB @ 2620.8MHz&4567MHz 30dB @ 2928MHz&3524MHz 30dB @ 3095.2MHz&3664MHz 30dB @ 4092.8MHz&4260MHz	10	SMA	-40~+85	50x26x16.5
UIYBPF6922A	4500~8500	1.5	1.8	30dB @ DC~4000MHz 30dB @ 9000MHz	10	SMA	-40~+85	69x22x12
UIYBPF6143A	4900~5100	2.0	1.5	30dB @ 4700MHz 30dB @ 5300MHz	60	SMA	-40~+70	61x43x17
UIYBPF12026A	5000~6500	0.8	1.6	60dB @ DC~4.6GHz 60dB @ 6.9~10GHz	10	SMA	-40~+85	120x26x16
UIYBPF9550A	5100~5900	0.5	1.4	40dB @ DC~4450MHz 60dB @ 6200~8000MHz	75	SMA	-40~+85	95x50x28
UIYBPF15065A	5140~5280	0.75	1.3	70dB @ DC~5090MHz 70dB @ 5330~5900MHz	20	SMA, N	-20~+60	150x65x29
UIYBPF6016A	5170~5330	1.8	1.3	50dB @ DC~4950MHz 50dB @ 5520~13000MHz	10	SMA	-20~+60	60x16x15

Model No.	Pass Band (MHz)	IL. (dB)	VS WR	Rejection	Power (W)	Connector Type	Temp. (°C)	Dimension LxWxH(mm)
UIYBPF9016A	5400~5900	1.0	1.5	50dB @DC~5150MHz 50dB @6150~10000MHz	10	SMA	-30~+70	90x16x14
UIYBPF7022A	5670~5885	2.0	1.5	50dB @DC~5500MHz 40dB @6000~6050MHz 50dB @6050~13000MHz	10	SMA	-40~+85	70x22x10
UIYBPF7250B	5700~5850	0.5	1.3	30dB@DC~5500MHz 30dB@6000~10000MHz	20	SMA,N	-40~+70	72x50x28
UIYBPF4922A	6000~8000	1.5	1.5	60dB @Fc±1000MHz	10	SMA	-40~+85	49x22x10.5
UIYBPF5817A	6000 ~ 10000	1.5	1.8	50dB@DC~5.0GHz 50dB@11.0~16.0GHz	10	SMA	-40 ~ +70	58x17.6x10.6
UIYBPF4721A	6500~7500	1.5	1.8	30dB @DC~6000MHz 30dB @8000MHz	10	SMA	-40~+85	47x21x8
UIYBPF15547A	7000~9000 (BW 10MHz)	3.0	1.25	6dB @F0±10MHz 16dB @F0±15MHz	50	WR112, N-F	-40~+85	155x47.8x47.8
UIYBPF5620B	7000~9000	1.5	1.8	30dB @DC~6500MHz 30dB @9500MHz	10	SMA	-40~+85	56x20x8
UIYBPF3020B	7170~7270	2.5	1.3	55dB @DC~6500MHz 55dB @7900~9000MHz	2	SMA	-40~+85	30x20x20
UIYBPF10016A	7812~8612	2.5	1.43	40dB @DC~7612MHz 40dB @8812~ 18000MHz	5	SMA	-30~+70	100x16x12
UIYBPF4015A	7970~8090	2.0	1.4	60dB @DC~7240MHz 40dB @8500~18000MHz	5	SMA, TAB	-40~+85	40x15x10

Band Pass Filter- 8.0GHz to 40.0GHz

Model No.	Pass Band (GHz)	IL. (dB)	VS WR	Rejection	Power (W)	Connector Type	Temp. (°C)	Dimension LxWxH(mm)
UIYBPF8526A	8.0~12.0	2.0	1.35	20dB @DC~7.5GHz 20dB @ 12.5~20GHz	10	SMA	-40~+85	85x26x14
UIYBPF6417A	8.0 ~ 12.0	1.5	1.8	60dB@DC~7.0GHz 60dB@13.0~18.0GHz	10	SMA	-40 ~ +70	64.4x17x9
UIYBPF8015A	8.0 ~ 18.0	2.0	2.0	50dB@DC~7.0GHz 50dB@19.5~23.0GHz	10	SMA	-40 ~ +70	80.4x15.5x12
UIYBPF5815A	8.075~8.475	2.0	1.4	60dB @DC~7240MHz 40dB @8800~18000MHz	5	SMA, TAB	-40~+85	58x15x10
UIYBPF8418A	8.2~9.3	1.5	1.5	30dB @8000MHz 30dB @9500MHz	10	SMA	-40~+85	84x18x9
UIYBPF8844A	8.28~8.5	1.0	1.4	70dB @7700MHz & 8100MHz 70dB @8700MHz & 9100MHz	50	SMA	-40~+70	88x44x16.5
UIYBPF6016C	8.5~ 9.5	0.5	1.3	35dB @DC~7.5GHz 35dB @10.5~18.0GHz . 30dB @7.5~8.0GHz 30dB @10.0~10. 5GHz .	5	SMA	-30~+70	60x16x12
UIYBPF4213A	8.5 ~ 13.5	1.5	1.8	45dB@DC~5.5GHz 45dB@16.5~19.0GHz	10	SMA	-40 ~ +70	42.6x13x10
UIYBPF7419A	9.0~15.0	2.0	1.8	40dB @DC~8.3GHz 40dB @15.7~18.0GHz 25dB @8.3~8.5GHz 25dB @15.5~15.7GHz	2	SMA	-30~+70	74x19x8
UIYBPF5717A	9.0~15.0	1.5	1.8	60dB@DC~7.5GHz 60dB@17.0~22.0GHz	10	SMA	-40 ~ +70	57.8x17x10

Model No.	Pass Band (GHz)	IL (dB)	VS WR	Rejection	Power (W)	Connector Type	Temp. (°C)	Dimension LxWxH(mm)
UIYBPF5035A	9.1~9.76 (BW ~200MHz)	0.7	1.45	70dB @F0±300MHz	10	SMA	-40~+85	50x35x13.5
UIYBPF7817A	9.5~13.0	2.0	1.8	30dB @9000MHz 30dB @13500MHz	10	SMA	-40~+85	78x17x9
UIYBPF4012B	9.663~10.083	2.0	1.5	60dB @4500~8673MHz 60dB @11073~18000MHz	5	SMA	-40~+85	40x12x12
UIYBPF5313A	9.7~9.9	1.8	1.5	50dB @DC-9400MHz 50dB @10200-18000MHz	20	TAB, SMA	-40~+85	53x13x10
UIYBPF4815B	10.0 ~ 18.0	1.5	2.0	45dB@DC~7.0GHz 45dB@21.0~24.0GHz	10	SMA	-40 ~ +70	48.2x15x11
UIYBPF6214A	10.0 ~ 20.0	2.0	2.0	50dB@DC~8.5GHz 50dB@22.0~25.0GHz	10	SMA	-40 ~ +70	62.6x14.8x9.2
UIYBPF4517A	11.0~13.0	1.5	1.5	90dB @DC-6GHz 50dB @15~20GHz	20	SMA	-40~+85	45.4x17x9
UIYBPF7016A	12.0~18.0 (BW ~500MHz)	1.0	1.22	90dB @Fc±95MHz	5	SMA	-30~+70	70×16×12
UIYBPF7418A	12.0~18.0	1.5	1.7	60dB @DC~11.0GHz 60dB @19.0~22.0GHz	5	SMA	-30~+70	74x18x7
UIYBPF11033A	12.95~13.05	1.5	1.3	60dB @Fc±200MHz	10	WR62	-40~+85	110x33.3x33.3
UIYBPF7615A	13.5 ~ 17.5	2.5	1.8	50dB@DC~13.0GHz 50dB@18.0~23.0GHz	10	SMA	-40 ~ +70	76.5x15x8
UIYBPF8717A	13.7~14.55	1.5	1.5	30dB @14700MHz 80dB @12800MHz	10	SMA	-40~+85	87x17x9
UIYBPF6817A	13.75~14.5	3.0	1.8	30dB @10000~13600MHz 30dB @14650~20000MHz	5	SMA,TA B	-40~+85	68x17x7.8
UIYBPF6916A	15.0 ~ 18.0	2.0	1.8	40dB@DC~14.5GHz 40dB@18.5~25.0GHz	10	SMA	-40 ~ +70	69.1x16x7.6
UIYBPF4515A	15.0 ~ 19.0	2.0	1.8	70dB@DC~12.0GHz 70dB@22.0~26.0GHz	10	SMA	-40 ~ +70	45.8x15x7.5
UIYBPF4814A	15.0 ~ 20.0	1.5	1.8	70dB@DC~12.0GHz 70dB@23.0~26.0GHz	10	2.92mm	-40 ~ +70	48.8x14.5x7.6
UIYBPF9033A	15.25~15.75	0.8	1.3	30dB @Fc±750MHz	10	WR62	-40~+85	90x33.3x33.3
UIYBPF6016B	15.925~16.075	2.0	1.3	30dB @DC~15750MHz 30dB @16250~25000MHz	10	SMA	-20~+60	60x16x11
UIYBPF4214A	16.0 ~ 20.0	1.5	1.8	70dB@DC~12.0GHz 70dB@24.0~30.0GHz	10	2.92mm	-40 ~ +70	42.8x14x7.5
UIYBPF3414A	17.0 ~ 20.0	1.5	1.8	55dB@DC~13.0GHz 55dB@24.0~36.0GHz	10	2.92mm	-40 ~ +70	34.4x14x7
UIYBPF11022A	17.475~17.525	3.0	1.45	30dB @Fc±50MHz	10	SMA	-40~+85	110x22x11
UIYBPF3714A	18.0 ~ 23.0	2.0	1.8	60dB@DC~14.0GHz 60dB@27.0~40.0GHz	10	2.92mmF	-40 ~ +70	37.9x14x7
UIYBPF4514A	18.0 ~ 32.0	2.0	2.0	40dB@DC~15.8GHz 40dB@35.3~40.0GHz	10	2.92mm	-40 ~ +70	45.5x14x9
UIYBPF4714A	19.0 ~ 24.0	2.0	1.8	65dB@DC~16.0GHz 65dB@27.0~40.0GHz	10	2.92mm	-40 ~ +70	47.3x14x7.2
UIYBPF3314A	20.0 ~ 24.0	2.0	1.8	55dB@DC~15.0GHz 55dB@29.0~38.0GHz	10	2.92mm	-40 ~ +70	33.3x14x7
UIYBPF3514A	20.0 ~ 25.0	2.0	1.8	60dB@DC~15.0GHz 60dB@30.0~37.5GHz	10	2.92mm	-40 ~ +70	35x14x7

Model No.	Pass Band (GHz)	IL (dB)	VS WR	Rejection	Power (W)	Connector Type	Temp. (°C)	Dimension LxWxH(mm)
UIYBPF3514B	23.0 ~ 28.0	2.0	1.8	70dB@DC~16.5GHz 70dB@34.5~40.0GHz	10	2.92mm	-40 ~ +70	35.7x14x7
UIYBPF3414B	24.0 ~ 28.0	2.0	1.8	50dB@DC~19.0GHz 50dB@35.0~40.0GHz	10	2.92mm	-40 ~ +70	34.9x14x7
UIYBPF3514C	24.0 ~ 29.0	2.0	1.8	50dB@DC~19.0GHz 50dB@35.0~40.0GHz	10	2.92mm	-40 ~ +70	35.9x14x7
UIYBPF3213A	24.0 ~ 30.0	2.0	1.8	55dB@DC~18.0GHz 55dB@36.0~40.0GHz	10	2.92mm	-40 ~ +70	32.2x13x6.8
UIYBPF3213B	28.0 ~ 34.0	2.0	1.8	55dB@DC~22.0GHz 55dB@40.0GHz	10	2.92mm	-40 ~ +70	32.1x13x6.6
UIYBPF3013A	29.0 ~ 34.0	2.0	1.8	50dB@DC~23.0GHz 50dB@40.0GHz	10	2.92mm	-40 ~ +70	30.2x13x6.6
UIYBPF3513A	30.0 ~ 33.0	2.0	1.8	55dB@DC~25.0GHz 55dB@38.0~40.0GHz	10	2.92mm	-40 ~ +70	35x13x6.6
UIYBPF3714B	32.0 ~ 36.0	2.5	1.8	60dB@DC~28.0GHz 60dB@40.0GHz	10	2.92mm	-40 ~ +70	37x14x6.5
UIYBPF4814B	33.0 ~ 37.0	3.0	2.0	30dB@DC~32.0GHz 30dB@38.0~40.0GHz	10	2.92mm	-40 ~ +70	48.3x14x6.4

Low Pass Filter

- Frequency Range up to 20GHz.
- Military, space and commercial applications.
- Low insertion loss, high rejection, high power handling.
- Custom design available upon request.



Low Pass Filter								
Model No.	Pass Band (MHz)	IL (dB)	VSW R	Rejection	Power (W)	Connector Type	Temp. (°C)	Dimension LxWxH(mm)
UIYLPF3512A	DC-108	2.0	1.5	40dB@150~2000MHz	10	SMA	-40~+85	35x12x8
UIYLPF9080A	DC-170	0.5	1.3	45dB@850MHz	100	N,SMA	-40~+85	90x80x22
UIYLPF16054A	5~95	1.5	1.4	45dB@105~500MHz	10	SMA,N	-25~+55	160x54x20
UIYLPF4012A	5~285	2.0	1.5	45dB@330~650MHz	5	SMA	-40~+85	40.4x12x10
UIYLPF4825A	DC-400	1.0	1.5	20dB @500~1000MHz	40	SMA	-40~+85	48x25x16
UIYLPF18026A	DC-490	0.5	1.3	45dB @850MHz	100	N,SMA	-40~+85	180x26x20
	DC-500	1.5	1.5	40dB @700~2000MHz	50	N,SMA	-20~+55	
	DC-1500	1.5	1.5	40dB @1700~3000MHz	50	N,SMA	-20~+55	
UIYLPF9080A	850~865	0.5	1.3	45dB @1710~2560MHz 30dB @2560~4500MHz	100	N, SMA	-10~+70	90x80x22
UIYLPF4520A	DC-894	1.5	1.5	70dB@1760~2668MHz	5	SMA	-40~+85	45x20x12
UIYLPF8863A	DC-900	1.2	1.8	50dB@1.2~2.0GHz	30	SMA	-40~+85	88.5x63x12
UIYLPF19048A	DC-1000	1.5	1.5	50dB@1.4~1.9GHz	30	SMA	-40~+85	190x48x12
UIYLPF15830A	DC-1000	0.55	1.5	40dB @2000~3000MHz	100	SMA,N	-40~+85	158x30x24
UIYLPF6420A	DC-1800	0.2	1.5	20dB@3220~3253MHz 25dB@4830~4879.5MHz 30dB@6440~6506MHz	10	SMA	-40~+85	64x20x16
UIYLPF5038A	DC-2000	1.0	1.8	50dB@2.3~2.4GHz	30	SMA	-40~+85	50x38x12
UIYLPF17227A	DC-2170	1.5	1.5	40dB@2.4~2.5GHz	100	N,SMA	-40~+85	172x27.6x21.6

Model No.	Pass Band (MHz)	IL (dB)	VSWR	Rejection	Power (W)	Connector Type	Temp. (°C)	Dimension LxWxH(mm)
UIYLPF9426A	DC-2200	0.55	1.5	40dB @4400~6000MHz	100	N,SMA	-40~+85	94x26x21
UIYLPF16525A	DC-2250	1.0	1.8	40dB@2580~8000MHz	100	SMA, N	-30~+70	165.5x25x20
UIYLPF4630A	DC-2300	1.0	1.8	40dB@2700~6000MHz	10	SMA	-40~+85	46x30x12
UIYLPF8132A	DC-2600	1.5	1.8	30dB@3100~15000MHz	10	SMA	-40~+85	81x32x12
UIYLPF8032A	DC-2850	1.5	1.8	45dB@3.2~18.0GHz	5	SMA	-40~+85	80x32x12
UIYLPF4832A	DC-3000	1.0	1.8	50dB@3.5~6.0GHz	30	SMA	-40~+85	48x32x12
UIYLPF9923A	DC-3600	1.0	1.8	45dB@4.3~8.0GHz	100	SMA, N	-30~+70	99.5x23x18
UIYLPF4125A	DC-4000	1.0	1.8	50dB@4.7~8.0GHz	30	SMA	-40~+85	41x25x12
UIYLPF3325A	DC-5000	1.0	1.8	50dB@5.8~10.0GHz 20dB@5.4~5.8GHz 25dB@10.0~13GHz	30	SMA	-40~+85	33x25x12
UIYLPF3322A	DC-7000	1.0	1.8	50dB@8.1~14.0GHz	30	SMA	-40~+85	33x22x12
UIYLPF3022A	DC-8000	1.0	1.8	50dB@9.3~15.0GHz	30	SMA	-40~+85	30x22x12
UIYLPF2522A	DC-9000	1.0	2.0	50dB@12.0~16.0GHz	30	SMA	-40~+85	25x22x12
UIYLPF2522B	DC-10000	1.0	2.0	50dB@12.0~16.0GHz	30	SMA	-40~+85	25x22x12
UIYLPF2419A	DC-12000	1.0	2.0	50dB@14.0~20.0GHz	15	SMA	-40~+85	24x19x10
UIYLPF2319A	DC-13000	1.0	2.0	50dB@15.0~17.0GHz	30	SMA	-40~+85	23x19x12

High Pass Filter

- Up to 20GHz.
- Military, space and commercial applications.
- Low insertion loss, high isolation, high power handling.
- Custom design available upon request.



High Pass Filter								
Model No.	Pass Band (GHz)	IL (dB)	VSWR	Rejection	Power (W)	Connector Type	Temp. (°C)	Dimension LxWxH(mm)
UIYHPF3934A	0.118~0.16	0.9	1.3	25dB @88~108MHz	5	BNC,SMA,N	-40~+85	39x34x20
UIYHPF3525A	0.17~0.5	1.0	1.5	20dB @DC-150MHz	10	BNC,N,SMA	-40~+85	35x25x20
UIYHPF7191A	0.8~4.0	1.2	1.8	60dB @DC-600MHz	50	N,SMA	-30~+70	71x91x22
UIYHPF7043A	1.0~4.0	1.2	1.8	50dB @DC~800MHz	30	SMA	-40~+85	70.5x43x12
UIYHPF5548A	1.5~10.0	1.5	2.0	60dB @DC~1050MHz	10	SMA	-40~+85	55x48x12
UIYHPF3734A	2.0~6.0	1.5	2.0	45dB @DC-1654MHz	30	SMA, N	-40~+85	37x34x20
UIYHPF3733A	2.0~12.0	1.0	1.8	50dB @DC~1.6GHz	30	SMA	-40~+85	37x33x12
UIYHPF4022A	2.0~13.0	1.5	1.8	40dB @DC-934MHz	30	SMA	-40~+85	40x22x11
UIYHPF3818A	2.0~18.0	1.5	2.0	50dB @DC~1.1GHz	10	SMA	-40~+70	38x18x11
UIYHPF3430A	2.39~12.75	1.0	1.8	40dB @DC~1900MHz	10	SMA	-40~+85	34x30x12
UIYHPF3433A	3.0~12.0	1.0	1.8	50dB @DC-2.5GHz	30	SMA	-40~+85	34x33x12
UIYHPF3228A	3.0~18.0	1.5	1.8	50dB @DC-2.5GHz	10	SMA	-40~+85	32x28x11
UIYHPF5033A	3.5~9.0	1.0	1.7	40dB @DC~2.5GHz	10	SMA	-40~+85	50x33x11

Model No.	Pass Band (GHz)	IL (dB)	VSWR	Rejection	Power (W)	Connector Type	Temp. (°C)	Dimension LxWxH(mm)
UIYHPF3025B	3.8~18.0	1.5	2	50dB @0.5-2.9GHz	5	SMA	-40~+85	30×25×11
UIYHPF3025A	4.0~18.0	1.5	2	50dB @DC~2.7GHz	30	SMA	-40~+85	30×25×11
UIYHPF3426A	5.5~16.0	1.2	2	50dB @DC~4.2GHz	30	SMA	-40~+85	34×26×12
UIYHPF2822A	7.0~18.0	1.2	2	50dB @DC~5.9GHz	30	SMA	-40~+85	28×22×12
UIYHPF2723A	8.0~18.0	1.2	2	50dB @DC~6.8GHz	30	SMA	-40~+85	27×23×12
UIYHPF2825A	10.0~18.0	1.2	2	50dB @DC~8.5GHz	30	SMA	-40~+85	28×25×12

Band Stop Filter

- Band Reject Frequency 460 to 3800MHz.
- Military, space and commercial applications.
- Low insertion loss, high rejection, high power handling.
- Custom design available upon request.



Model No.	Rejection Frequency (MHz)	Pass Band Frequency	Rejection Min(dB)	VSWR	IL (dB)	Power (W)	Connector Type	Temp. (°C)	Dimension LxWxH(mm)
UIYBSF323111A	440~452	DC~420MHz 475~1000MHz	35	1.5	1.0	50	SMA,N	-30~+70	323x111x58.5
UIYBSF4012A	460~520	DC~402MHz 578~2000MHz	65	1.8	2.5	2	SMA	-55~+85	40.4x12x10
UIYBSF11060A	462.425	450~456.275MHz 462.8675~467MHz	20	1.45	1.5	50	SMA, N	-40~+80	110x60x63
UIYBSF3525A	616~638	50~576MHz 678~800MHz	40	1.8	2.5	5	SMA, N	-55~+85	35x25x20
UIYBSF280140A	791~821	DC~700MHz 832~2000MHz	40	1.7	1.5	100	SMA, N	-20~+55	280x140x48
UIYBSF25581A	824~849	DC~785MHz 885~1249MHz	40	2.0	1.5	50	SMA	-55~+85	255x81x53
UIYBSF25588A	832~837	DC~822MHz 847~1500MHz	40	2.0	1.5	50	SMA	-55~+85	255x88x53
UIYBSF15867A	868~870	DC~821MHz 925~1200MHz	50	1.3	0.5	50	SMA,N	-30~+70	158x67x43
UIYBSF247100A	870~880	DC~860MHz 885~2500MHz	40	2.0	2.0	100	N, SMA	-20~+65	247x100x50
UIYBSF29567A	930~965	DC~900MHz 995~2200MHz	40	2.0	1.5	50	SMA	-55~+85	295x67x43
UIYBSF165111A	1020~1100	DC~920MHz 1200~2100MHz	45	2.0	1.5	5	SMA	-40~+85	165x111x51
UIYBSF202152A	1025~1035	500~930MHz 1100~3000MHz	40	2.0	2.0	100	SMA	-40~+85	202.2x152.4x41.9
UIYBSF16168A	1258~1278	DC~1208MHz 1328~3000MHz	45	2.0	1.5	50	SMA	-55~+85	161x68x16
UIYBSF14768A	1557~1615	DC~1450MHz 1730~3000MHz	45	2.0	1.5	50	SMA	-55~+85	147x68x16
UIYBSF20960A	1700~1900	DC~1550MHz 2050~4500MHz	40	2.0	1.5	50	SMA,N	-55~+85	209x60x26
UIYBSF31170A	1800~3800 (BW30~2000)	Fc±~30MHz	50	2.0	3.0	50	SMA,N	-20~+65	311.6x70.5x26
UIYBSF12970A	1897~1903	DC~1885MHz 1915~3000MHz	40	2.0	1.5	50	SMA	-55~+85	129x70x18

Model No.	Rejection Frequency (MHz)	Pass Band Frequency	Rejection Min(dB)	VSW R	IL (dB)	Power (W)	Connector Type	Temp. (°C)	Dimension LxWxH(mm)
UIYBSF17957A	2100~2180	DC~2050MHz 2230~5000MHz	40	2.0	1.5	50	SMA,N	-55~+85	179x57x21
UIYBSF12069A	2320~2370	DC~2200MHz 2490~6000MHz	40	2.0	1.5	50	SMA	-55~+85	120x69x16
UIYBSF12255A	2400~2483	DC~2300MHz 2583~5000MHz	40	2.0	1.5	50	SMA	-55~+85	122x55x13
UIYBSF11968A	2487~2497	DC~2455MHz 2530~3000MHz	45	2.0	1.5	50	SMA	-55~+85	119x68x16
UIYBSF12070A	2592~2598	DC~2580MHz 2610~3000MHz	40	2.0	1.5	50	SMA	-55~+85	120x70x18
UIYBSF17235A	3600~3800	DC~3350MHz 4050~7000MHz	50	2.0	1.5	50	SMA	-55~+85	172x35x16

Coaxial Termination

- Frequency range DC-26.5GHz, up to 2000W power.
- Military, space and commercial applications.
- Custom design available upon request.



Model No.	Freq.Range	Power (W)	Connector Type	VSWR	Impedance (Ω)
UIYCT2AS3	DC-3GHz	2	SMA	1.07	50
UIYCT2AS6	DC-6GHz			1.1	
UIYCT2AS8	DC-8GHz			1.15	
UIYCT2AS124	DC-12.4GHz			1.2	
UIYCT2AS18	DC-18GHz			1.3	
UIYCT2AS265	DC-26.5GHz			1.35	
UIYCT2AN3	DC-3GHz	2	N	1.2	50
UIYCT2AN6	DC-6GHz			1.25	
UIYCT2AN124	DC-12.4GHz			1.25	
UIYCT2AN18	DC-18GHz			1.25	
UIYCT2AB3	DC-3GHz	2	BNC	1.2	50
UIYCT2AB6	DC-6GHz			1.25	
UIYCT5AS3	DC-3GHz	5	SMA	1.2	50
UIYCT5AS6	DC-6GHz			1.25	
UIYCT5AS124	DC-12.4GHz			1.15	
UIYCT5AS18	DC-18GHz			1.3	
UIYCT5AS265	DC-26.5GHz			1.3	
UIYCT5AN3	DC-3GHz	5	N	1.2	50
UIYCT5AN6	DC-6GHz			1.25	
UIYCT5AN124	DC-12.4GHz			1.25	
UIYCT5AN18	DC-18GHz			1.35	

Model No.	Freq.Range	Power (W)	Connector Type	VSWR	Impedance (Ω)
UIYCT10AS3	DC-3GHz	10	SMA	1.2	50
UIYCT10AS6	DC-6GHz			1.25	
UIYCT10AS124	DC-12.4GHz			1.2	
UIYCT10AS18	DC-18GHz			1.3	
UIYCT10AS265	DC-26.5GHz			1.35	
UIYCT10AN3	DC-3GHz	10	N	1.2	50
UIYCT10AN6	DC-6GHz			1.25	
UIYCT10AN8	DC-8GHz			1.25	
UIYCT10AN124	DC-12.4GHz			1.3	
UIYCT10AN18	DC-18GHz			1.35	
UIYCT25AS8	DC-8GHz	25	SMA	1.25	50
UIYCT25AS124	DC-12.4GHz			1.3	
UIYCT25AS18	DC-18GHz			1.35	
UIYCT25AN3	DC-3GHz	25	N	1.2	50
UIYCT25AN6	DC-6GHz			1.25	
UIYCT25AN8	DC-8GHz			1.25	
UIYCT25AN124	DC-12.4GHz			1.3	
UIYCT25AN18	DC-18GHz			1.35	
UIYCT30AS3	DC-3GHz	30	SMA	1.2	50
UIYCT30AS6	DC-6GHz			1.25	
UIYCT30AS124	DC-12.4GHz			1.3	
UIYCT30AS18	DC-18GHz			1.35	
UIYCT30AN3	DC-3GHz	30	N	1.2	50
UIYCT30AN6	DC-6GHz			1.25	
UIYCT50AS3	DC-3GHz	50	SMA	1.2	50
UIYCT50AS6	DC-6GHz			1.25	
UIYCT50AS124	DC-12.4GHz			1.3	
UIYCT50AS18	DC-18GHz			1.35	
UIYCT50AN3	DC-3GHz	50	N	1.2	50
UIYCT50AN6	DC-6GHz			1.25	
UIYCT50AN124	DC-12.4GHz			1.3	
UIYCT50AN18	DC-18GHz			1.35	
UIYCT80AN3	DC-3GHz	80	N	1.2	50
UIYCT80AN6	DC-6GHz			1.25	

Model No.	Freq.Range	Power (W)	Connector Type	VSWR	Impedance (Ω)
UIYCT100AN3	DC-3GHz	100	N	1.2	50
UIYCT100AN6	DC-6GHz			1.25	
UIYCT100AN124	DC-12.4GHz			1.3	
UIYCT100AN18	DC-18GHz			1.4	
UIYCT150AN3	DC-3GHz	150	N	1.2	50
UIYCT150AN6	DC-6GHz			1.25	
UIYCT200AN3	DC-3GHz	200	N	1.2	50
UIYCT200AN6	DC-6GHz			1.25	
UIYCT200AN8	DC-8GHz			1.25	
UIYCT200AN124	DC-12.4GHz			1.35	
UIYCT200AN18	DC-18GHz			1.45	
UIYCT300AN3	DC-3GHz	300	N, 7/16	1.25	50
UIYCT300AN6	DC-6GHz			1.3	
UIYCT300AN8	DC-8GHz			1.25	
UIYCT300AN124	DC-12.4GHz			1.35	
UIYCT300AN18	DC-18GHz			1.45	
UIYCT500AN3	DC-3GHz	500	N, 7/16	1.3	50
UIYCT500AN6	DC-6GHz			1.35	
UIYCT500AN8	DC-8GHz			1.25	
UIYCT500AN124	DC-12.4GHz			1.35	
UIYCT500AN18	DC-18GHz			1.45	
UIYCT1000A	DC-3GHz	1000	7/16	1.25	50
UIYCT1500A	DC-3GHz	1500	7/16	1.25	50
UIYCT2000A	DC-3GHz	2000	7/16	1.3	50

Coaxial Attenuator

- Frequency range DC-26.5GHz, up to 2000W power.
- Military, space and commercial applications.
- Custom design available upon request.



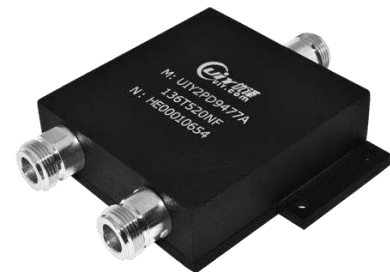
Model No.	Freq.Range	Power (W)	Connector Type	Attenuation Value(dB)	VSWR	Attenuation Tolerance(dB)		
						1 ~9	10 ~ 19	20 ~ more
UIYCA2AS3	DC-3GHz	2	SMA	1~60dB	1.15	±0.5	±0.6	±0.8
UIYCA2AS6	DC-6GHz				1.2	±0.5	±0.6	±0.8
UIYCA2AS8	DC-8GHz				1.2	±0.5	±0.6	±0.8
UIYCA2AS124	DC-12.4GHz				1.25	±1.0	±1.0	±1.8
UIYCA2AS18	DC-18GHz				1.35	±0.8	±1.0	±1.5
UIYCA2AN3	DC-3GHz	2	N	1~60dB	1.2	±0.5	±0.6	±0.8
UIYCA2AN6	DC-6GHz				1.25	±0.5	±0.6	±0.8
UIYCA2AN8	DC-8GHz				1.3	±0.5	±0.6	±0.8
UIYCA2AN124	DC-12.4GHz				1.3	±0.5	±0.8	±0.8
UIYCA2AN18	DC-18GHz				1.3	±1.0	±1.2	±1.2
UIYCA2AB3	DC-3GHz	2	BNC	1~40dB	1.2	±0.5	±0.6	±1.0
UIYCA2AB6	DC-6GHz				1.5	±0.7	±0.8	±1.5
UIYCA5AS3	DC-3GHz	5	SMA	1~30dB	1.2	±0.5	±0.6	±0.8
UIYCA5AS6	DC-6GHz				1.3	±0.6	±0.8	±1.5
UIYCA5AS8	DC-8GHz				1.2	±0.6	±0.6	±1.0
UIYCA5AS124	DC-12.4GHz	2	BNC	1~40dB	1.25	±0.6	±0.6	±1.0
UIYCA5AS18	DC-18GHz				1.3	±0.6	±0.6	±1.0
UIYCA5AN3	DC-3GHz	5	N	1~30dB	1.2	±0.5	±0.6	±0.8
UIYCA5AN6	DC-6GHz				1.3	±0.6	±0.8	±1.5
UIYCA5AN8	DC-8GHz				1.3	±0.6	±0.8	±1.0
UIYCA5AN124	DC-12.4GHz				1.25	±0.7	±0.7	±0.7
UIYCA5AN18	DC-18GHz				1.3	±1.0	±1.2	±1.2
UIYCA10AS3	DC-3GHz	10	SMA	1~40dB	1.2	±0.5	±0.6	±0.8
UIYCA10AS6	DC-6GHz				1.3	±0.6	±0.8	±1.5
UIYCA10AS8	DC-8GHz				1.3	±0.6	±0.8	±0.8
UIYCA10AS124	DC-12.4GHz				1.3	±0.6	±0.8	±1.0
UIYCA10AS18	DC-18GHz				1.3	±0.6	±0.8	±1.0
UIYCA10AS265	DC-26.5GHz				1.35	±1.5	±2.0	±2.0
UIYCA10AN3	DC-3GHz	10	N	1~30dB	1.2	±0.5	±0.6	±0.8
UIYCA10AN6	DC-6GHz				1.3	±0.6	±0.8	±1.5
UIYCA10AN8	DC-8GHz				1.3	±0.6	±0.8	±0.8
UIYCA10AN124	DC-12.4GHz				1.3	±0.8	±0.8	±1.0
UIYCA10AN18	DC-18GHz				1.35	±0.8	±0.8	±1.0

Model No.	Freq.Range	Power (W)	Connector Type	Attenuation Value(dB)	VSWR	Attenuation Tolerance(dB)		
						1 ~ 9	10 ~ 19	20 ~ more
UIYCA10AN3	DC-3GHz	10	N	1~30dB	1.2	±0.5	±0.6	±0.8
UIYCA10AN6	DC-6GHz				1.3	±0.6	±0.8	±1.5
UIYCA10AN8	DC-8GHz				1.3	±0.6	±0.8	±0.8
UIYCA10AN124	DC-12.4GHz				1.3	±0.8	±0.8	±1.0
UIYCA10AN18	DC-18GHz				1.35	±0.8	±0.8	±1.0
UIYCA25AS3	DC-3GHz	25	SMA	1~40dB	1.2	±0.5	±0.6	±0.8
UIYCA25AS5	DC-5GHz				1.3	±0.6	±0.8	±1.5
UIYCA25AS8	DC-8GHz				1.3	±0.8	±1.0	±1.2
UIYCA25AS124	DC-12.4GHz				1.4	±0.8	±1.0	±1.5
UIYCA25AS18	DC-18GHz				1.4	±1.0	±1.0	±1.5
UIYCA25AN3	DC-3GHz	25	N	1~30dB	1.2	±0.5	±0.6	±0.8
UIYCA25AN6	DC-6GHz				1.3	±0.6	±0.8	±1.5
UIYCA25AN8	DC-8GHz				1.3	±0.8	±1.0	±1.2
UIYCA25AN124	DC-12.4GHz				1.4	±0.8	±1.0	±1.5
UIYCA25AN18	DC-18GHz				1.4	±1.0	±1.0	±1.5
UIYCA30AS3	DC-3GHz	30	SMA	1~40dB	1.2	±0.5	±0.6	±0.8
UIYCA30AS5	DC-5GHz				1.3	±0.6	±0.8	±1.5
UIYCA30AN3	DC-3GHz	30	N	1~40dB	1.2	±0.5	±0.6	±0.8
UIYCA30AN6	DC-6GHz				1.3	±0.6	±0.8	±1.5
UIYCA50AS3	DC-3GHz	50	SMA	1~40dB	1.2	±0.5	±0.6	±0.8
UIYCA50AS5	DC-5GHz				1.3	±0.6	±1.0	±1.5
UIYCA50AS124	DC-12.4GHz				1.3	±1.5	±1.3	±1.3
UIYCA50AS18	DC-18GHz				1.35	±1.5	±1.3	±1.3
UIYCA50AN3	DC-3GHz	50	N	1~60dB	1.2	±0.5	±0.6	±0.8
UIYCA50AN6	DC-6GHz				1.3	±0.6	±0.8	±1.5
UIYCA50AN8	DC-8GHz				1.3	±1.0	±1.0	±1.2
UIYCA50AN124	DC-12.4GHz				1.35	±1.2	±1.2	±1.2
UIYCA50AN18	DC-18GHz				1.35	-1.5/+2.5	±1.8	±1.2
UIYCA100AN3	DC-3GHz	100	N	1~60dB	1.2	±0.5	±0.6	±0.8
UIYCA100AN6	DC-6GHz				1.3	±0.6	±0.8	±1.5
UIYCA100AN8	DC-8GHz				1.25	±0.8	±1.0	±1.5
UIYCA100AN124	DC-12.4GHz				1.35	±0.8	±1.0	±1.5
UIYCA100AN18	DC-18GHz				1.4	±0.8	±1.0	±1.5
UIYCA150AN3	DC-3GHz	150	N	1~60dB	1.2	±0.6	±0.8	±1.0
UIYCA150AN6	DC-6GHz				1.3	±0.6	±0.8	±1.5

Model No.	Freq.Range	Power (W)	Connector Type	Attenuation Value(dB)	VSWR	Attenuation Tolerance(dB)		
						1 ~9	10 ~ 19	20 ~ more
UIYCA200AN3	DC-3GHz	200	N	1~60dB	1.2	±0.6	±0.8	±1.0
UIYCA200AN6	DC-6GHz				1.3	±0.6	±0.8	±1.5
UIYCA200AN8	DC-8GHz				1.25		±0.8	±0.9
UIYCA200AN124	DC-12.4GHz				1.35		±0.9	±1.1
UIYCA200AN18	DC-18GHz				1.45		±2.5	±1.3
UIYCA300AN3	DC-3GHz	300	N, 7/16	5~60dB	1.2	±0.6	±0.8	±1.0
UIYCA300AN6	DC-6GHz				1.35	±0.8	±0.8	±1.5
UIYCA300AN8	DC-8GHz				1.25		±0.8	±0.9
UIYCA300AN124	DC-12.4GHz				1.35		±0.9	±1.1
UIYCA300AN18	DC-18GHz				1.45		±3.5	±1.3
UIYCA500A	DC-3GHz	500	N, 7/16	10~60dB	1.3		±1.0	±1.2
UIYCA500AN6	DC-6GHz	500	N	10~60dB	1.3		±2.0	±1.1
UIYCA500AN8	DC-8GHz				1.3		±2.0	±1.1
UIYCA500AN124	DC-12.4GHz				1.35		±2.0	±1.2
UIYCA500AN18	DC-18GHz				1.5		±5.0	±1.5
UIYCA1000A	DC-3GHz				1000	7/16, N	10~60dB	1.4
UIYCA1500A	DC-3GHz	1500	7/16, N	10~60dB	1.35	±1.5	±2.0	±2.5
UIYCA2000A	DC-3GHz	2000	7/16	10~60dB	1.35	±2.8	±2.8	±2.0
UIYCA2000C	DC-4.2GHz	2000	7/16, N	40dB	1.4			±2.0

2 Way Power Divider

- Frequency range 70MHz to 40GHz.
- Military, space and commercial applications.
- Low insertion loss, high isolation, high power handling.
- Custom design available upon request.



2 Way Power Divider

Model No.	Freq.Range (GHz)	IL (dB)	Isolation (dB)	VSWR Input	VSWR Output	Forward Power(W)	Reverse Power(W)	Connector Type	Temp. (°C)	Dimension LxWxH(mm)
UIY2PD158122A	0.07~0.52	0.7	20	1.3	1.3	50	2	N, SMA	-20~+70	158×122×24
UIY2PD8269A	0.087~0.108	0.5	18	1.3	1.3	30	1	N, SMA	-55~+85	82×69×18
UIY2PD9477A	0.136~0.52	0.5	18	1.3	1.3	50	2	N, SMA	-40~+85	94.5×77×23.5
UIY2PD116108A	0.136~0.96	0.6	22	1.25	1.25	50	2	N, SMA	-40~+85	116.5×108.1×21
UIY2PD4273A	0.35~6.0	1.8	16	1.5	1.5	25	1	SMA	-55~+85	42×73.5×11.5
UIY2PD6645A	0.4~0.8	0.4	20	1.3	1.3	30	1	BNC	-55~+85	66×45×18
UIY2PD5055A	0.4~4.0	1.5	18	1.4	1.4	10	1	SMA, N	-55~+85	50.5×55.5×20
UIY2PD2854A	0.5~2.0	0.5	20	1.3	1.2	30	3	SMA	-55~+85	28×54×10

Model No.	Freq.Range (GHz)	IL (dB)	Isolation (dB)	VSWR Input	VSWR Output	Forward Power(W)	Reverse Power(W)	Connector Type	Temp. (°C)	Dimension LxWxH(mm)
UIY2PD26157A	0.5~18.0	1.2	16	1.6	1.5	20	1	SMA	-55~+85	26×157×10
UIY2PD48157A	0.5~18.0	1.5	16	1.6	1.5	20	1	N	-55~+85	48×157×20
UIY2PD8860A	0.698~2.7 0.8~2.5	0.5	20	1.25	1.25	50	2	SMA, N, BNC	-40~+85	88×60×21
UIY2PD2835A	0.8~2.5	0.5	20	1.3	1.2	30	3	SMA	-55~+85	28×35×10
UIY2PD4036A	0.8~4.2	0.7	20	1.4	1.3	30	3	SMA	-55~+85	40×36×20
UIY2PD2828A	1.0~2.0	0.4	20	1.3	1.2	30	3	SMA	-55~+85	28×28×10
UIY2PD2828B	1.0~4.0	0.5	20	1.3	1.3	30	3	SMA	-55~+85	28×28×10
UIY2PD2828C	2.0~4.0	0.4	20	1.3	1.3	30	3	SMA	-55~+85	28×28×10
UIY2PD2828F	4.0~6.0	0.4	20	1.2	1.2	30	3	SMA	-55~+85	28×28×10
UIY2PD3033A	2.0~8.0	0.7	20	1.3	1.3	30	3	SMA, N	-55~+85	30×33×20
UIY2PD2828D	2.0~8.0	0.7	20	1.3	1.3	30	3	SMA	-55~+85	28×28×10
UIY2PD2447A	2.0~18.0	1.2	15	1.8	1.6	30	3	SMA	-55~+85	24×47×10
UIY2PD2828E	4.0~8.0	0.5	20	1.3	1.3	30	3	SMA	-55~+85	28×28×10
UIY2PD2436A	4.0~18.0	0.8	16	1.8	1.6	30	3	SMA	-55~+85	24×36×10
UIY2PD3728A	5.0~6.0	0.6	18	1.4	1.3	10	3	SMA	-55~+85	37×28×14
UIY2PD2619A	18.0~40.0	1.5	15	1.7	1.6	10	1	2.92mm	-40~+80	26×19×10

3 Way Power Divider

- Frequency range 87MHz to 40GHz.
- Military, space and commercial applications.
- Low insertion loss, high isolation, high power handling.
- Custom design available upon request.



Model No.	Freq.Range (GHz)	IL (dB)	Isolation (dB)	VSWR Input	VSWR Output	Forward Power(W)	Reverse Power(W)	Connector Type	Temp. (°C)	Dimension LxWxH(mm)
UIY3PD12071B	0.136~0.52	0.5	18	1.4	1.4	50	2	N, SMA	-40~+85	120×71×21
UIY3PD122158A	0.136~0.96	0.9	18	1.3	1.3	50	2	N, SMA	-40~+85	122×158×21
UIY3PD11244A	0.4~4.0	1.8	18	1.4	1.4	10	3	SMA	-40~+85	112×44×10
UIY3PD12071A	0.698~2.7 0.8~2.5	0.5	19	1.3	1.3	50	2	SMA, N	-40~+85	120×71×21
UIY3PD4152A	2.0~4.0	0.6	18	1.3	1.3	30	3	SMA	-55~+85	41×52×10
UIY3PD3766A	2.0~8.0	1.0	18	1.4	1.3	30	3	SMA	-55~+85	37.5×66.5×10
UIY3PD3944A	4.0~8.0	0.7	18	1.4	1.3	30	3	SMA	-55~+85	39×44×10

4 Way Power Divider

- Frequency range 87MHz to 40GHz.
- Military, space and commercial applications.
- Low insertion loss, high isolation, high power handling.
- Custom design available upon request.



Model No.	Freq.Range (GHz)	IL (dB)	Isolation (dB)	VSWR Input	VSWR Output	Forward Power(W)	Reverse Power(W)	Connector Type	Temp. (°C)	Dimension LxWxH(mm)
UIY4PD160128A	0.136~0.48	0.6	18	1.5	1.4	20	3	SMA, BNC	-30~+70	160x128x16.5
UIY4PD136119A	0.136~0.52	0.6	18	1.35	1.35	50	2	N, SMA	-40~+85	136.4x119x23
UIY4PD220162A	0.136~0.96	1.0	20	1.3	1.3	50	2	N, SMA	-40~+85	220x162x21
UIY4PD9976A	0.4~4.0	2.5	18	1.4	1.4	10	3	SMA	-35~+65	74.5x99.5x15.5
UIY4PD13555A	0.4~8.0	2.0	18	1.5	1.5	10	3	SMA	-55~+85	55x135x10
UIY4PD8562A	0.5~2.0	1.0	20	1.25	1.25	30	3	SMA	-55~+85	85x62x11
UIY4PD10172A	0.5~6.0	2.5	18	1.5	1.5	10	3	SMA	-35~+65	72.5x101x15.5
UIY4PD12071A	0.698~2.7 0.8~2.5	0.5	18	1.3	1.3	50	2	SMA, N	-40~+85	120x71x21
UIY4PD5650A	0.8~2.5	0.7	20	1.4	1.3	30	3	SMA	-55~+85	56x50x10
UIY4PD5643A	1.0~2.0	0.7	20	1.3	1.3	30	3	SMA	-55~+85	56x43x10
UIY4PD5643B	1.0~4.0	0.8	20	1.3	1.3	30	3	SMA	-55~+85	56x43x10
UIY4PD5643C	2.0~4.0	0.5	20	1.3	1.3	30	3	SMA	-55~+85	56x43x10
UIY4PD9452A	2.0~8.0	1.2	20	1.4	1.3	30	3	SMA, N	-55~+85	94x52x18
UIY4PD5650B	2.0~8.0	1.2	20	1.4	1.3	30	3	SMA	-55~+85	56x50x10
UIY4PD5458A	2.0~18.0	2.5	15	1.7	1.7	30	3	SMA	-55~+85	54x58x10
UIY4PD5643D	4.0~8.0	0.8	20	1.3	1.3	30	3	SMA	-55~+85	56x43x10
UIY4PD5060A	4.0~18.0	2.2	15	1.8	1.6	30	3	SMA	-55~+85	50.5x60x10
UIY4PD5045A	13.0~15.0	0.9	18	1.5	1.5	30	3	SMA	-55~+85	50.5x45x10
UIY4PD5230A	18.0~40.0	1.8	15	1.9	1.6	10	1	2.92mm	-40~+80	52x30x10

8 Way Power Divider

- Frequency range 87MHz to 40GHz.
- Military, space and commercial applications.
- Low insertion loss, high isolation, high power handling.
- Custom design available upon request.



Model No.	Freq.Range (GHz)	IL (dB)	Isolation (dB)	VSWR Input	VSWR Output	Forward Power(W)	Reverse Power(W)	Connector Type	Temp. (°C)	Dimension LxWxH(mm)
UIY8PD245174A	0.136~0.48	0.8	18	1.5	1.4	20	3	SMA, BNC	-30~+70	245.5×174×16.5
UIY8PD260159A	0.136~0.52	1.1	18	1.35	1.35	50	2	SMA, N	-40~+85	260×159×21
UIY8PD260159B	0.136~0.96	1.1	18	1.35	1.35	50	2	SMA, N	-40~+85	260×159×21
UIY8PD144103B	0.35~4.0	4.5	18	1.5	1.4	10	3	SMA	-35~+65	144.5×103.5×15.5
UIY8PD144103A	0.4~4.0	4.5	18	1.5	1.4	10	3	SMA	-35~+65	144.5×103.5×15.5
UIY8PD10880A	0.5~2.0	1.5	20	1.4	1.2	30	3	SMA	-55~+85	108×80×10
UIY8PD110140A	0.5~6.0	2.8	18	1.5	1.5	30	3	SMA	-40~+85	110×140×10
UIY8PD199106A	0.698~2.7 0.8~2.5 0.8~2.7	1.2	16	1.35	1.35	50	2	SMA, N	-40~+85	199×106.2×21.5
UIY8PD10875A	0.8~2.5	1.3	20	1.4	1.3	30	3	SMA	-55~+85	108×75×10
UIY8PD10863A	1.0~2.0	1.0	20	1.3	1.3	30	3	SMA	-55~+85	108×63×10
UIY8PD10863B	1.0~4.0	1.5	20	1.4	1.3	30	3	SMA	-55~+85	108×63×10
UIY8PD10863C	2.0~4.0	0.8	20	1.3	1.3	30	3	SMA	-55~+85	108×63×10
UIY8PD10863D	2.0~8.0	1.8	18	1.4	1.3	30	3	SMA	-55~+85	108×63×10
UIY8PD10863E	4.0~8.0	1.2	18	1.5	1.4	30	3	SMA	-55~+85	108×63×10
UIY8PD10162A	4.0~18.0	1.8	15	2.0	1.8	30	3	SMA	-55~+85	101.5×62×10
UIY8PD11348A	5.0~6.0	1.0	18	1.4	1.3	10	2	SMA	-55~+85	113×48×14

16 Way Power Divider

- Frequency range 87 to 40GHz.
- Military, space and commercial applications.
- Low insertion loss, high isolation, high power handling.
- Custom design available upon request.



Model No.	Freq.Range (MHz)	IL (dB)	Isolation (dB)	VSWR	Forward Power(W)	Reverse Power(W)	Connector Type	Temp. (°C)	Dimension LxWxH(mm)
UIY16PD218170A	400~4000	3.0	16	1.6	10	3	SMA-F	-55~+85	218×170×10
UIY16PD217105A	500~2400	2.3	18	1.5	10	3	SMA-F	-55~+85	217×105×11
UIY16PD22393A	700~3000	2.5	18	1.5	40	3	SMA-F	-55~+85	223×93×12
UIY16PD21759A	5000~6000	1.2	18	1.3	10	1	SMA-F	-55~+85	217×59×14

Duplexer

- Up to 20GHz.
- Military, space and commercial applications.
- Low insertion loss, high isolation, high power handling.



Duplexer									
Model No.	Freq.Range (MHz)		IL. (dB)	Isolation (dB)	VSWR	Power (W)	Connector Type	Temp. (°C)	Dimension LxWxH(mm)
UIYDX7191A	TX	30~520	0.8	45	1.45	50	N, SMA	-30~+70	71x91x22
	RX	698~2700							
UIYDX4053A	TX	45.5~69.0	3.0	15	1.5	2	BNC, N, SMA	-30~+70	40x53x20
	RX	80.0~103.3							
UIYDX14073A	60~800MHz		0.5	80	1.25	100	N, SMA	-30~+70	140x73x33
	TX->RX >30MHz								
UIYDX95115A	TX	136~174	0.8	70	1.45	100	N, SMA	-40~+70	95x115x25
	RX	400~470							
UIYDX4450A	TX	136~174	1.0	70	1.5	5	N, SMA	-40~+70	44x50x22
	RX	400~470							
UIYDX320420A	TX	145~158	1.0	80	1.3	100	N, SMA	-40~+85	320x420x100
	RX	168~180							
UIYDX310219A	140~170MHz		1.5	80	1.3	100	N, SMA	-30~+70	310x219x156
	TX->RX 5MHz								
UIYDX482192A	148~174MHz		1.8	80	1.3	100	N, SMA	-30~+65	482.6x192x177.6
	TX->RX 4.6MHz								
UIYDX148310A	TX	151.06~154.125	1.0	65	1.35	50	N, SMA	-20~+65	148x310x156
	RX	158.765~160.09							
UIYDX260190A	TX	340~380	1.0	80	1.3	10	N, SMA	-40~+75	260x190x65
	RX	240~270							
UIYDX340210A	TX	292~318	0.5	95	1.3	400	7/16, N	-25~+55	340x210x82
	RX	244~270							
UIYDX275200A	TX	300~320	0.5	75	1.3	400	7/16, N	-25~+55	275x200x85
	RX	360~380							
UIYDX102200A	TX	344~351	1.0	50	1.3	10	N, SMA	-40~+85	102x200x65
	RX	381~396							
UIYDX245165A	TX	361~366	2.0	80	1.3	80	N, SMA	-30~+60	245x165x85
	RX	351~356							
UIYDX330114A	TX	380~386.6	1.5	60	1.3	200	7/16, N	-40~+85	330x114x79
	RX	390~396.6							

Model No.		Freq.Range (MHz)	IL. (dB)	Isolation (dB)	VSWR	Power (W)	Connector Type	Temp. (°C)	Dimension LxWxH(mm)
UIYDX136179A	TX	380~385	2.0	65	1.4	100	N, SMA	-40~+70	136x179x68
		380~395							
	RX	390~395							
		417~429							
UIYDX19383A	TX	380~395	1.5	70	1.4	100	N, SMA	-30~+70	193x83x68
	RX	450~470							
UIYDX218165A	400~470MHz		1.5	80	1.3	100	N, SMA	-30~+70	218x165x64
	TX->RX 5MHz								
UIYDX150176A	TX	426~430	1.5	70	1.3	20	N, SMA	-20~+60	150x176x75
	RX	412~416							
UIYDX155118A	TX	436.5~443.5	2.0	65	1.3	100	N, SMA	-30~+70	155x118x65
	RX	450~453							
UIYDX290120A	TX	449~452	1.0	65	1.3	50	N, SMA	-40~+85	290x120x49
	RX	470~485							
UIYDX140110A	TX	450~530	0.5	80	1.25	100	N, SMA	-55~+70	110x140x49
	RX	1420~1520							
UIYDX166125A	TX	455~470	1.0	80	1.3	100	N,SMA	-20~+60	166x125x67
	RX	405~419							
UIYDX290100A	TX	467~470	2.5	75	1.3	80	N, SMA	-30~+60	290x100x75
	RX	461~464							
UIYDX181297A	TX	491.4375~493.6125	5.0	75	1.3	50	N, SMA	-10~+50	181x297x80
	RX	488.4375~490.6125							
UIYDX121159A	TX	450~453	2.0	80	1.2	10	SMA	-30~+70	121x159x64
	RX	463~466							
UIYDX342174A	TX	448.2~454.8	1.5	60	1.3	50	N, SMA	-30~+70	342x174x69
	RX	463.2~469.8							
UIYDX220122A	TX	490~510	1.3	80	1.3	100	N, SMA	-40~+85	220x122x69
	RX	470~490							
UIYDX151151A	600~1000MHz		1.5	75	1.22	100	N, SMA	-30~+70	151x151x44
	TX->RX 10MHz								
UIYDX220125A	600~2200MHz		1.5	80	1.3	20	N, SMA	-40~+85	220x125x43
	TX->RX ~11MHz								
UIYDX170125A	600~2200MHz		1.5	80	1.3	20	N, SMA	-40~+85	170x125x43
	TX->RX ~13MHz								
UIYDX100160A	TX	663~698	1.5	60	1.3	20	N, SMA	-30~+70	100x160x47
	RX	617~652							
UIYDX100200A	650~2700MHz		1.5	70	1.3	30	N, SMA	-40~+80	100x200x47
	TX->RX ~13MHz								
UIYDX8862A	TX	840~845	1.0	60	1.3	50	N, SMA	-30~+70	88x62x43
	RX	1430~1444							

Model No.		Freq.Range (MHz)	IL (dB)	Isolation (dB)	VSWR	Power (W)	Connector Type	Temp. (°C)	Dimension LxWxH(mm)
UIYDX185155A	TX	703~748	1.5	100	1.3	80	N, SMA	-40~+85	185x155x47
	RX	758~803							
UIYDX15075A	TX	850~980	0.8	30	1.4	75	N, SMA	-40~+85	150x75x43
	RX	1150~1610							
UIYDX3526A	TX	850~960	2.0	55	1.5	2	SMA	-40~+70	35x26x10
	RX	1700~1900							
UIYDX14065A	TX	850~960	1.0	80	1.5	100	N, SMA	-40~+70	140x65x47
	RX	1700~1900							
UIYDX265140A	TX	921~960	1.6	75	1.22	50	N, SMA	-20~+65	265x140x43
	RX	876~915							
UIYDX11880A	TX	1350~1518	1.0	60	1.4	50	N, SMA	-55~+85	118x80x43
	RX	1625~1785							
UIYDX100120A	TX	1350~1518	0.5	40	1.4	250	N, SMA	-55~+85	100x120x38
	RX	1625~1785							
UIYDX12060A	TX	1406.5~1463.5	1.0	80	1.3	50	N, SMA	-20~+65	120x60x37
	RX	1651.5~1678.5							
UIYDX200102A	TX	1521	2.2	80	1.3	50	N, SMA	-20~+65	200x102x43
	RX	1529							
UIYDX121175A	TX	1662	3.0	50	1.3	50	N-F	-30~+70	121x175x35
	RX	1667							
UIYDX102102A	TX	1710~1785	2.0	60	1.5	100	N, SMA	-30~+70	102x102x29
	RX	1805~1880							
UIYDX10065A	TX	1805~1880	2.0	60	1.5	5	N, SMA	-20~+65	100x65x32
	RX	1710~1785							
UIYDX118118A	TX	1850~1910	1.5	60	1.5	100	N, SMA	-30~+70	118x118x35
	RX	1930~1990							
UIYDX10077A	TX	1920~1990	0.5	75	1.22	15	N, SMA	-25~+60	100x77x38.5
	RX	2110~2170							
UIYDX62112A	TX	1980~2010	1.0	60	1.3	10	N, SMA	-40~+85	62x112x43
	RX	2170~2200							
UIYDX107107A	TX	2500~2570	1.5	85	1.22	100	N, SMA	-30~+70	107x107x30
	RX	2620~2690							
UIYDX9976A	TX	2110~2170	2.0	60	1.5	100	N, SMA	-40~+70	99x76x27.5
	RX	2050~2060							
UIYDX12276A	TX	2620~2695	2.0	60	1.5	100	N, SMA	-40~+70	122x76x27.5
	RX	2545~2580							
UIYDX9580A	TX	5565~5725	1.5	60	1.45	50	N, SMA	-30~+70	95x80x24
	RX	5350~5510							
UIYDX9580B	TX	5725~5850	1.5	60	1.45	50	N, SMA	-30~+70	95x80x24
	RX	5565~5675							

Model No.		Freq.Range (MHz)	IL. (dB)	Isolation (dB)	VSWR	Power (W)	Connector Type	Temp. (°C)	Dimension LxWxH(mm)
UIYDX18097A	TX	7424~7544	1.2	70	1.5	20	SMA to WR112	-40~+70	180x97.7x19.5
	RX	7669~7789							
UIYDX10068A	TX	7450~7650	3.0	40	1.5	20	SMA	-40~+70	100x68x16
	RX	7700~7900							
UIYDX6733A	TX	7450~7900	1.5	70	1.5	20	SMA	-40~+70	67x33x14
	RX	12750~13250							
UIYDX4382A	TX	12500~12900	2.5	50	1.5	20	SMA	-40~+70	43x82x11.5
	RX	13100~13400							
UIYDX18484A	TX	12751~12863	1.5	70	1.3	20	SMA to WR75	-40~+70	184x82x19.5
	RX	13017~13129							

Triplexer

- Up to 20GHz.
- Military, space and commercial applications.
- Low insertion loss, high isolation, high power handling.
- Custom design available upon request.



Model No.		Freq.Range (MHz)	IL. (dB)	Isolation (dB)	VSWR	Power (W)	Connector Type	Temp. (°C)	Dimension LxWxH(mm)
UIYTX100120A	CH1	87 ~ 108	1.5	60	1.3	50	N, SMA	-20~+65	100x120x30
	CH2	351~366							
	CH3	402~416							
UIYTX100140A	CH1	136 ~ 174	0.8	70	1.4	50	N, SMA	-40~+85	100x140x35
	CH2	380~395							
	CH3	450~470							
UIYTX150124A	CH1	330~450	1.2	30	1.4	50	N, SMA	-40~+85	150x124x41
	CH2	850~980							
	CH3	1150~1610							
UIYTX10086A	CH1	850~1000	0.5	30	1.22	100	N, SMA	-30~+70	100x86x43
	CH2	1700~2000							
	CH3	2500~3000							
UIYTX11676A	CH1	1000~1250	0.5	30	1.22	100	N, SMA	-30~+70	116x76x40
	CH2	2000~2500							
	CH3	3000~3750							

Model No.	Freq.Range (MHz)		IL (dB)	Isolation (dB)	VSWR	Power (W)	Connector Type	Temp. (°C)	Dimension LxWxH(mm)
UIYTX9072A	CH1	1400~1600	0.5	30	1.22	100	N, SMA	-30~+70	90x72x33
	CH2	2900~3100							
	CH3	4400~4600							
UIYTX120120A	CH1	1710~1735	1.5	50	1.3	50	N, SMA	-30~+70	120x120x38
	CH2	1805~1830							
	CH3	1880~1920							
UIYTX135185A	CH1	1750~1850	0.8	100	1.3	100	N, SMA	-40~+85	135x185x43
	CH2	2025~2120							
	CH3	2200~2300							
UIYTX7667A	CH1	1750~1950	0.5	30	1.22	100	N, SMA	-30~+70	76x67x31
	CH2	3500~3900							
	CH3	5200~5900							
UIYTX7164A	CH1	2100~2300	0.5	30	1.22	100	N, SMA	-30~+70	71x64x27
	CH2	4200~4600							
	CH3	6300~6900							
UIYTX7164B	CH1	2400~2600	0.5	30	1.22	100	N, SMA	-30~+70	71x64x27
	CH2	4800~5200							
	CH3	7200~7800							

Tx & Rx Multicoupler

- Up to 20GHz.
- Military, space and commercial applications.
- Low insertion loss, high isolation, high power handling.
- Custom design available upon request.



Transmission & Receiver System

Model No.	Freq. Range (MHz)	Tx to Rx Separation	Channels	Isolation	IL (dB)	VSWR	Input Power	Receiver Amp	Dimension
UIY4T4RTR3UA	136~174	~4MHz	4 Tx 4 Rx 1 ANT	Tx-Rx 80dB Tx-Tx 70dB ANT-Tx 50dB Rx-Rx 25dB	9.5	1.25	50W/ CH	Yes +6dBm±1dBm Adjustable	3U
UIY2T2RTR2UB2C	350~520	~5MHz	2 Tx 2 Rx 1 ANT 1 Tx Coup 1 Rx Coup	Tx-Rx 85dB Tx-Tx 70dB ANT-Tx 50dB Rx-Rx 25dB	5.5	1.2	50W/ CH	Yes +5~+15dBm Adjustable	2U
UIY2T2RTR350158A	350~520	~5MHz	2 Tx 2 Rx 1 ANT	Tx-Rx 75dB Tx-Tx 28dB Rx-Rx 28dB	4.8	1.25	50W/ CH	No	350x158x 88

Model No.	Freq. Range (MHz)	Tx to Rx Separation	Channels	Isolation	IL. (dB)	VSWR	Input Power	Receiver Amp	Dimension
UIY2T8RTR2UB2C	350~520	~5MHz	2 Tx 8 Rx 1 ANT 1 Tx Coup 1 Rx Coup	Tx-Rx 85dB Tx-Tx 70dB ANT-Tx 50dB Rx-Rx 25dB	5.5	1.2	50W/ CH	Yes +5~+15dBm Adjustable	2U
UIY3T3RTR500320A	350~520	~5MHz	3 Tx 3 Rx 1 ANT	Tx-Rx 65dB Tx-Tx 25dB Rx-Rx 25dB	8.5	1.25	50W/ CH	No	500x320x 100
UIY4T4RTR3UB2C	350~520	~5MHz	4 Tx 4 Rx 1 ANT 1 Tx Coup 1 RX Coup	Tx-Rx 85dB Tx-Tx 70dB ANT-Tx 50dB Rx-Rx 25dB	8.5	1.25	50W/ CH	Yes +5~+15dBm Adjustable	3U
UIY4T8RTR3UB2C	350~520	~5MHz	4 Tx 8 Rx 1 ANT 1 Tx Coup 1 RX Coup	Tx-Rx 85dB Tx-Tx 70dB ANT-Tx 50dB Rx-Rx 25dB	8.5	1.25	50W/ CH	Yes +5~+15dBm Adjustable	3U

RX Splitter

- Up to 20GHz.
- Military, space and commercial applications.
- Low insertion loss, high isolation, high power handling.
- Custom design available upon request.



RX Splitter

Model No.	Freq. Range (MHz)	BW Max.	Isolation (dB)	VSWR	Channels	Receiver Amplifier	Amplifier Gain	Connector Type	Temp. (°C)	Dimension LxWxH(mm)
UIY2RS1UB	350~520	20%	25	1.2	2 RX 1 ANT	Yes	+5~+15dBm Adjustable	N	-30~+75	483x300x45
UIY4RS1UB	350~520	20%	25	1.2	4 RX 1 ANT	Yes	+5~+15dBm Adjustable	N	-30~+75	483x300x45
UIY6RS1UB	350~520	20%	25	1.2	6 RX 1 ANT	Yes	+5~+12dBm Adjustable	N	-30~+75	483x300x45
UIY8RS1UB	350~520	20%	25	1.2	8 RX 1 ANT	Yes	+5~+10dBm Adjustable	N	-30~+75	483x300x45

Tx Combiner

- Up to 20GHz.
- Military, space and commercial applications.
- Low insertion loss, high isolation, high power handling.
- Custom design available upon request.



Tx Same Band Combiner

Model No.	Freq. Range (MHz)	BW Max.	Channels	IL. (dB)	Isolation (dB)	VSWR	Input Power (W)	Connector Type	Temp. (°C)	Dimension LxWxH(mm)
UIY2TC1UA	100~200	30%	2 TX 1 ANT	4.5	75	1.2	50	N	-30~+75	483x300x45
UIY4TC1UA	100~200	30%	4 TX 1 ANT	7.5	75	1.2	50	N	-30~+75	483x300x45
UIY6TC1UA	100~200	30%	6 TX 1 ANT	10.5	75	1.2	50	N	-30~+75	483x300x45
UIY8TC1UA	100~200	30%	8 TX 1 ANT	10.5	75	1.2	50	N	-30~+75	483x300x45
UIY2TC1UC	175~400	10%	2 TX 1 ANT	4.5	75	1.3	50	N	-30~+75	483x300x45
UIY2TC1UB	350~520	10%	2 TX 1 ANT	3.8	75	1.2	50	N	-30~+75	483x300x45
UIY4TC1UB	350~520	10%	4 TX 1 ANT	7.0	75	1.2	50	N	-30~+75	483x300x45
UIY6TC1UB	350~520	10%	6 TX 1 ANT	9.5	75	1.2	50	N	-30~+75	483x300x45
UIY8TC1UB	350~520	10%	8 TX 1 ANT	10.5	75	1.2	50	N	-30~+75	483x300x45

Tx Notch Combiner

Model No.	Freq. Range (MHz)	Separation	Channels	IL. (dB)	Isolation (dB)	VSWR	Input Power (W)	Connector Type	Temp. (°C)	Dimension LxWxH(mm)
UIY2TC420210B	110~140	250KHz	2 TX 1 ANT	3.4	65dB	1.25	100	N	-10~+65	420x210x850
UIY3TC420410B	110~140	250KHz	3 TX 1 ANT	3.6	65dB	1.25	100	N	-10~+65	420x410x850
UIY4TC420420B	110~140	250KHz	4 TX 1 ANT	3.8	65dB	1.25	100	N	-10~+65	420x420x850
UIY6TC420630B	110~140	250KHz	6 TX 1 ANT	4.6	65dB	1.25	100	N	-10~+65	420x630x850
UIY8TC420844B	110~140	250KHz	8 TX 1 ANT	5.0	65dB	1.25	100	N	-10~+65	420x844x850
UIY2TC420210A	136~174	250KHz	2 TX 1 ANT	3.4	65dB	1.25	100	N	-10~+65	420x210x750
UIY3TC420410A	136~174	250KHz	3 TX 1 ANT	3.6	65dB	1.25	100	N	-10~+65	420x410x750

Model No.	Freq. Range (MHz)	Separation	Channels	IL. (dB)	Isolation (dB)	VSWR	Input Power (W)	Connector Type	Temp. (°C)	Dimension LxWxH(mm)
UIY4TC420420A	136~174	250KHz	4 TX 1 ANT	3.8	65dB	1.25	100	N	-10~+65	420×420×750
UIY6TC420630A	136~174	250KHz	6 TX 1 ANT	4.6	65dB	1.25	100	N	-10~+65	420×630×750
UIY8TC420844A	136~174	250KHz	8 TX 1 ANT	5.0	65dB	1.25	100	N	-10~+65	420×844×750
UIY2TC330170A	330~520	250KHz	2 TX 1 ANT	3.6	65dB	1.25	50	N	-10~+65	330×170×500
UIY3TC330420A	330~520	250KHz	3 TX 1 ANT	3.8	65dB	1.25	50	N	-10~+65	330×420×500
UIY4TC330330A	330~520	250KHz	4 TX 1 ANT	4.0	65dB	1.25	50	N	-10~+65	330×330×500
UIY6TC330500A	330~520	250KHz	6 TX 1 ANT	4.6	65dB	1.25	50	N	-10~+65	330×500×500
UIY8TC330670A	330~520	250KHz	8 TX 1 ANT	5.0	65dB	1.25	50	N	-10~+65	330×670×500

Hybrid Combiner

- Frequency Range 70 to 3800MHz.
- Military, space and commercial applications.
- Low insertion loss, high isolation, high power handling.
- Custom design available upon request.



Model No.	Freq. Range (MHz)	Channels	BW Max.	IL. (dB)	Isolation (dB)	VSWR	Power (W)	Connector Type	Temp. (°C)	Dimension LxWxH(mm)
UIY2T1HC422165A	70~174	2 to 1	Full	0.5	25	1.4	200	N, SMA	-30~+60	422×165×81
UIY2T2HC40030A	70~174	2 to 2	Full	0.5	25	1.3	200	N, SMA	-30~+60	400×30×30
UIY2T1HC16445A	136~174	2 to 1	Full	0.3	28	1.15	200	N, SMA	-40~+85	164×45×50
UIY3T1HC30480A	136~174	3 to 1	Full	0.9	20	1.3	200	N, SMA	-40~+85	304×80×50
UIY4T1HC30480A	136~174	4 to 1	Full	1.0	25	1.3	200	N, SMA	-40~+85	304×80×50
UIY2T1HC22040A	175~400	2 to 1	60%	0.8	23	1.3	200	N, SMA	-20~+70	220×40×45

Model No.	Freq.Range (MHz)	Channels	BW Max.	IL. (dB)	Isolation (dB)	VSWR	Power (W)	Connector Type	Temp. (°C)	Dimension LxWxH(mm)
UIY2T2HC23040A	175~400	2 to 2	60%	0.8	23	1.3	200	N, SMA	-20~+70	230x40x26.5
UIY4T2HC26280B	350~470	4 to 2	16%	0.6	25	1.25	200	N, SMA	-40~+85	262x80x50
UIY2T1HC13437A	350~520	2 to 1	Full	0.5	26	1.2	200	N, SMA	-40~+85	144x37.2x58
UIY2T2HC14844A	350~520	2 to 2	Full	0.5	25	1.2	200	N, SMA	-40~+85	148x44x23
UIY4T1HC30570A	350~520	4 to 1	Full	0.4	25	1.2	200	N, SMA	-40~+85	305x70x50
UIY8T1HC440120A	350~520	8 to 1	Full	0.8	25	1.2	400	N, SMA	-40~+85	440×120×50
UIY3T1HC30480B	400~470	3 to 1	Full	0.7	23	1.3	200	N, SMA	-40~+85	304x80x50
UIY2T1HC14244A	698~2700	2 to 1	Full	0.5	23	1.25	200	N, SMA	-40~+85	142x44x45
UIY2T2HC14844B	698~2700	2 to 2	Full	0.5	23	1.25	200	N, SMA	-40~+85	148x44x23

Directional Coupler

- Frequency range 136MHz to 18GHz.
- Military, space and commercial applications.
- Low insertion loss, high isolation, high power handling.
- Custom design available upon request.



Directional Coupler

Model No.	Freq.Range (GHz)	Nominal Coupling (dB)	Flatness (dB)	IL. (dB)	Directivity (dB)	VSWR	Power (W)	Connector Type	Temp. (°C)	Dimension LxWxH(mm)
UIYDCP14337B	0.136~0.174	5~40	±1.0	0.2	20	1.25	200	N	-20~+70	143x37x20
UIYDCP14337A	0.35~0.52	5~40	±1.0	0.2	20	1.25	200	N	-20~+70	143x37x20
UIYDCP22440A	0.35~2.7	5~40	±2.0	0.2	18	1.3	200	N	-35~+65	224.4x40x16.5
UIYDCP12815A	0.4~0.5	10~30	±0.7	0.5	18	1.25	50	SMA	-55~+85	128x15x11
UIYDCP13315A	0.5~2.5	10~30	±0.7	0.5	18	1.25	50	SMA	-55~+85	133x15x11
UIYDCP18044A	0.5~3.0	5~30	±1.0	0.24	18	1.3	300	N	-40~+80	180x44x21
UIYDCP12040A	0.698~2.7	5~40	±2.0	0.2	19	1.25	200	N	-20~+70	120x40x17.5
UIYDCP8515A	0.8~2.5	10~30	±0.7	0.5	18	1.25	50	SMA	-55~+85	85x15x11
UIYDDCP21424A	0.8~3.6 Dual	7~10	±1.3	3.5	15	1.5	10	N, SMA	-40~+70	214x24x20
UIYDCP7315A	1.0~4.0	10~30	±0.7	0.5	18	1.25	50	SMA	-55~+85	73x15x11
UIYDCP8220A	1.0~4.0	6~30	±0.7	0.5	18	1.3	50	N	-55~+85	82x20x20

Model No.	Freq.Range (GHz)	Nominal Coupling (dB)	Flatness (dB)	IL. (dB)	Directivity (dB)	VSWR	Power (W)	Connector Type	Temp. (°C)	Dimension LxWxH(mm)
UIYDDCP7448A	1.4~2.0 Dual	30	±0.7	0.5	18	1.3	120	N, SMA	-40~+85	74×48×20
UIYDCP4315A	2.0~8.0	6 ~30	±0.7	0.5	18	1.25	50	SMA	-55~+85	43×15×11
UIYDCP4315D	2.5~5.2	10~30	±0.8	0.4	20	1.3	40	SMA	-55~+85	43×15×11
UIYDDCP5555A	3.0~4.0 Dual	50	±1.0	0.4	10	1.3	300	N	-40~+85	55×55×20
UIYDDCP10025A	3.0~6.0 Dual	10~30	±1.0	1.0	18	1.3	100	SMA, N	-55~+85	100×25×19
UIYDCP4315C	4.0~12.4	10~30	±0.8	0.5	15	1.35	20	SMA	-55~+85	43×15×11
UIYDCP5525A	2.0~8.0	6 ~30	±1.0	1.0	16	1.5	50	N	-55~+85	55×25×23
UIYDCP3315A	8.0~18.0	10~30	±0.7	0.8	10	1.5	50	SMA	-55~+85	33×15×11
UIYWCP10056A	9.0~10.0	6~50	±0.7	0.2	15	1.1	5000	WR90 (BJ100)	-55~+70	100×41.3×56.8

Waveguide to Coaxial Adapter

- Frequency range 0.32 to 112GHz.
- Military, space and commercial applications.
- Low insertion loss, high isolation, high power handling.
- Custom design available upon request.



Right Angle 90° Waveguide to Coaxial Adapter

Model No.	Freq.Range (GHz)	IL. (dB)	VSWR	Connector Type (Waveguide)	Connector Type (Coaxial)	CW Power (W)	Peak Power (KW)	Temp. (°C)
UIYWTCWR2300A	0.32~0.49	0.12	1.25	WR2300(BJ3)	N, SMA,7/16	100	3	-55~+85
UIYWTCWR2100A	0.35~0.53	0.12	1.25	WR2100(BJ4)	N, SMA,7/16	100	3	-55~+85
UIYWTCWR1800A	0.41~0.62	0.2	1.25	WR1800(BJ5)	N, SMA,7/16	100	3	-55~+85
UIYWTCWR1500A	0.49~0.75	0.12	1.25	WR1500(BJ6)	N, SMA,7/16	100	3	-55~+85
UIYWTCWR1150A	0.64~0.96	0.12	1.25	WR1150(BJ8)	N, SMA,7/16	100	3	-55~+85
UIYWTCWR975A	0.75~1.12	0.12	1.25	WR975(BJ9)	N, SMA,7/16	100	3	-55~+85
UIYWTCWR770A	0.96~1.45	0.12	1.2	WR770(BJ12)	N, SMA,7/16	100	3	-55~+85
UIYWTCWR650A	1.13~1.73	0.2	1.2	WR650(BJ14)	N, SMA,7/16	100	3	-55~+85
UIYWTCWR510A	1.45~2.20	0.2	1.2	WR510(BJ18)	N, SMA,7/16	100	3	-55~+85
UIYWTCWR430A	1.72~2.61	0.2	1.2	WR430(BJ22)	N, SMA,7/16	100	3	-55~+85
UIYWTCWR340A	2.17~3.30	0.2	1.15	WR340(BJ26)	N, SMA,7/16	100	3	-55~+85
UIYWTCWR284A	2.6~3.95	0.15	1.15	WR284(BJ32)	N, SMA,7/16	300	3	-55~+85
UIYWTCWR229A	3.22~4.90	0.15	1.15	WR229(BJ40)	N, SMA	100	3	-55~+85
UIYWTCWR187A	3.94~5.99	0.15	1.15	WR187(BJ48)	N, SMA	100	3	-55~+85

Model No.	Freq.Range (GHz)	IL (dB)	VSWR	Connector Type (Waveguide)	Connector Type (Coaxial)	CW Power (W)	Peak Power (KW)	Temp. (°C)
UIYWTCWR159A	4.64~7.05	0.2	1.15	WR159(BJ58)	N, SMA	100	3	-55~+85
UIYWTCWR137A	5.38~8.17	0.15	1.15	WR137(BJ70)	N, SMA	100	3	-55~+85
UIYWTCWR112A	6.57~9.99	0.2	1.15	WR112(BJ84)	N, SMA	50	3	-55~+85
UIYWTCWR90A	8.2~12.5	0.2	1.15	WR90(BJ100)	N, SMA	50	1	-55~+85
UIYWTCWR75A	9.84~15.0	0.2	1.15	WR75(BJ120)	SMA	50	1	-55~+85
UIYWTCWR62A	11.9~18.0	0.2	1.15	WR62(BJ140)	SMA	50	1	-55~+85
UIYWTCWR51A	14.5~22.0	0.25	1.2	WR51(BJ180)	SMA,2.92mm	50	1	-55~+85
UIYWTCWR42A	18.0~26.5	0.25	1.2	WR42(BJ220)	SMA,2.92mm	50	1	-55~+85
UIYWTCWR34A	21.7~33.0	0.25	1.2	WR34(BJ260)	2.92mm	3	0.1	-55~+85
UIYWTCWR28A	26.5~40.0	0.25	1.25	WR28(BJ320)	2.92mm,2.4mm	3	0.1	-55~+85
UIYWTCWR22A	33.0~50.0	0.4	1.25	WR22(BJ400)	2.4mm	3	0.1	-55~+85
UIYWTCWR19A	40.0~60.0	1.0	1.8	WR19(BJ500)	1.85mm	3	0.1	-55~+85
UIYWTCWR15A	49.8~75.5	1.0	2.0	WR15(BJ620)	1.85mm	3	0.1	-55~+85
UIYWTCWR12A	60.0~90.0	1.2	1.6	WR12(BJ740)	1.0mm	3	0.1	-55~+85
UIYWTCWR10A	75.0~110.0	1.2	1.6	WR10(BJ900)	1.0mm	3	0.1	-55~+85

End Launch 180° Waveguide to Coaxial Adapter

Model No.	Freq.Range (GHz)	IL (dB)	VSWR	Connector Type (Waveguide)	Connector Type (Coaxial)	CW Power (W)	Peak Power (KW)	Temp. (°C)
UIYWTCWR340E	2.17~3.30	0.2	1.25	WR340(BJ26)	N, SMA 7/16	100	3	-55~+85
UIYWTCWR284E	2.6~3.95	0.2	1.25	WR284(BJ32)	N, SMA, 7/16	100	3	-55~+85
UIYWTCWR284F	2.6~3.95	0.2	1.25	WR284(BJ32)	N, 7/16	300	3	-55~+85
UIYWTCWR187E	3.94~5.99	0.3	1.25	WR187(BJ48)	N, SMA	100	3	-55~+85
UIYWTCWR159E	4.64~7.05	0.3	1.25	WR159(BJ58)	N, SMA	100	3	-55~+85
UIYWTCWR137E	5.38~8.17	0.3	1.25	WR137(BJ70)	N, SMA	100	3	-55~+85
UIYWTCWR112E	6.57~9.99	0.3	1.25	WR112(BJ84)	N, SMA	50	3	-55~+85
UIYWTCWR90E	8.2~12.5	0.3	1.25	WR90(BJ100)	N, SMA	50	1	-55~+85
UIYWTCWR75E	9.84~15.0	0.3	1.25	WR75(BJ120)	SMA	50	1	-55~+85
UIYWTCWR62E	11.9~18.0	0.3	1.25	WR62(BJ140)	SMA	50	1	-55~+85
UIYWTCWR51E	14.5~22.0	0.3	1.3	WR51(BJ180)	SMA,2.92mm	50	1	-55~+85
UIYWTCWR42E	18.0~26.5	0.25	1.25	WR42(BJ220)	SMA,2.92mm	50	1	-55~+85
UIYWTCWR34E	21.7~33.0	0.25	1.2	WR34(BJ260)	2.92mm	3	0.1	-55~+85
UIYWTCWR28E	26.5~40.0	0.25	1.25	WR28(BJ320)	2.92mm,2.4mm	3	0.1	-55~+85
UIYWTCWR22E	33.0~50.0	0.5	1.6	WR22(BJ400)	2.4mm	3	0.1	-55~+85
UIYWTCWR19E	40.0~60.0	1.0	1.8	WR19(BJ500)	1.85mm	3	0.1	-55~+85

Model No.	Freq.Range (GHz)	IL. (dB)	VSWR	Connector Type (Waveguide)	Connector Type (Coaxial)	CW Power (W)	Peak Power (KW)	Temp. (°C)
UIYWTCWR15E	49.8~67.0	0.6	1.8	WR15(BJ620)	1.85mm	3	0.1	-55~+85
UIYWTCWR15F	50.0~75.0	0.6	1.5	WR15(BJ620)	1.0mm	3	0.1	-55~+85
UIYWTCWR12E	60.0~90.0	0.5	1.5	WR12(BJ740)	1.0mm	3	0.1	-55~+85
UIYWTCWR10E	73.8~112.0	1.5	1.8	WR10(BJ900)	1.0mm	3	0.1	-55~+85

Contact UIY

Address: No. 8, Lane 1, Xintun East Zone, Longgang District, Shenzhen 518172, China.

Tel: +86-755-83748888

+86-755-25999990

+86-755-25999909

+86-755-25999929

Fax: +86-755-25999959

E-mail: sales@uiy.com sales@uiy.com.cn

Website: www.uiy.com www.uiy.com.cn

Thanks for your kind attention, welcome contact us!

We wish you successful business and happy life!