



LEOPARD IMAGING INC

LI-CAM-OV10640-MIPI

Data Sheet

Features

- 1/2.56" 1.3M CMOS HD image sensor
- Active imaging pixels: 1280 H x 1080 V
- Pixel size: 4.2 μ m x 4.2 μ m
- MIPI interface
- High dynamic range (HDR)
- High low light sensitivity
- High speed serial data transfer with MIPI CSI-2
- Support full resolution 60 fps
- Low noise CMOS imaging technology that achieves CCD image quality
- Direct interface to TI DM385 IPNC or Leopard Imaging DM385 IP Camera

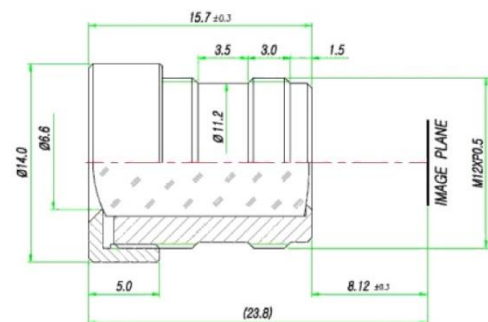
Application

- Digital video camera development
- High resolution surveillance IP network camera
- High resolution video conference camera



Default Lens Specification

- Model: 6016-650-54
- Image format: 1/3"
- Focal length: 6.0 mm
- Aperture, F/#: 1.6
- Back focal length: 8.3 mm
- Flange back length: 8.12 mm
- Built in IR cut filter
- FOV (D): 54 °
- Thread size: M12 x 0.5P



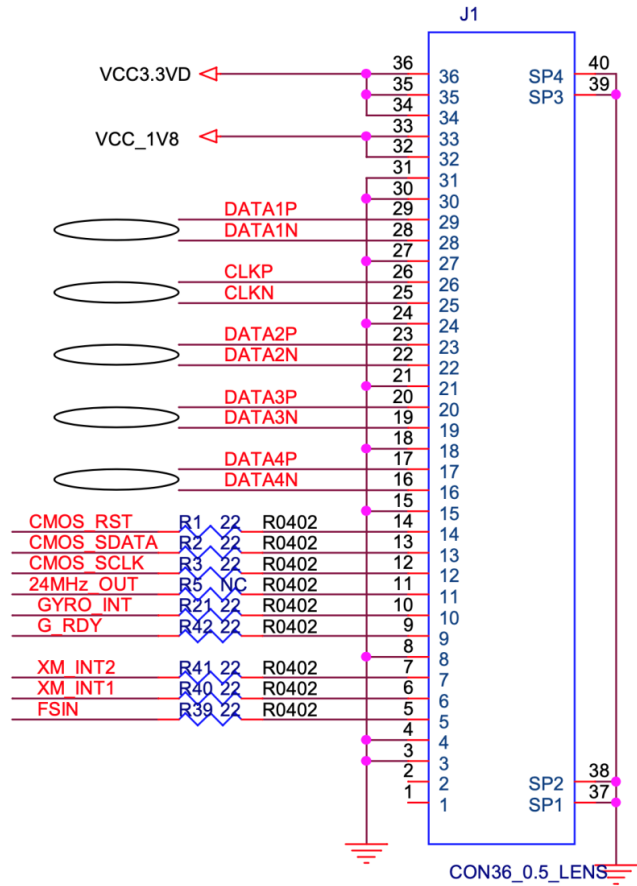
Leopard Imaging Inc.

48820 Kato Rd, Suite 100B, Fremont, CA 94538, USA
Phone: +1-408-263-0988
Fax: +1-408-217-1960
Email: sales@leopardimaging.com
Website: www.leopardimaging.com

Pin Assignment

Interface J1

- Part#: 0525593652
- Number of Positions: 36
- Pitch: 0.5mm
- FFC, FCB Thickness: 0.3mm
- Mating cable: LI-FLEX03



Leopard Imaging Inc.

48820 Kato Rd, Suite 100B, Fremont, CA 94538, USA
 Phone: +1-408-263-0988
 Fax: +1-408-217-1960
 Email: sales@leopardimaging.com
 Website: www.leopardimaging.com

Mouser Electronics

Authorized Distributor

Click to View Pricing, Inventory, Delivery & Lifecycle Information:

[Leopard Imaging:](#)

[LI-CAM-OV10640-MIPI](#)