

Floating Connectors

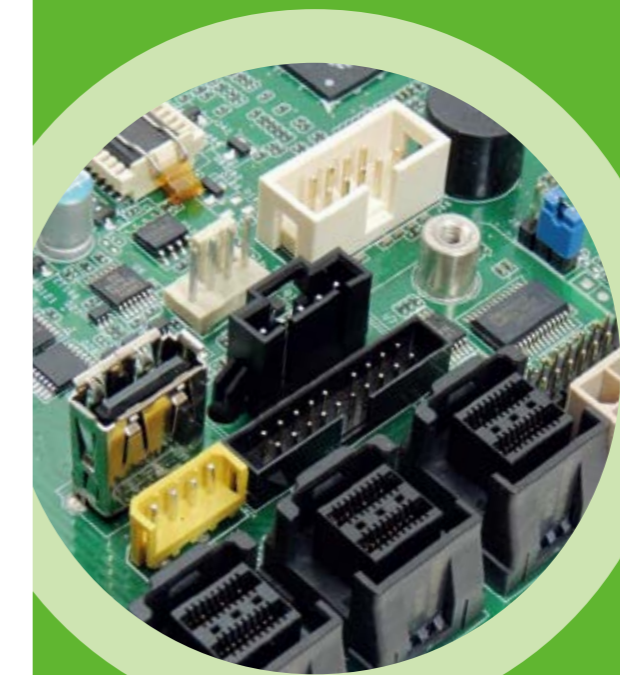
Pitch: 0.50mm; Mating Height: 7.65/10.0/14.0/15.0/18.0/19.0/20.0/25.0/30.0mm
 Pitch: 0.635mm; Mating Height: 6.3/10.0/15.0mm
 Pitch: 0.80mm; Mating Height: 8.0/9.0/11.75/12.75/20.95/24.7mm



About Greenconn

Established in 1998, Greenconn is a leading provider of connector solutions, offering highly reliable interconnect products and customized solutions with its vertically integrated supply chain advantages. Our main products cover automotive, floating, high-speed, IDC, I/O and other board-to-board/wire-to-board connectors, widely used in industrial, automotive, telecommunication, medical and consumer electronics.

At Greenconn, quality is of the essence. From product design and development, tooling manufacturing, terminal stamping, surface plating, and injection molding, to assembly automation and packaging, we provide customers with one-stop production services and strictly adhere to international standards such as ISO 9001, IATF 16949, VDA 6.3, and other quality requirements to ensure product quality.

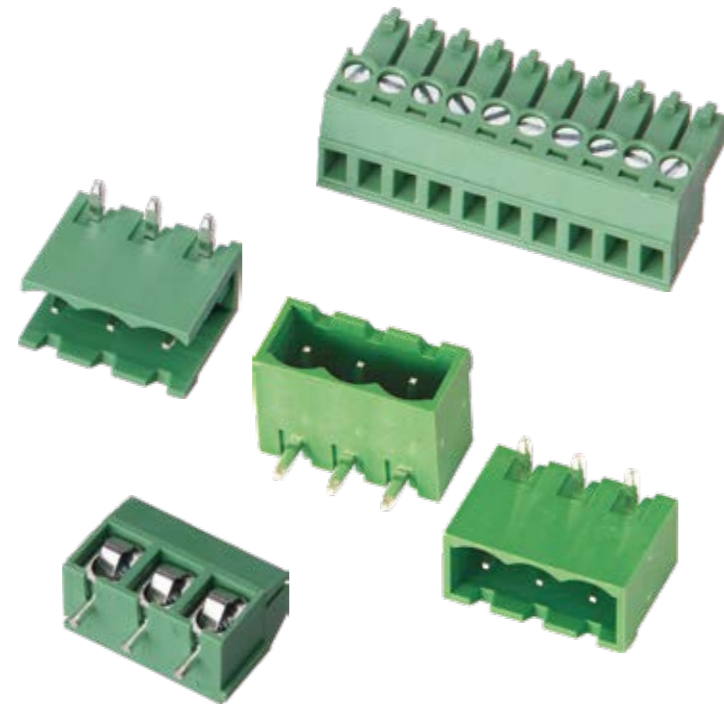


Automotive Connectors
 Board-to-Board Connectors
 Floating Connectors
 High-Speed Connectors
 I/O Connectors
 Wire-to-Board Connectors



Pitch(mm): 0.50, 1.25, 1.50, 2.00, 2.50, 2.54, 3.96, 4.20

FPC/FFC



Terminal Blocks



- **Factory**
 Ganzhou · China
 Ha Noi · Vietnam
- **Sales & Service**
 New Taipei City · Taiwan
 Kunshan · China
 Shenzhen · China
- **Direct Sales Office**
 Osaka · Japan
 Nanjing · China
 Wuhan · China
 Chongqing · China
 Toronto · Canada
 Houston · USA



www.greenconn.com
sales@greenconn.com

China
 TEL +86-755-2321 9802
 FAX +86-755-2308 0709

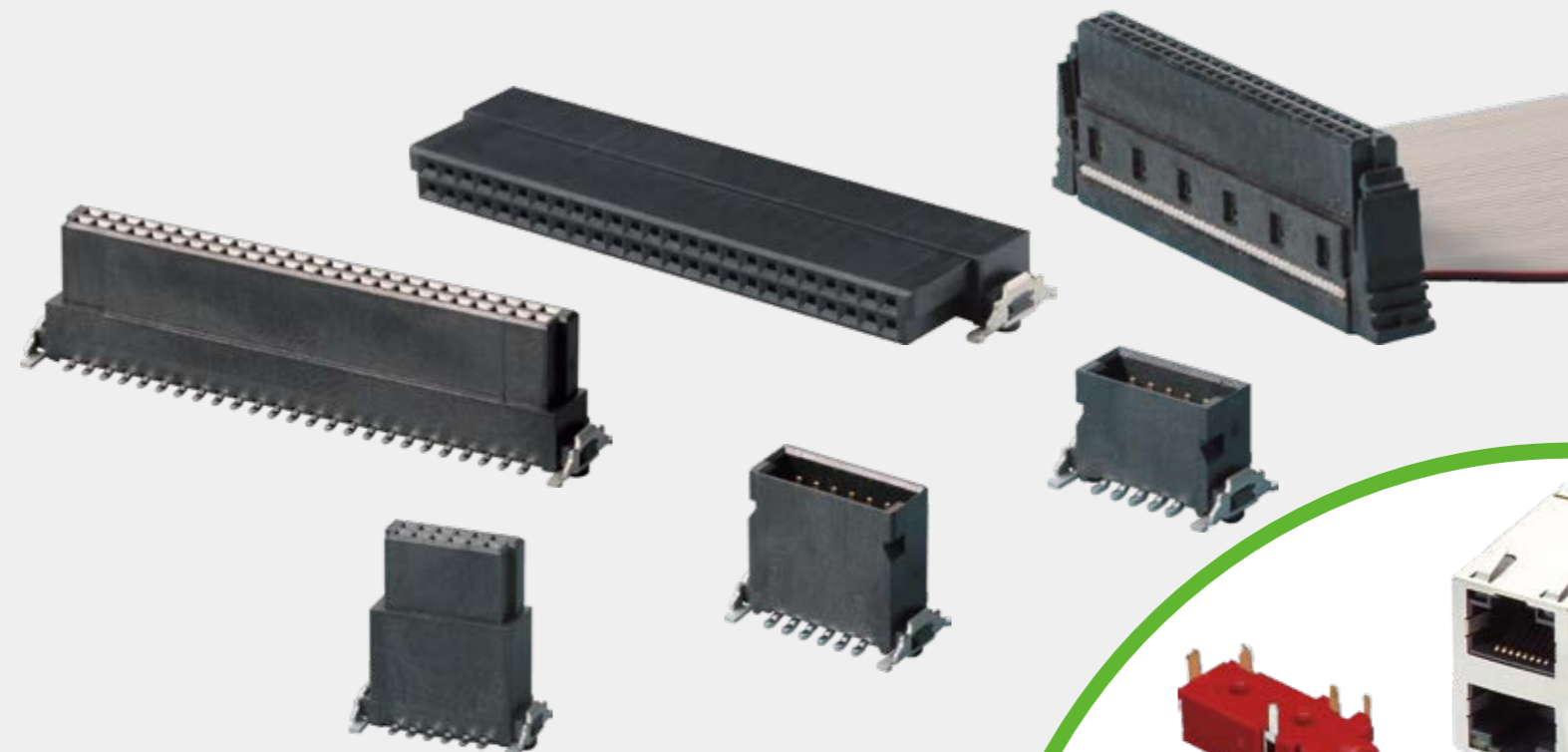
Taiwan
 TEL +886 -2 -2209 1343
 FAX +886 -2 -2903 0754

Automotive Connectors



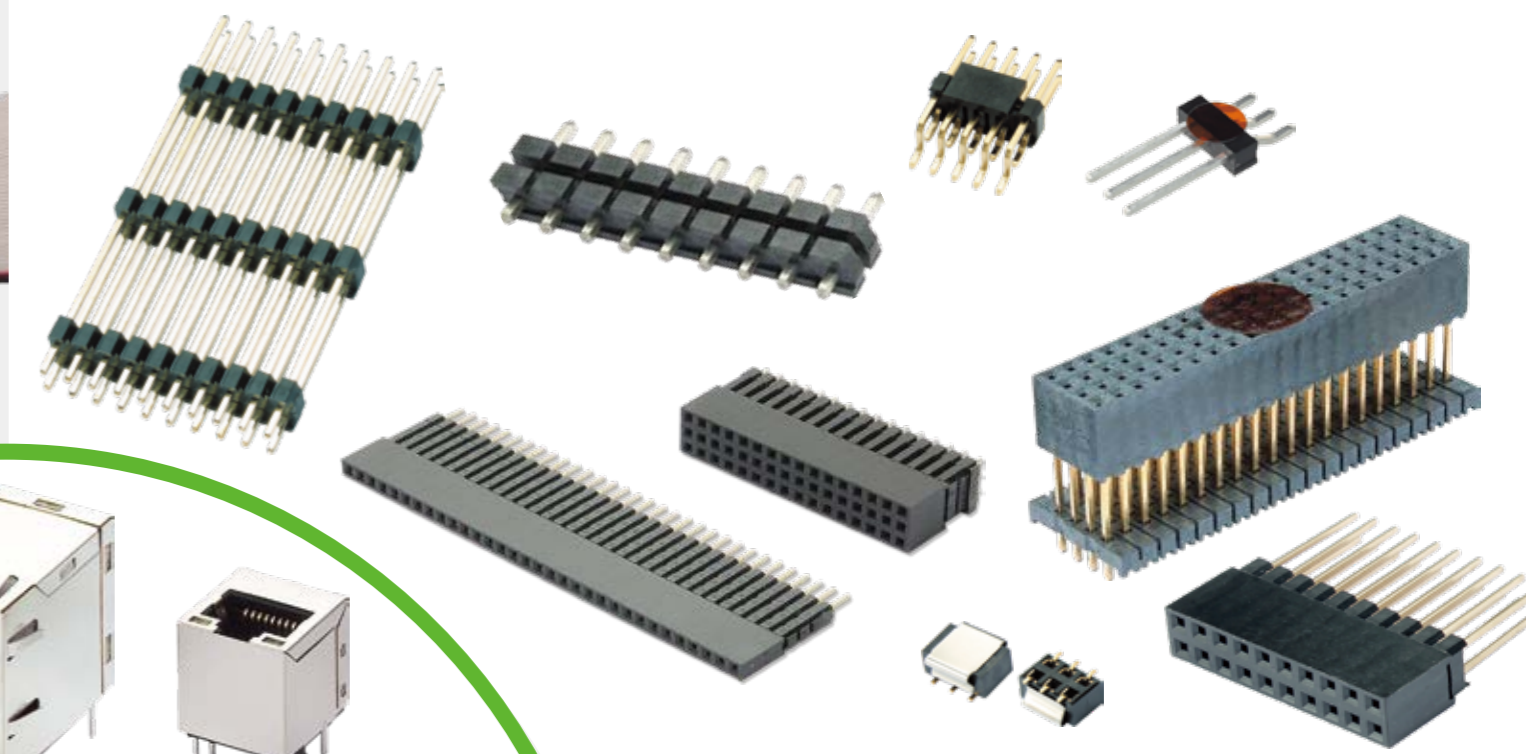
High-Speed Connectors

Pitch: 1.27mm; Mating Height: 8.0-20.2mm



Pin Headers / Female Headers

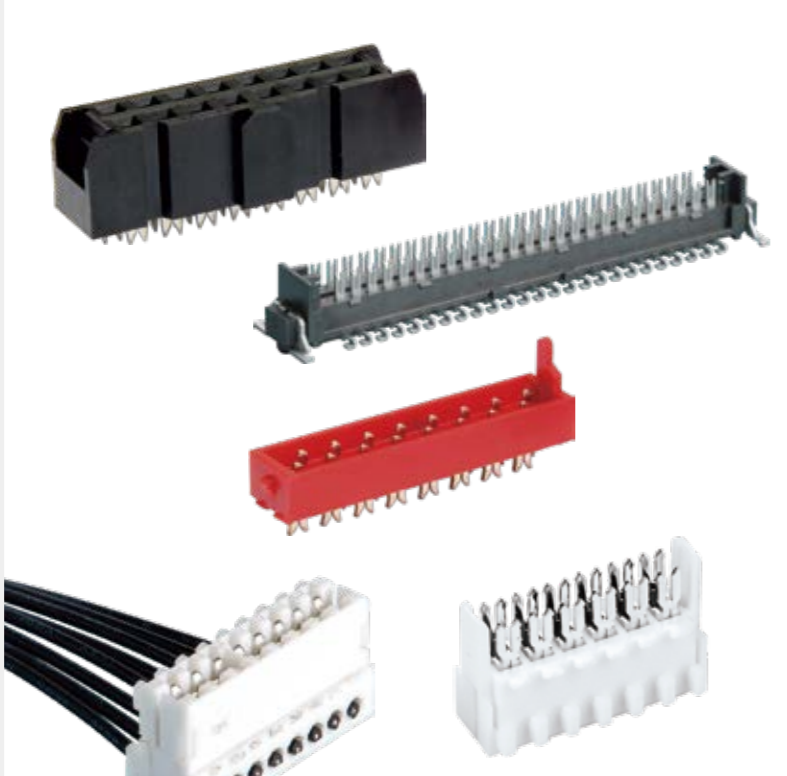
Pitch(mm): 0.80, 1.00, 1.27, 2.00, 2.54, 3.96, 5.08



I/O Connectors



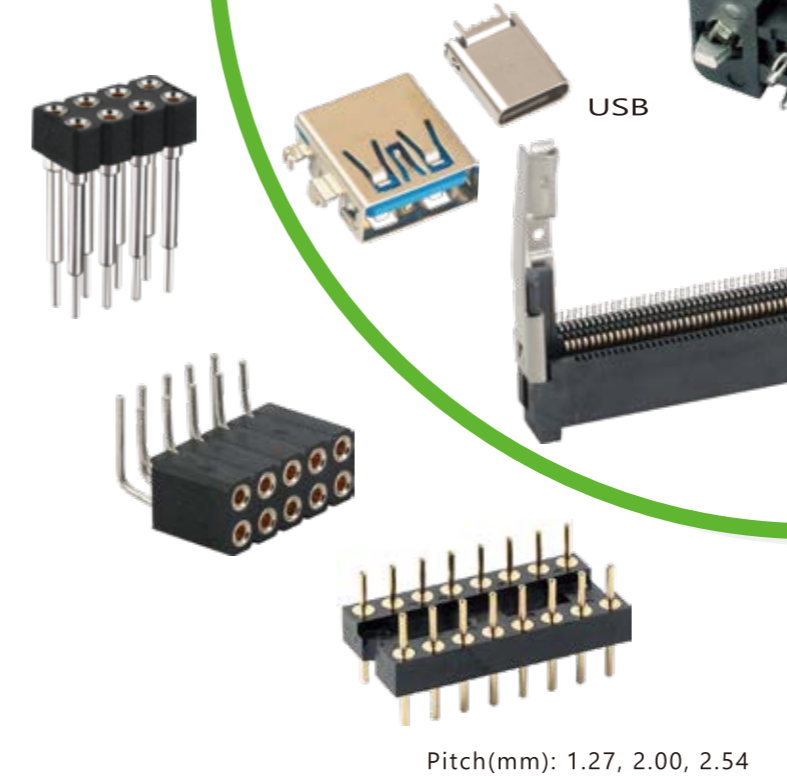
Wafer



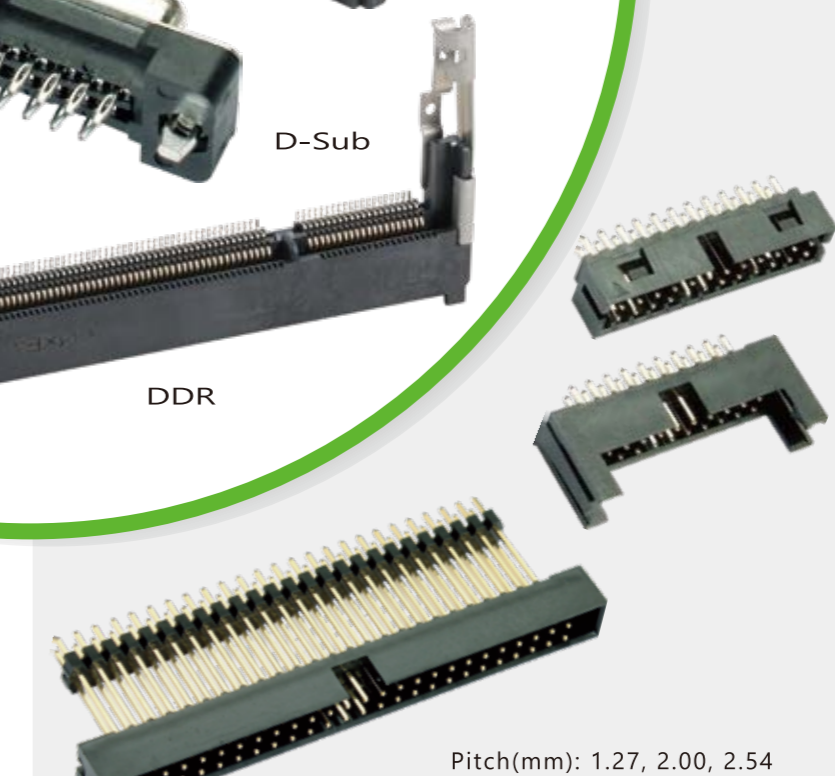
IDC



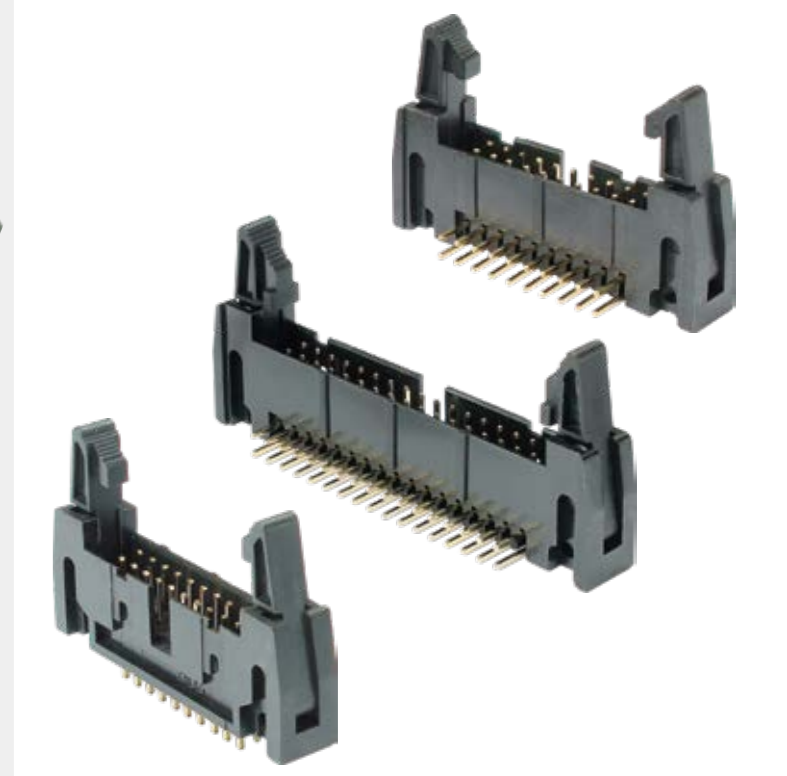
PCI



Machined Pin Headers



Box Headers



Ejector Headers