



SET580X SERIES -

High Current SMD Power Inductors

New Products



RoHS Compliant

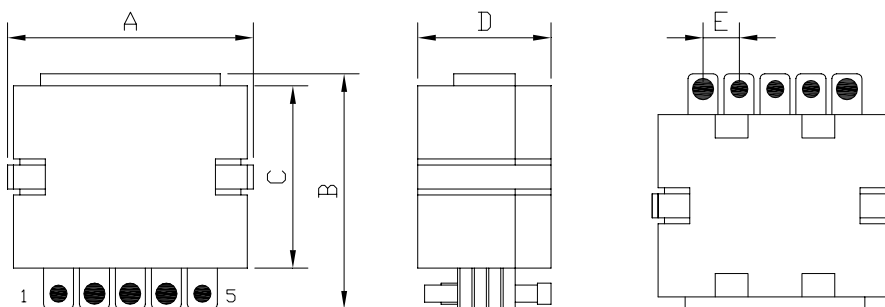
SET	5804	—	2R4L	—	LF
TYPE	DIMENSIONS		INDUCTANCE		LEAD FREE

FEATURES

- Designed for high current , high volt*time applications .
- Lowest DCR with high efficiency
- Shielded construction
- Lead Free with RoHS compliant .

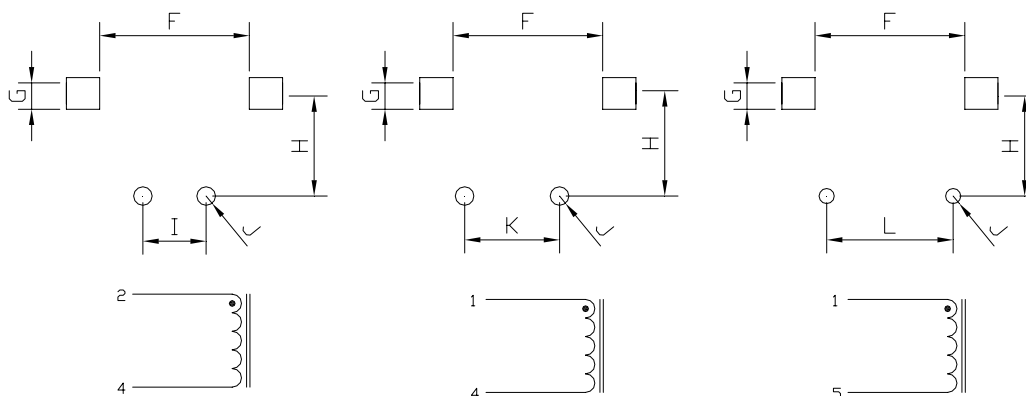
SHAPES AND DIMENSIONS

UNIT : mm



A=20.5 Max. B=19.6 Max. C=15.2 Max. D=7.37 Max. E=3.18±0.15

RECOMMENDED PATTERNS



F=14.35 Ref. G=3.18 Ref. H=9.91 Ref. I=6.35 Ref. J=2.79 Ref. K=9.53 Ref. L=12.7 Ref.



SET580X SERIES –

High Current SMD Power Inductors



RoHS Compliant

SPECIFICATION TABLE

PART NUMBER	INDUCTANCE (μ H) @ 0A	Isat(A) Δ L/L0A=15% (Typ.)	Isat(A) (Max.)	DCR (m Ω) (Max.)	Turns (Ts)
2 TURNS (Low Loss) SERIES					
SET5801-R45L-LF	0.45 \pm 15%	0.45	73	0.48	2 Turns Low Loss
SET5801-R65L-LF	0.65 \pm 15%	0.63	54	0.48	2 Turns Low Loss
SET5801-R91L-LF	0.91 \pm 15%	0.85	39	0.48	2 Turns Low Loss
SET5801-1R1L-LF	1.10 \pm 15%	1.05	30	0.48	2 Turns Low Loss
SET5801-1R3L-LF	1.30 \pm 15%	1.25	25	0.48	2 Turns Low Loss
SET5801-1R5L-LF	1.50 \pm 15%	1.45	21	0.48	2 Turns Low Loss
2 TURNS SERIES					
SET5802-R45L-LF	0.45 \pm 15%	0.45	52	0.98	2 Turns
SET5802-R65L-LF	0.65 \pm 15%	0.63	52	0.98	2 Turns
SET5802-R91L-LF	0.91 \pm 15%	0.85	39	0.98	2 Turns
SET5802-1R1L-LF	1.10 \pm 15%	1.05	30	0.98	2 Turns
SET5802-1R3L-LF	1.30 \pm 15%	1.25	25	0.98	2 Turns
SET5802-1R5L-LF	1.50 \pm 15%	1.45	21	0.98	2 Turns
3 TURNS SERIES					
SET5803-1R0L-LF	1.00 \pm 15%	0.95	42	1.43	3 Turns
SET5803-1R5L-LF	1.50 \pm 15%	1.40	36	1.43	3 Turns
SET5803-2R0L-LF	2.00 \pm 15%	1.90	25	1.43	3 Turns
SET5803-2R5L-LF	2.50 \pm 15%	2.40	20	1.43	3 Turns
SET5803-3R0L-LF	3.00 \pm 15%	2.80	15	1.43	3 Turns
SET5803-3R5L-LF	3.50 \pm 15%	3.40	12	1.43	3 Turns
4TURNS SERIES					
SET5804-1R6L-LF	1.60 \pm 15%	1.60	37	1.80	4 Turns
SET5804-2R4L-LF	2.42 \pm 15%	2.40	30	1.80	4 Turns
SET5804-3R6L-LF	3.60 \pm 15%	3.30	17	1.80	4 Turns
SET5804-4R4L-LF	4.40 \pm 15%	4.00	14	1.80	4 Turns
SET5804-5R3L-LF	5.34 \pm 15%	4.90	11	1.80	4 Turns
SET5804-6R2L-LF	6.20 \pm 15%	5.80	9	1.80	4 Turns

- Inductance tested at 100KHz/0.1Vrms .
- I sat : DC current at which the inductance drops 15% (typ) from its value without current.
- I rms : Average current for a 45°C temperature rise above 25°C ambient.
- Operating temperature range -40°C to +130°C , Electrical specifications at 25°C.



SET580X SERIES -

High Current SMD Power Inductors

New Products



RoHS Compliant

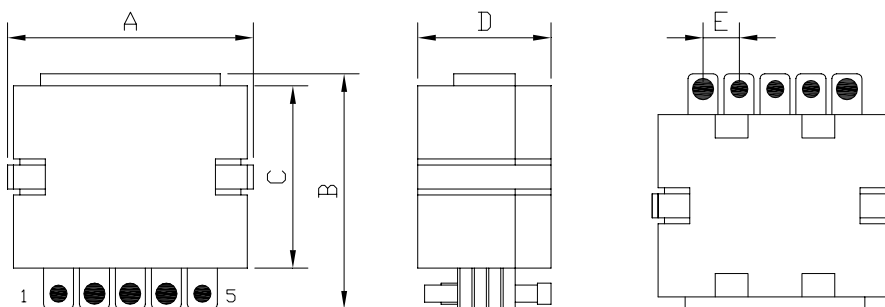
SET	5804	—	2R4L	—	LF
TYPE	DIMENSIONS		INDUCTANCE		LEAD FREE

FEATURES

- Designed for high current , high volt*time applications .
- Lowest DCR with high efficiency
- Shielded construction
- Lead Free with RoHS compliant .

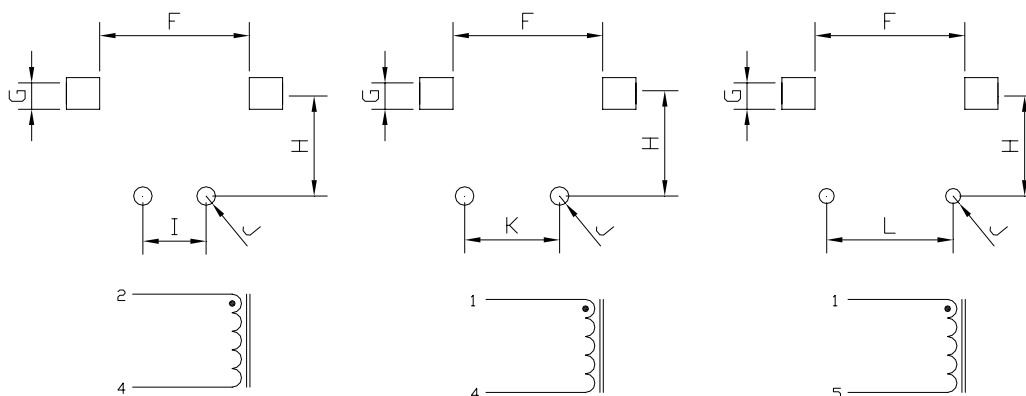
SHAPES AND DIMENSIONS

UNIT : mm



A=20.5 Max. B=19.6 Max. C=15.2 Max. D=7.37 Max. E=3.18±0.15

RECOMMENDED PATTERNS



F=14.35 Ref. G=3.18 Ref. H=9.91 Ref. I=6.35 Ref. J=2.79 Ref. K=9.53 Ref. L=12.7 Ref.



SET580X SERIES –

High Current SMD Power Inductors



RoHS Compliant

SPECIFICATION TABLE

PART NUMBER	INDUCTANCE (μ H) @ 0A	Isat(A) Δ L/L0A=15% (Typ.)	Isat(A) (Max.)	DCR (m Ω) (Max.)	Turns (Ts)
2 TURNS (Low Loss) SERIES					
SET5801-R45L-LF	0.45 \pm 15%	0.45	73	0.48	2 Turns Low Loss
SET5801-R65L-LF	0.65 \pm 15%	0.63	54	0.48	2 Turns Low Loss
SET5801-R91L-LF	0.91 \pm 15%	0.85	39	0.48	2 Turns Low Loss
SET5801-1R1L-LF	1.10 \pm 15%	1.05	30	0.48	2 Turns Low Loss
SET5801-1R3L-LF	1.30 \pm 15%	1.25	25	0.48	2 Turns Low Loss
SET5801-1R5L-LF	1.50 \pm 15%	1.45	21	0.48	2 Turns Low Loss
2 TURNS SERIES					
SET5802-R45L-LF	0.45 \pm 15%	0.45	52	0.98	2 Turns
SET5802-R65L-LF	0.65 \pm 15%	0.63	52	0.98	2 Turns
SET5802-R91L-LF	0.91 \pm 15%	0.85	39	0.98	2 Turns
SET5802-1R1L-LF	1.10 \pm 15%	1.05	30	0.98	2 Turns
SET5802-1R3L-LF	1.30 \pm 15%	1.25	25	0.98	2 Turns
SET5802-1R5L-LF	1.50 \pm 15%	1.45	21	0.98	2 Turns
3 TURNS SERIES					
SET5803-1R0L-LF	1.00 \pm 15%	0.95	42	1.43	3 Turns
SET5803-1R5L-LF	1.50 \pm 15%	1.40	36	1.43	3 Turns
SET5803-2R0L-LF	2.00 \pm 15%	1.90	25	1.43	3 Turns
SET5803-2R5L-LF	2.50 \pm 15%	2.40	20	1.43	3 Turns
SET5803-3R0L-LF	3.00 \pm 15%	2.80	15	1.43	3 Turns
SET5803-3R5L-LF	3.50 \pm 15%	3.40	12	1.43	3 Turns
4TURNS SERIES					
SET5804-1R6L-LF	1.60 \pm 15%	1.60	37	1.80	4 Turns
SET5804-2R4L-LF	2.42 \pm 15%	2.40	30	1.80	4 Turns
SET5804-3R6L-LF	3.60 \pm 15%	3.30	17	1.80	4 Turns
SET5804-4R4L-LF	4.40 \pm 15%	4.00	14	1.80	4 Turns
SET5804-5R3L-LF	5.34 \pm 15%	4.90	11	1.80	4 Turns
SET5804-6R2L-LF	6.20 \pm 15%	5.80	9	1.80	4 Turns

- Inductance tested at 100KHz/0.1Vrms .
- I sat : DC current at which the inductance drops 15% (typ) from its value without current.
- I rms : Average current for a 45°C temperature rise above 25°C ambient.
- Operating temperature range -40°C to +130°C , Electrical specifications at 25°C.



SET580X SERIES -

High Current SMD Power Inductors

New Products



RoHS Compliant

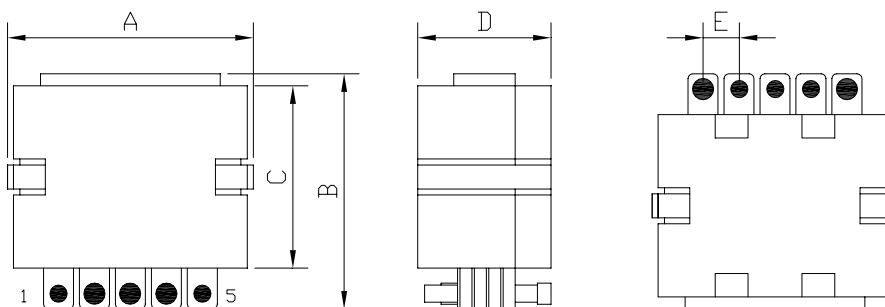
SET	5804	—	2R4L	—	LF
TYPE	DIMENSIONS		INDUCTANCE		LEAD FREE

FEATURES

- Designed for high current , high volt*time applications .
- Lowest DCR with high efficiency
- Shielded construction
- Lead Free with RoHS compliant .

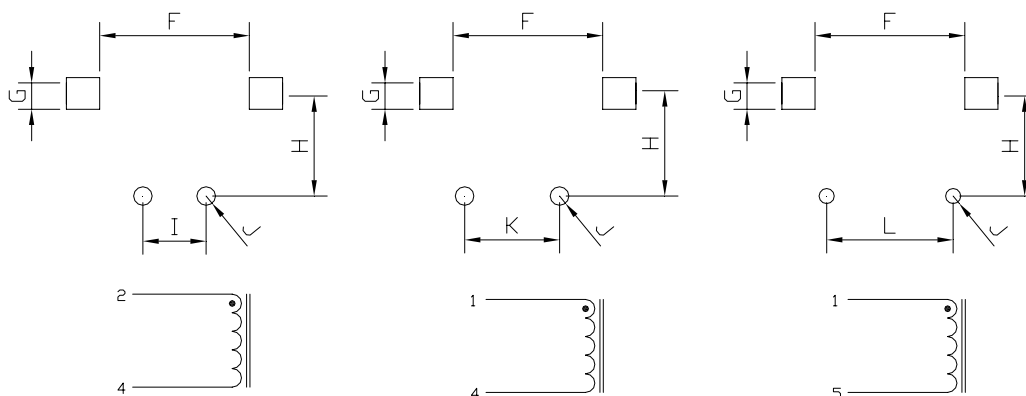
SHAPES AND DIMENSIONS

UNIT : mm



A=20.5 Max. B=19.6 Max. C=15.2 Max. D=7.37 Max. E=3.18±0.15

RECOMMENDED PATTERNS



F=14.35 Ref. G=3.18 Ref. H=9.91 Ref. I=6.35 Ref. J=2.79 Ref. K=9.53 Ref. L=12.7 Ref.



SET580X SERIES –

High Current SMD Power Inductors



RoHS Compliant

SPECIFICATION TABLE

PART NUMBER	INDUCTANCE (μ H) @ 0A	Isat(A) Δ L/L0A=15% (Typ.)	Isat(A) (Max.)	DCR (m Ω) (Max.)	Turns (Ts)
2 TURNS (Low Loss) SERIES					
SET5801-R45L-LF	0.45 \pm 15%	0.45	73	0.48	2 Turns Low Loss
SET5801-R65L-LF	0.65 \pm 15%	0.63	54	0.48	2 Turns Low Loss
SET5801-R91L-LF	0.91 \pm 15%	0.85	39	0.48	2 Turns Low Loss
SET5801-1R1L-LF	1.10 \pm 15%	1.05	30	0.48	2 Turns Low Loss
SET5801-1R3L-LF	1.30 \pm 15%	1.25	25	0.48	2 Turns Low Loss
SET5801-1R5L-LF	1.50 \pm 15%	1.45	21	0.48	2 Turns Low Loss
2 TURNS SERIES					
SET5802-R45L-LF	0.45 \pm 15%	0.45	52	0.98	2 Turns
SET5802-R65L-LF	0.65 \pm 15%	0.63	52	0.98	2 Turns
SET5802-R91L-LF	0.91 \pm 15%	0.85	39	0.98	2 Turns
SET5802-1R1L-LF	1.10 \pm 15%	1.05	30	0.98	2 Turns
SET5802-1R3L-LF	1.30 \pm 15%	1.25	25	0.98	2 Turns
SET5802-1R5L-LF	1.50 \pm 15%	1.45	21	0.98	2 Turns
3 TURNS SERIES					
SET5803-1R0L-LF	1.00 \pm 15%	0.95	42	1.43	3 Turns
SET5803-1R5L-LF	1.50 \pm 15%	1.40	36	1.43	3 Turns
SET5803-2R0L-LF	2.00 \pm 15%	1.90	25	1.43	3 Turns
SET5803-2R5L-LF	2.50 \pm 15%	2.40	20	1.43	3 Turns
SET5803-3R0L-LF	3.00 \pm 15%	2.80	15	1.43	3 Turns
SET5803-3R5L-LF	3.50 \pm 15%	3.40	12	1.43	3 Turns
4TURNS SERIES					
SET5804-1R6L-LF	1.60 \pm 15%	1.60	37	1.80	4 Turns
SET5804-2R4L-LF	2.42 \pm 15%	2.40	30	1.80	4 Turns
SET5804-3R6L-LF	3.60 \pm 15%	3.30	17	1.80	4 Turns
SET5804-4R4L-LF	4.40 \pm 15%	4.00	14	1.80	4 Turns
SET5804-5R3L-LF	5.34 \pm 15%	4.90	11	1.80	4 Turns
SET5804-6R2L-LF	6.20 \pm 15%	5.80	9	1.80	4 Turns

- Inductance tested at 100KHz/0.1Vrms .
- I sat : DC current at which the inductance drops 15% (typ) from its value without current.
- I rms : Average current for a 45°C temperature rise above 25°C ambient.
- Operating temperature range -40°C to +130°C , Electrical specifications at 25°C.



SET580X SERIES -

High Current SMD Power Inductors

New Products



RoHS Compliant

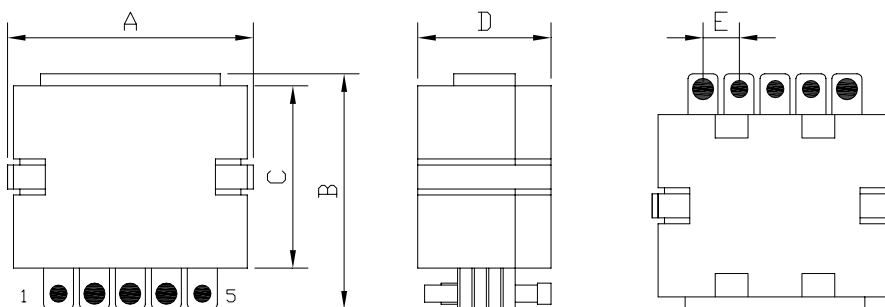
SET	5804	—	2R4L	—	LF
TYPE	DIMENSIONS		INDUCTANCE		LEAD FREE

FEATURES

- Designed for high current , high volt*time applications .
- Lowest DCR with high efficiency
- Shielded construction
- Lead Free with RoHS compliant .

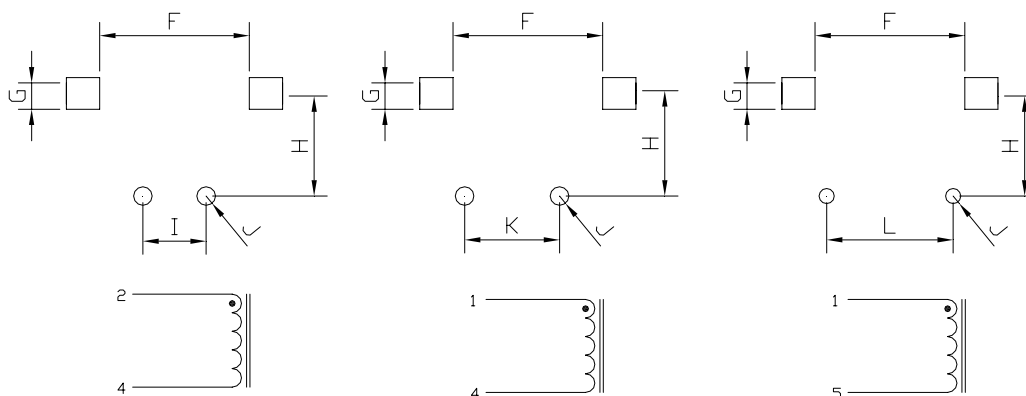
SHAPES AND DIMENSIONS

UNIT : mm



A=20.5 Max. B=19.6 Max. C=15.2 Max. D=7.37 Max. E=3.18±0.15

RECOMMENDED PATTERNS



F=14.35 Ref. G=3.18 Ref. H=9.91 Ref. I=6.35 Ref. J=2.79 Ref. K=9.53 Ref. L=12.7 Ref.



SET580X SERIES –

High Current SMD Power Inductors



RoHS Compliant

SPECIFICATION TABLE

PART NUMBER	INDUCTANCE (μ H) @ 0A	Isat(A) Δ L/L0A=15% (Typ.)	Isat(A) (Max.)	DCR (m Ω) (Max.)	Turns (Ts)
2 TURNS (Low Loss) SERIES					
SET5801-R45L-LF	0.45 \pm 15%	0.45	73	0.48	2 Turns Low Loss
SET5801-R65L-LF	0.65 \pm 15%	0.63	54	0.48	2 Turns Low Loss
SET5801-R91L-LF	0.91 \pm 15%	0.85	39	0.48	2 Turns Low Loss
SET5801-1R1L-LF	1.10 \pm 15%	1.05	30	0.48	2 Turns Low Loss
SET5801-1R3L-LF	1.30 \pm 15%	1.25	25	0.48	2 Turns Low Loss
SET5801-1R5L-LF	1.50 \pm 15%	1.45	21	0.48	2 Turns Low Loss
2 TURNS SERIES					
SET5802-R45L-LF	0.45 \pm 15%	0.45	52	0.98	2 Turns
SET5802-R65L-LF	0.65 \pm 15%	0.63	52	0.98	2 Turns
SET5802-R91L-LF	0.91 \pm 15%	0.85	39	0.98	2 Turns
SET5802-1R1L-LF	1.10 \pm 15%	1.05	30	0.98	2 Turns
SET5802-1R3L-LF	1.30 \pm 15%	1.25	25	0.98	2 Turns
SET5802-1R5L-LF	1.50 \pm 15%	1.45	21	0.98	2 Turns
3 TURNS SERIES					
SET5803-1R0L-LF	1.00 \pm 15%	0.95	42	1.43	3 Turns
SET5803-1R5L-LF	1.50 \pm 15%	1.40	36	1.43	3 Turns
SET5803-2R0L-LF	2.00 \pm 15%	1.90	25	1.43	3 Turns
SET5803-2R5L-LF	2.50 \pm 15%	2.40	20	1.43	3 Turns
SET5803-3R0L-LF	3.00 \pm 15%	2.80	15	1.43	3 Turns
SET5803-3R5L-LF	3.50 \pm 15%	3.40	12	1.43	3 Turns
4TURNS SERIES					
SET5804-1R6L-LF	1.60 \pm 15%	1.60	37	1.80	4 Turns
SET5804-2R4L-LF	2.42 \pm 15%	2.40	30	1.80	4 Turns
SET5804-3R6L-LF	3.60 \pm 15%	3.30	17	1.80	4 Turns
SET5804-4R4L-LF	4.40 \pm 15%	4.00	14	1.80	4 Turns
SET5804-5R3L-LF	5.34 \pm 15%	4.90	11	1.80	4 Turns
SET5804-6R2L-LF	6.20 \pm 15%	5.80	9	1.80	4 Turns

- Inductance tested at 100KHz/0.1Vrms .
- I sat : DC current at which the inductance drops 15% (typ) from its value without current.
- I rms : Average current for a 45°C temperature rise above 25°C ambient.
- Operating temperature range -40°C to +130°C , Electrical specifications at 25°C.



SER2818 SERIES~ High Current SMD Power Inductors



PART NUMBERING SYSTEM

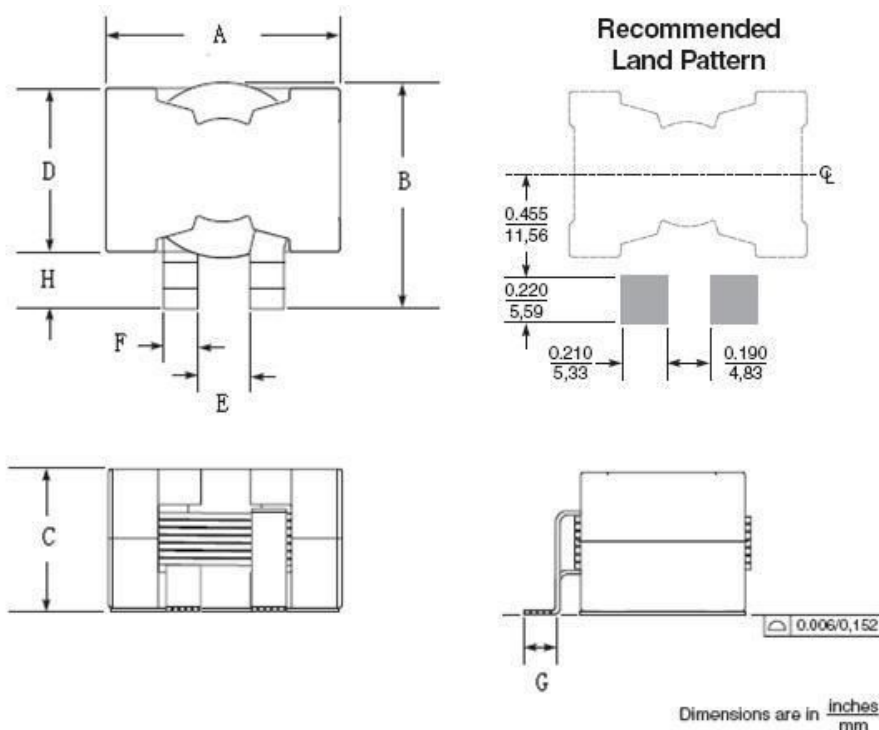
SER	2918	—	100M	—	LF
TYPE	DIMENSIONS		INDUCTANCE		LEAD FREE

FEATURES :

- Designed for high current, low voltage power supplies .
- Saturation current ratings over 100 Amps .
- Flat wire windings provide exceptionally low DC resistance .
- Halogen Free , 100% lead (Pb) Free and RoHS compliant .

SHAPES AND DIMENSIONS :

UNIT : mm



A=27.90 Max. B=27.94 Max. C=17.78 Max. D=19.3 Max.
E=6.62±0.51 F 3.80±0.2 G=3.8 Min. H=6.90Typ.



SER2818 SERIES~ High Current SMD Power Inductors



SPECIFICATION TABLE

PART NUMBER	INDUCTANCE (μ H)	DCR (m Ω) (Max.)	Isat (A) Drop 10%	Isat (A) Drop 20%	Isat (A) Drop 30%	Irms Rise 40 $^{\circ}$ C
SER2918-3R3M-LF	3.30 \pm 20%	2.86	91.0	92.5	93.6	28.0
SER2918-4R7M-LF	4.70 \pm 20%	2.86	59.0	61.2	62.4	28.0
SER2918-6R8M-LF	6.80 \pm 20%	2.86	42.0	45.0	45.9	28.0
SER2918-100M-LF	10.0 \pm 20%	2.86	28.0	31.2	32.1	28.0
SER2918-150M-LF	15.0 \pm 20%	2.86	18.0	21.2	21.9	28.0
SER2918-220M-LF	22.0 \pm 20%	2.86	12.0	14.0	15.0	28.0
SER2918-330M-LF	33.0 \pm 20%	2.86	7.00	8.70	9.60	28.0

- Inductance measured at 100KHz,0.1Vrms,0A_{dc} on WK3260 or equivalent
- DC current at which the inductance drop 10% , 20%, 30%(Typ) from its value without current.
- Irms current that causes a 20 $^{\circ}$ C & 40 $^{\circ}$ C temperature rise from 25 $^{\circ}$ C ambient..
- Operating temperature range -40 $^{\circ}$ C to +120 $^{\circ}$ C , Electrical specifications at 25 $^{\circ}$ C.



SER2815 SERIES~ High Current SMD Power Inductors



PART NUMBERING SYSTEM

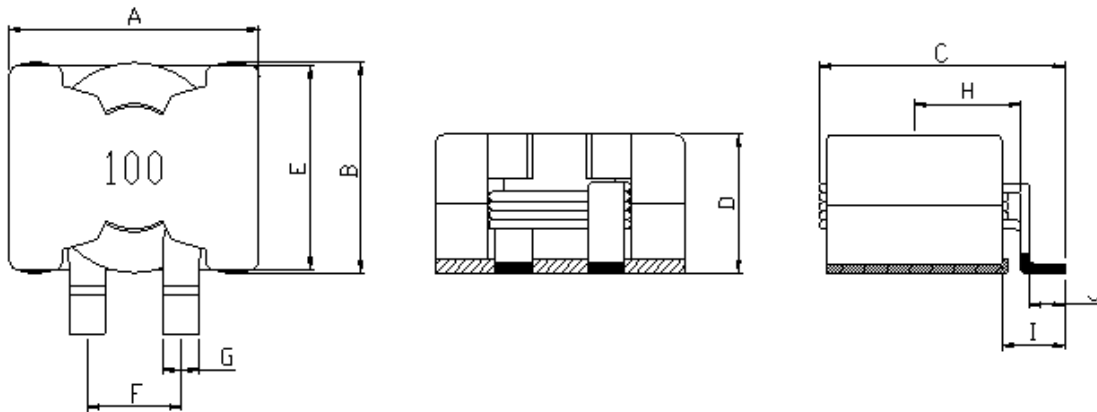
SER	2815	—	6R8K	—	LF
TYPE	DIMENSIONS		INDUCTANCE		LEAD FREE

FEATURES :

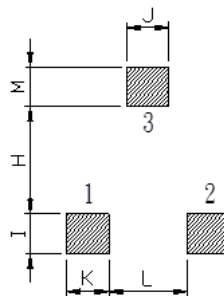
- Designed for high current, low voltage power supplies .
- Magnetic shielding structure, Excellent resistance to electromagnetic interference .
- Flat wire windings provide exceptionally low DC resistance , Halogen Free , 100% lead (Pb) Free and RoHS compliant .

SHAPES AND DIMENSIONS :

UNIT : mm



A=28.0 Max. B=20.5 Max. C=28.0 Max. D=15.4 Max. E=19.3 Max.
F 10.0±0.5 G=4.0±0.25 H=11.5 Ref. I=6.8±0.35 J=3.8±0.35



H =16.6 I=5.59 J=6.35 K=5.00 L=4.80 M=5.28



Coilmaster Electronics Co., Ltd.

9F-3 No.398, Huan Bei Rd. Chung Li City, Taoyuan 320, Taiwan
Tel : +886-3-422-8279 Fax : +886-3-422-8734

E-mail :info@coilmaster.com.tw

Web Site : www.coilmaster.com.tw

SER2815 SERIES~ High Current SMD Power Inductors



SPECIFICATION TABLE

PART NUMBER	INDUCTANCE (μ H)	DCR (m Ω) (Max.)	Isat (A) Drop 20%	Irms Rise 40 $^{\circ}$ C
SER2815-1R5M-LF	1.50 \pm 20%	1.62	100.0	30.0
SER2815-2R2M-LF	2.20 \pm 20%	1.62	84.0	30.0
SER2815-3R3K-LF	3.30 \pm 10%	1.62	54.0	30.0
SER2815-4R7K-LF	4.70 \pm 10%	1.62	36.9	30.0
SER2815-6R8K-LF	6.80 \pm 10%	1.62	26.0	30.0
SER2815-100K-LF	10.0 \pm 10%	1.62	16.2	30.0
SER2815-120K-LF	12.0 \pm 10%	1.62	12.5	30.0
SER2815-150K-LF	15.0 \pm 10%	1.62	9.80	30.0
SER2815-220K-LF	20.0 \pm 20%	1.62	6.00	30.0
SER2815-330K-LF	33.0 \pm 20%	1.62	3.30	30.0

- Inductance measured at 100KHz,0.1Vrms,0A_{dc} on WK3260 or equivalent
- DC current at which the inductance drop 20% (typ) from its value without current.
- Irms current that causes a 40 $^{\circ}$ C temperature rise from 25 $^{\circ}$ C ambient..
- Operating temperature range -40 $^{\circ}$ C to +120 $^{\circ}$ C , Electrical specifications at 25 $^{\circ}$ C .



SER2013 SERIES~ High Current SMD Power Inductors



PART NUMBERING SYSTEM

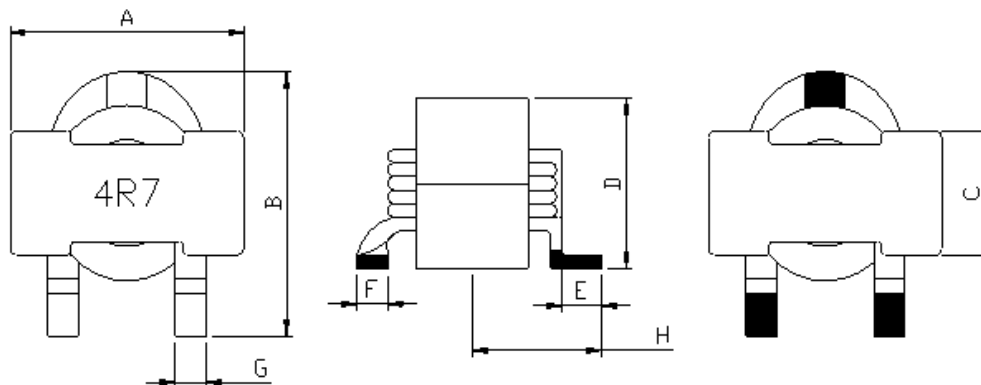
SER	2013	—	4R7K	—	LF
TYPE	DIMENSIONS		INDUCTANCE		LEAD FREE

FEATURES :

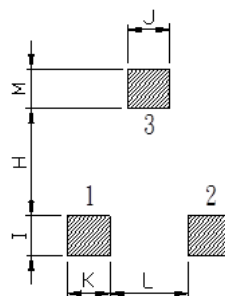
- Designed for high current, low voltage power supplies .
- Magnetic shielding structure, Excellent resistance to electromagnetic interference .
- Flat wire windings provide exceptionally low DC resistance , Halogen Free , 100% lead (Pb) Free and RoHS compliant .

SHAPES AND DIMENSIONS :

UNIT : mm



A=19.7 Max. B=19.6 Max. C=9.78 Max. D=12.9 Max. E=3.18±0.4
F =2.5 Ref. G=2.5±0.25 H=10.5±0.5





Coilmaster Electronics Co., Ltd.

9F-3 No.398, Huan Bei Rd. Chung Li City, Taoyuan 320, Taiwan
Tel : +886-3-422-8279 Fax : +886-3-422-8734

E-mail :info@coilmaster.com.tw

Web Site : www.coilmaster.com.tw

SER2013 SERIES~ High Current SMD Power Inductors



SPECIFICATION TABLE

PART NUMBER	INDUCTANCE (μ H)	DCR (m Ω) (Max.)	Isat (A) Drop 20%	Irms Rise 40 $^{\circ}$ C
SER2013-4R7K-LF	4.70 \pm 10%	1.80	18.0	30.0

- Inductance measured at 100KHz,0.1Vrms,0A_{dc} on WK3260 or equivalent
- DC current at which the inductance drop 20% (typ) from its value without current.
- Irms current that causes a 40 $^{\circ}$ C temperature rise from 25 $^{\circ}$ C ambient..
- Operating temperature range -40 $^{\circ}$ C to +120 $^{\circ}$ C , Electrical specifications at 25 $^{\circ}$ C .



SER2014 SERIES~ High Current SMD Power Inductors



PART NUMBERING SYSTEM

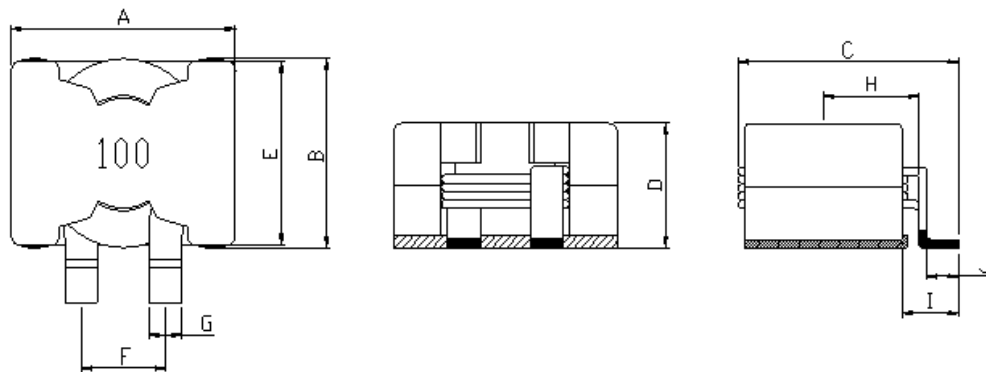
SER	2014	—	100K	—	LF
TYPE	DIMENSIONS		INDUCTANCE		LEAD FREE

FEATURES :

- Designed for high current, low voltage power supplies .
- Magnetic shielding structure, Excellent resistance to electromagnetic interference .
- Flat wire windings provide exceptionally low DC resistance , Halogen Free , 100% lead (Pb) Free and RoHS compliant .

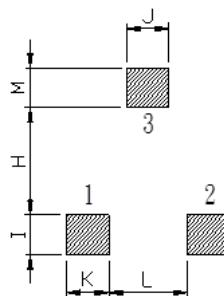
SHAPES AND DIMENSIONS :

UNIT : mm



A=21.8 Max. B=21.5 Max. C=14.5 Max. D=9.0±0.4

E=2.5±0.25 F = 2.0±0.15 G=3.0±0.3





Coilmaster Electronics Co., Ltd.

9F-3 No.398, Huan Bei Rd. Chung Li City, Taoyuan 320, Taiwan
Tel : +886-3-422-8279 Fax : +886-3-422-8734

E-mail :info@coilmaster.com.tw

Web Site : www.coilmaster.com.tw

SER2014 SERIES~ High Current SMD Power Inductors



SPECIFICATION TABLE

PART NUMBER	INDUCTANCE (μ H)	DCR (m Ω) (Max.)	Isat (A) Drop 30%	Irms Rise 40 $^{\circ}$ C
SER2014-100K-LF	10.0 \pm 10%	8.50	25.0	18.0
SER2014-220K-LF	22.0 \pm 10%	11.5	15.0	12.5

- Inductance measured at 100KHz,0.1Vrms,0Adc on WK3260 or equivalent
- DC current at which the inductance drop 30% (typ) from its value without current.
- Irms current that causes a 40 $^{\circ}$ C temperature rise from 25 $^{\circ}$ C ambient..
- Operating temperature range -40 $^{\circ}$ C to +120 $^{\circ}$ C , Electrical specifications at 25 $^{\circ}$ C.